

# DELUXE SERENITY SERIES SLIDING SHOWER DOOR SYSTEM

- Unique 180 Degree System With Rollers Above and Below the Header Bar
- System Features One Sliding Door and One Fixed Panel
- Use of Minimal Hardware Gives Door an Almost Floating Appearance
- Specially Designed Roller Bearings Allow Easy Opening and Closing of Door
- For 5/16" or 3/8" (8 or 10 mm) Thick Tempered Glass (Not Included)
- Choice of Durable Polished or Brushed Stainless Steel Finishes
- Fixed and Sliding Glass Panels are Reversible for Installation
- Accessory Kit Available for 90 Degree Return Panels

Our Deluxe Serenity Series Sliding Door System has an entirely different look from traditional sliding shower door systems. The use of minimal hardware provides a frameless look that gives the enclosure an almost floating appearance. Specially designed roller bearings allow for quiet, easy opening and closing of the door. This unique roller system operates above and below the header bar that spans the top of the enclosure. One sliding and one fixed panel make the 180 Degree Standard Kit beautiful and practical. The Kit includes all items pictured at bottom right of the page, with the exception of the 90 Degree Accessory Kit, which is purchased separately (see bottom left of page). The durable polished or brushed stainless steel units will work with 5/16" or 3/8" (8 or 10 mm) thick tempered glass (not included).



**"Most Innovative Bath Enclosure Product"**

## SPECIFICATIONS:

**Glass Thickness Range:** 5/16" to 3/8" (8 to 10 mm) Tempered Safety Glass (Not Included)

**Material:** Stainless Steel

**Maximum Door Size:** Do Not Exceed Either 30" (762 mm) Wide or 88 Pounds (40 kg)

**Fabrication:** Holes Required in Both Door and Fixed Panel (see [crlaurence.com](http://crlaurence.com) for details)

## Available Finishes

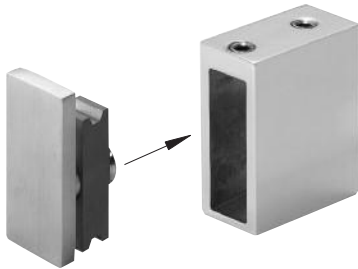


**glass magazine award winner**



## CAT. NO. SER90

Accessory Kit for 90 Degree Return is used in conjunction with Track Holder Fitting for Wall (sold separately, see right)

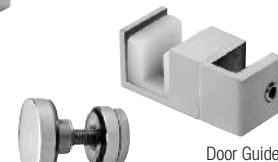
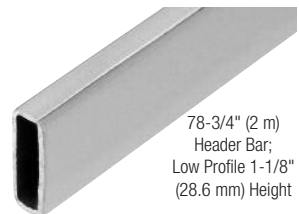


## CAT. NO. SERAHW2

Track Holder Fitting for Wall is used in conjunction with 90 Degree Accessory Kit (sold separately, see left)

## STANDARD 180 DEGREE KIT INCLUDES:

- One - 78-3/4" (2 m) Length Header Bar
- Four - Rollers
- One - Stopper
- Two - Track Holder Fittings for Wall
- Two - Track Holder Fittings for Fixed Panel
- One - Thru-Glass Pull
- One - Door Guide
- One - 85" (2.16 m) Clear L-Jamb



BRUSHED STAINLESS CAT. NO.	POLISHED STAINLESS CAT. NO.	DESCRIPTION
SER78BS	SER78PS	Standard 180 Degree Kit
SER90BS	SER90PS	90 Degree Accessory Kit
SERH2BS	SERH2PS	78-3/4" (2 m) Replacement Header Bar Only
SERNR1BS	SERNR1PS	Replacement Roller (1/Pack)
SERNS1BS	SERNS1PS	Replacement Stopper (1/Pack)
SERAHW2BS	SERAHW2PS	Replacement Track Holder Fittings For Wall (2/Pack)
SERFP2BS	SERFP2PS	Replacement Track Holder Fittings For Fixed Panel (2/Pack)
SERNG2BS	SERNG2PS	Replacement Door Guide (1/Pack)
SERNHP2BS	SERNHP2PS	Replacement Thru-Glass Pull
DK98L	DK98L	98" (2.49 m) Replacement Clear Plastic L-Seal

Minimum order: 1 each.



## C.R. LAURENCE COMPANY

Worldwide Manufacturer and Supplier  
Glazing, Architectural, Railing, Construction, Industrial, and Automotive Supplies

Phone: (800) 421-6144 Ext. 7740 | Fax: (800) 458-7496 | Email: [showers@crlaurence.com](mailto:showers@crlaurence.com)

[crlaurence.com](http://crlaurence.com)  
[usalum.com](http://usalum.com)  
[crl-arch.com](http://crl-arch.com)