



WINDOW WALLS

SERIES TN 451 TOP NOTCH SYSTEM  
PUNCHED WINDOW

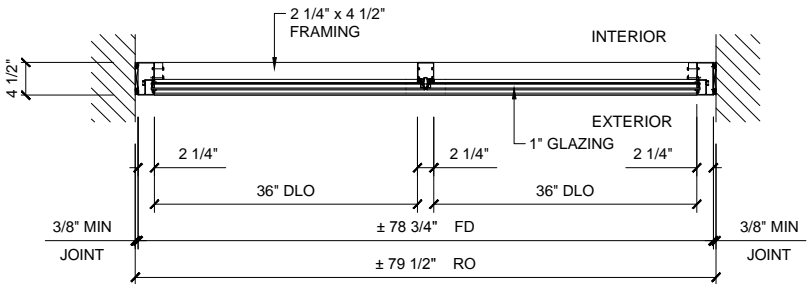
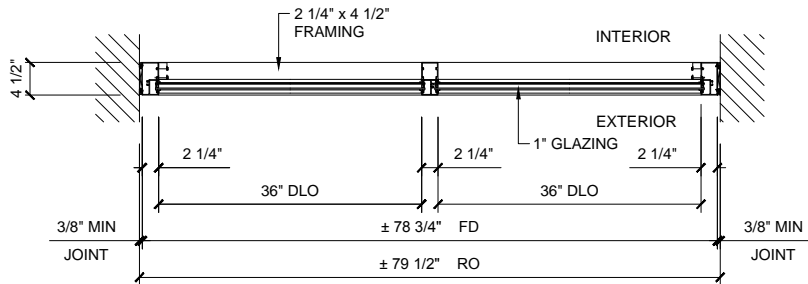
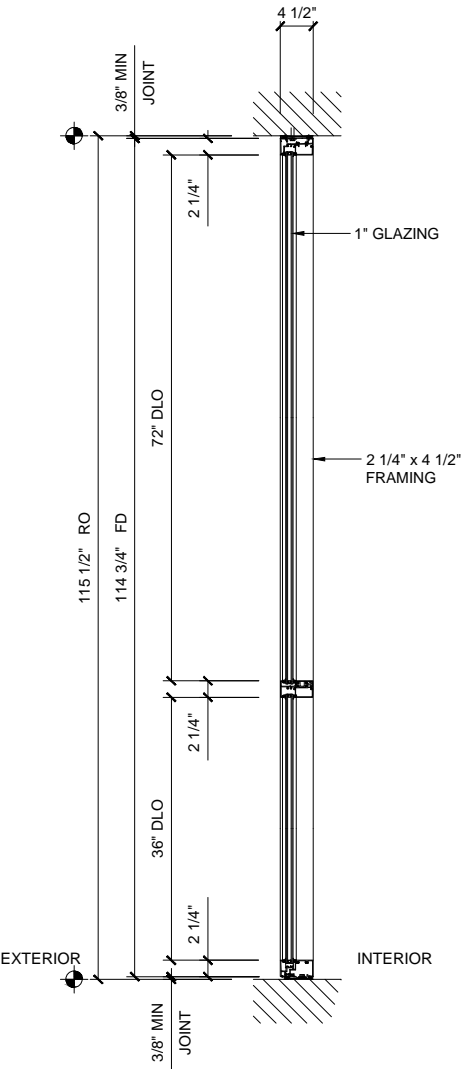
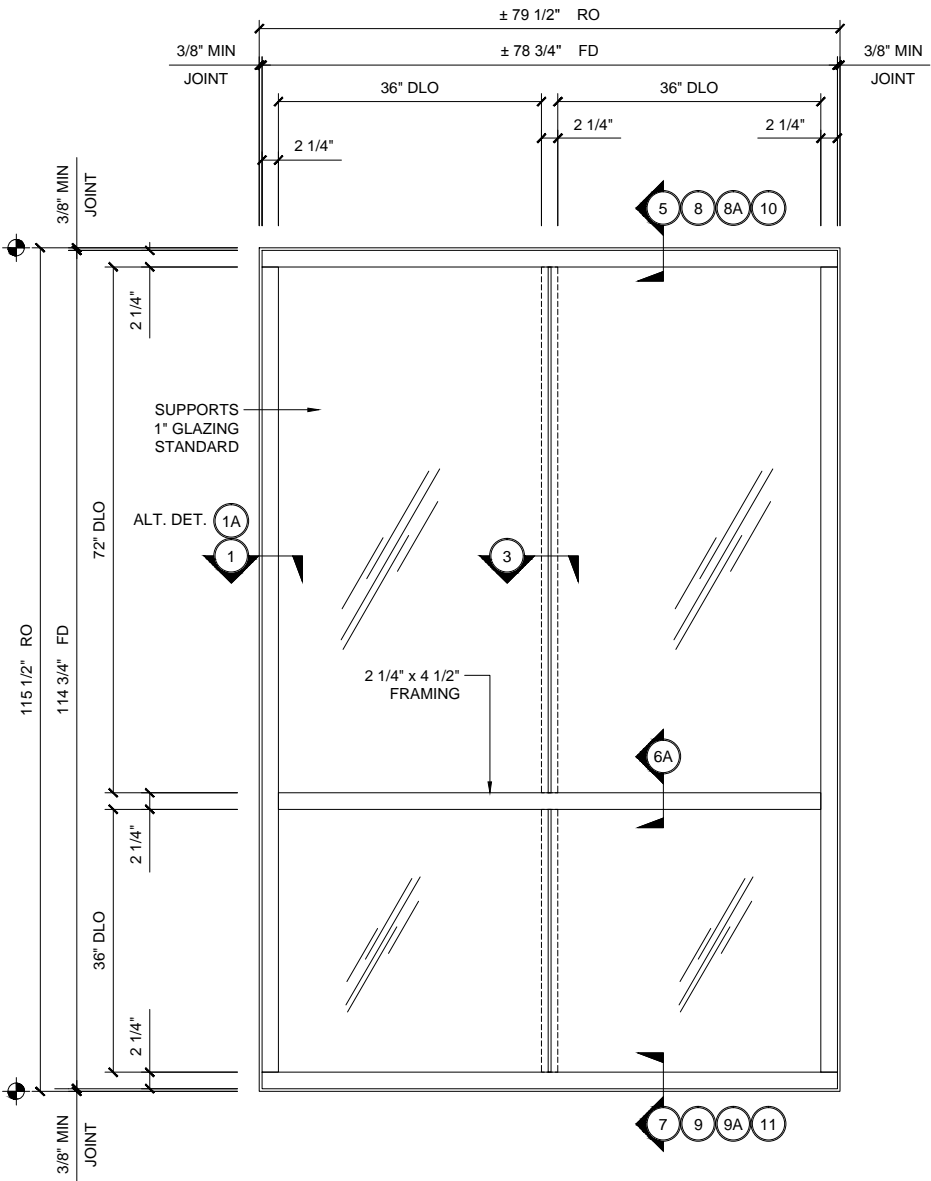
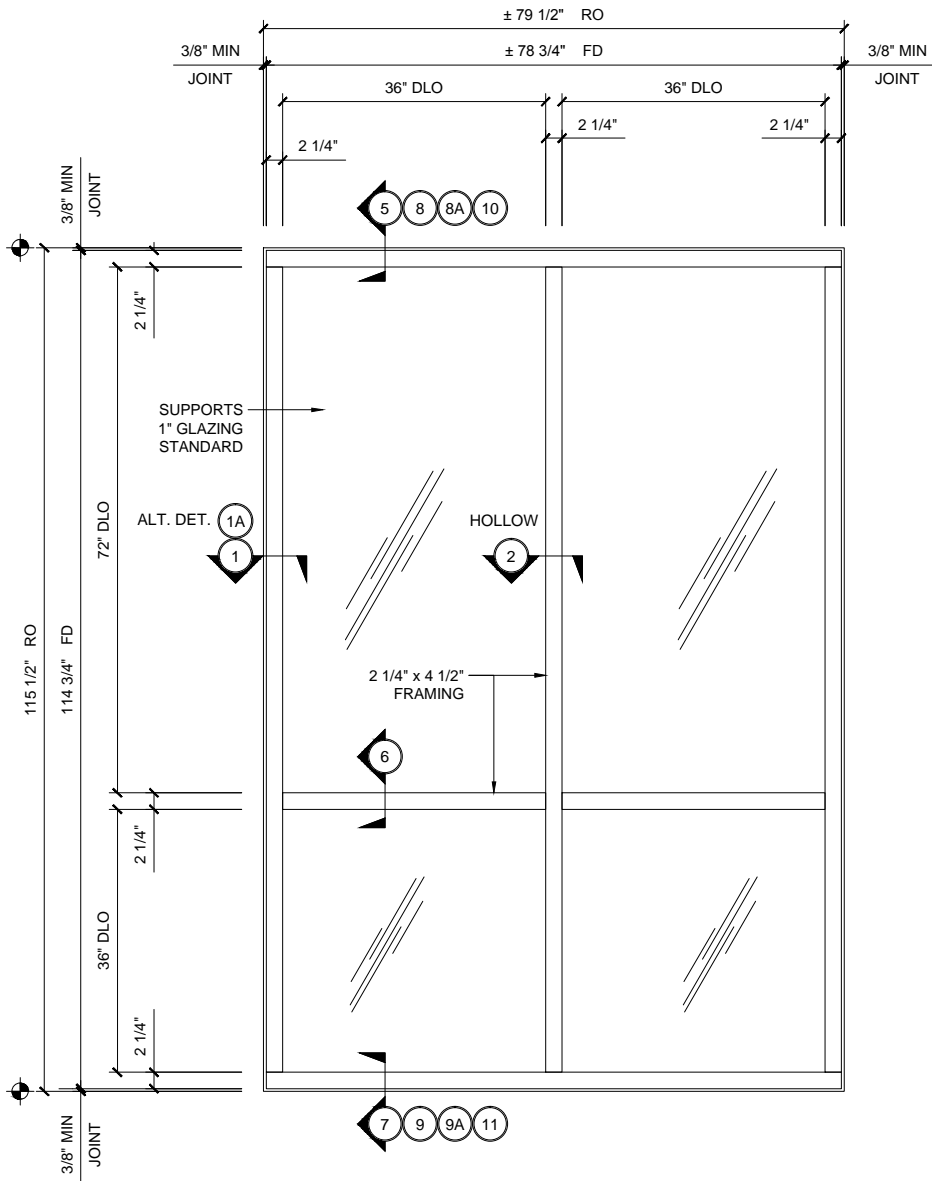
1"=1'-0"

GLASS SIZING NOTE:  
REFERENCE U.S. ALUMINUM  
CATALOGS AND WEBSITE'S  
LOAD CHARTS FOR SIZING  
GUIDELINES.

TN 451 SERIES SPECIFICATIONS

The Top Notch Systems offer a shallow face reveal that creates a flush exterior appearance. These systems are designed for labor saving stacking type installations that requires glazing from the interior. Series TN451 and TT451 utilize wedge-type molded corner exterior sponge gaskets for superior air and water performances. Internal water deflectors at intermediate horizontal to vertical intersections allow infiltrated water to be drained into a continuous sill gutter and weeped to the exterior. Vertical mullions for structural silicone glazing are also available. The Top Notch Systems are designed for fixed horizontal window wall or punched opening applications.

2 1/4" x 4 1/2" frame  
Full range of accessory components  
Available in an array of architectural coatings and anodized finishes  
Interior Glazed



STANDARD ABBREVIATIONS	
RO	ROUGH OPENING
FD	FRAME DIMENSION
DLO	DAYLIGHT OPENING
DO	DOOR OPENING
DD	DOOR DIMENSION
SMC	SURFACE MOUNTED CLOSER
OHCC	OVERHEAD CONCEALED CLOSER

Revisions By:

CRL ALUMINUM

C.R. LAURENCE CO. ARCHITECTURAL PRODUCTS  
2303 E. Vernon Avenue, Los Angeles, CA 90058-1897  
PH (800) 421-6144 FX 800-587-7501 www.crlaurence.com

Discription:

U.S. ALUMINUM  
TOP NOTCH SYSTEM  
SERIES TN451 / SERIES TT451  
SYSTEM DRAWINGS

Drawn By: RPD  
Date: 11/14/14  
Scale: AS NOTED  
File Name: TN451/TT451.dwg  
Sheet



WINDOW WALLS

SERIES TN 451 TOP NOTCH SYSTEM  
FIXED HORIZONTAL WINDOW WALL

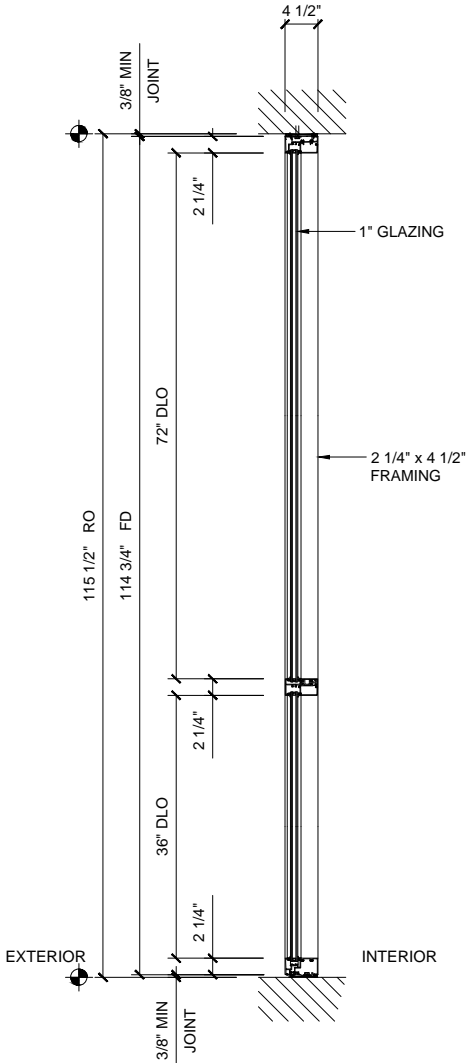
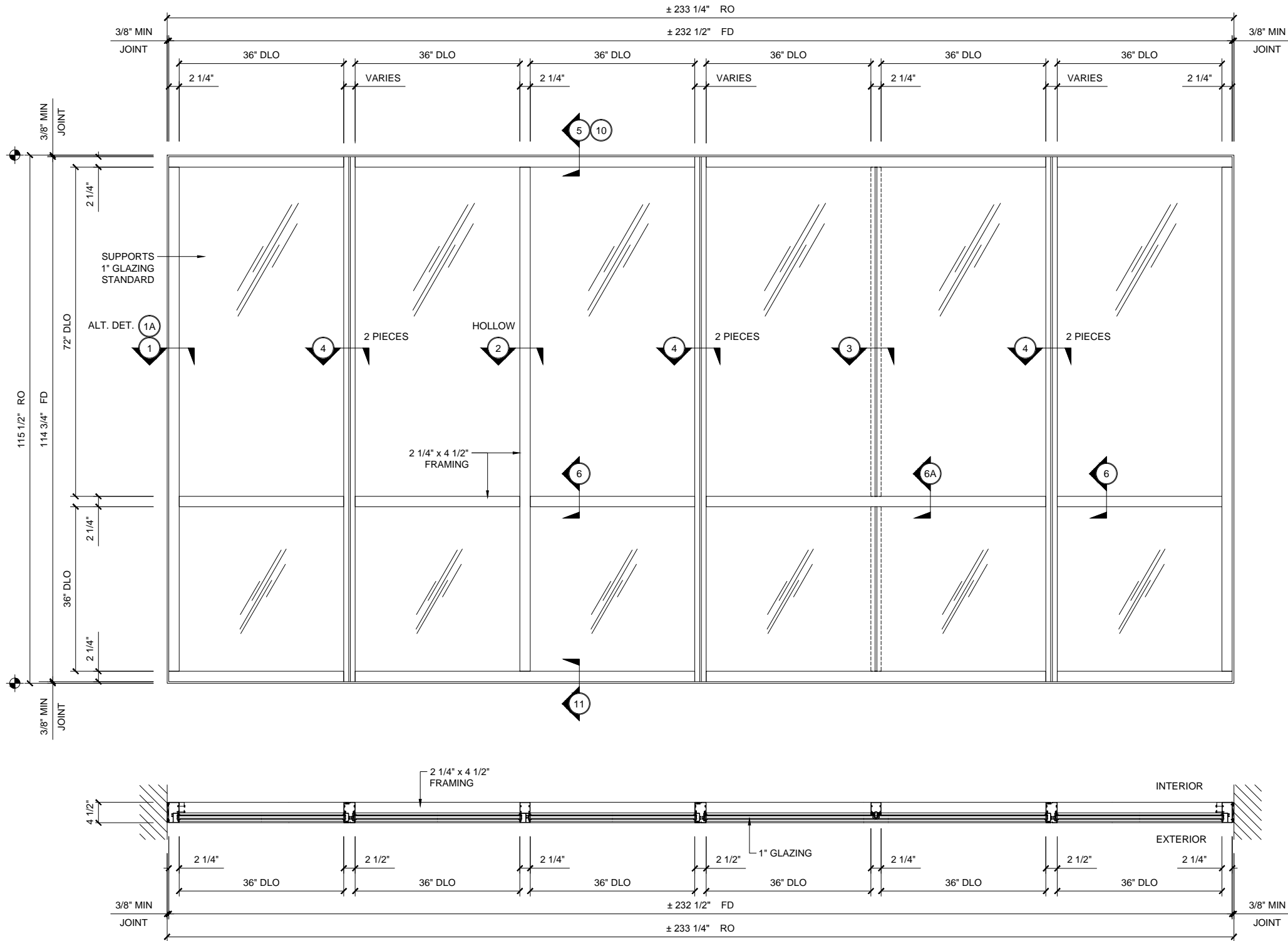
1"=1'-0"

GLASS SIZING NOTE:  
REFERENCE U.S. ALUMINUM  
CATALOGS AND WEBSITE'S  
LOAD CHARTS FOR SIZING  
GUIDELINES.

TN 451 SERIES SPECIFICATIONS

The Top Notch Systems offer a shallow face reveal that creates a flush exterior appearance. These systems are designed for labor saving stacking type installations that requires glazing from the interior. Series TN451 and TT451 utilize wedge-type molded corner exterior sponge gaskets for superior air and water performances. Internal water deflectors at intermediate horizontal to vertical intersections allow infiltrated water to be drained into a continuous sill gutter and weeped to the exterior. Vertical mullions for structural silicone glazing are also available. The Top Notch Systems are designed for fixed horizontal window wall or punched opening applications.

2 1/4" x 4 1/2" frame  
Full range of accessory components  
Available in an array of architectural coatings and anodized finishes  
Interior Glazed



STANDARD ABBREVIATIONS

RO	ROUGH OPENING
FD	FRAME DIMENSION
DLO	DAYLIGHT OPENING
DO	DOOR OPENING
DD	DOOR DIMENSION
SMC	SURFACE MOUNTED CLOSER
OHCC	OVERHEAD CONCEALED CLOSER

Revisions By:

Discription:

U.S. ALUMINUM  
TOP NOTCH SYSTEM  
SERIES TN451 / SERIES TT451  
SYSTEM DRAWINGS

Drawn By: RPD

Date: 11/14/14

Scale: AS NOTED

File Name: TN451/TT451.dwg

Sheet

TN451.02

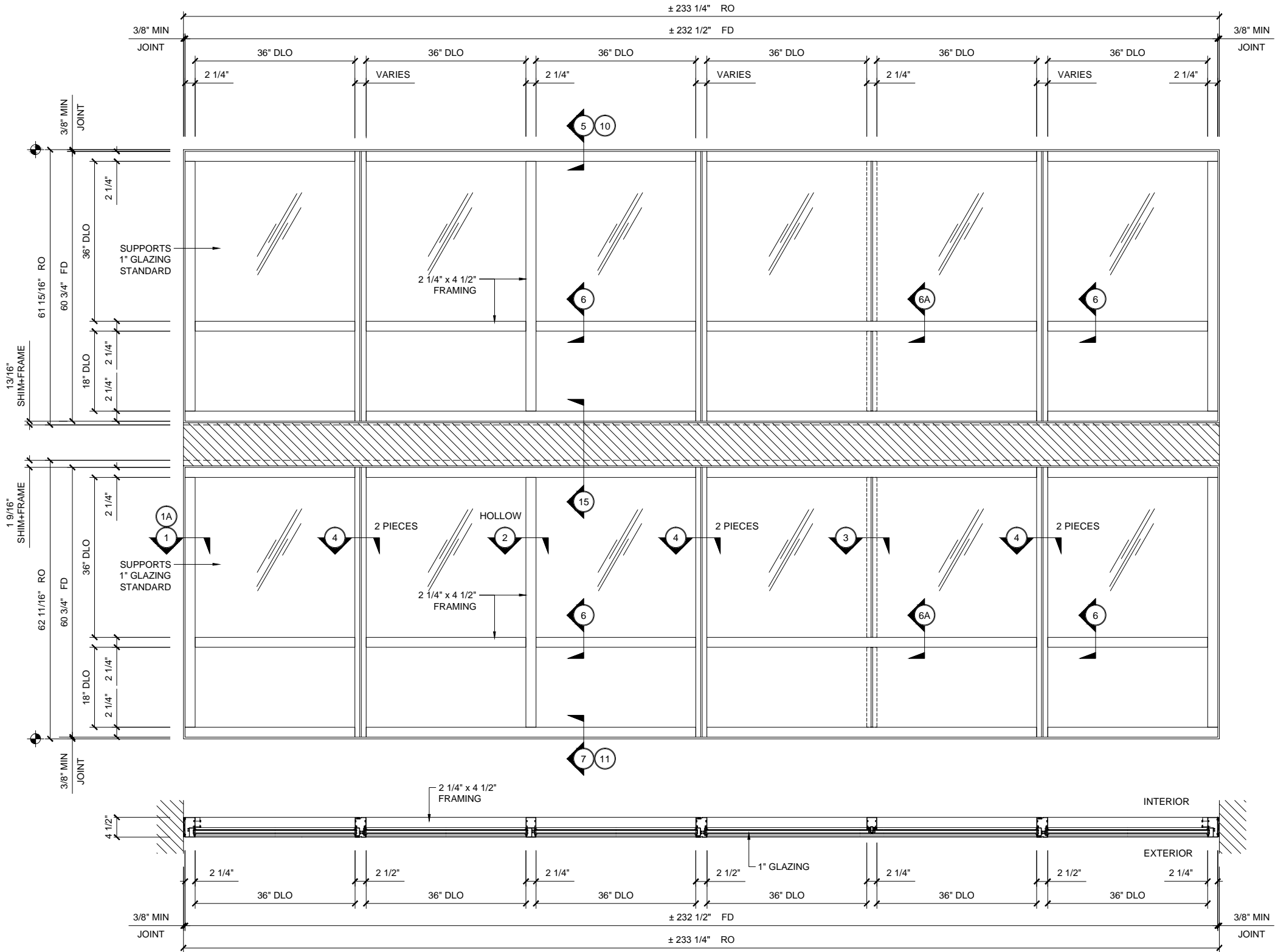
CRL  
U.S. ALUMINUM  
C.R. LAURENCE CO. ARCHITECTURAL PRODUCTS  
2303 E. Vernon Avenue, Los Angeles, CA 90058-1897  
PH (800) 421-6144 FX 800-587-7501 www.crlaurence.com



WINDOW WALLS

SERIES TN 451 TOP NOTCH SYSTEM  
FIXED HORIZONTAL WINDOW WALL @ INTERSTORY

1"=1'-0"

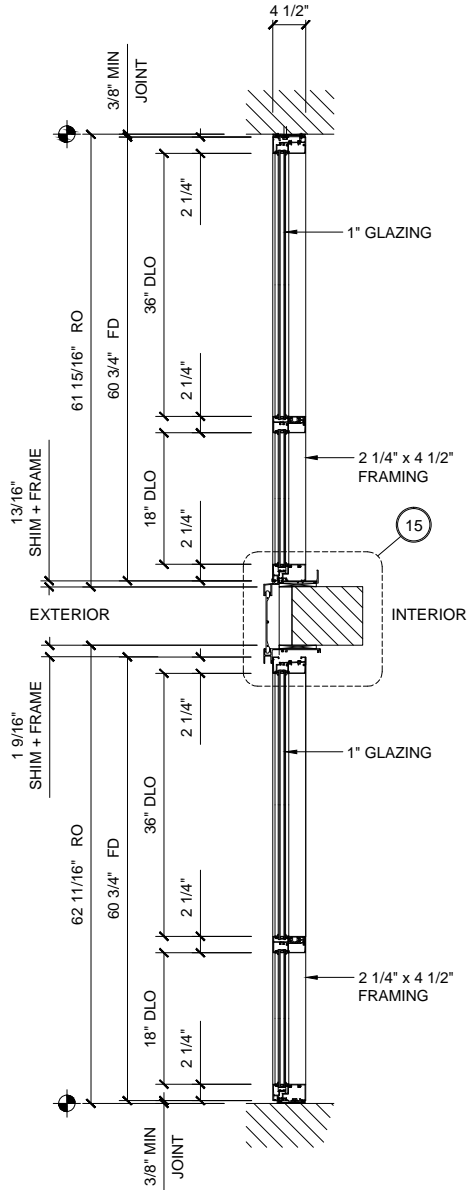


GLASS SIZING NOTE:  
REFERENCE U.S. ALUMINUM  
CATALOGS AND WEBSITE'S  
LOAD CHARTS FOR SIZING  
GUIDELINES.

TN 451 SERIES SPECIFICATIONS

The Top Notch Systems offer a shallow face reveal that creates a flush exterior appearance. These systems are designed for labor saving stacking type installations that requires glazing from the interior. Series TN451 and TT451 utilize wedge-type molded corner exterior sponge gaskets for superior air and water performances. Internal water deflectors at intermediate horizontal to vertical intersections allow infiltrated water to be drained into a continuous sill gutter and weeped to the exterior. Vertical mullions for structural silicone glazing are also available. The Top Notch Systems are designed for fixed horizontal window wall or punched opening applications.

2 1/4" x 4 1/2" frame  
Full range of accessory components  
Available in an array of architectural coatings and anodized finishes  
Interior Glazed



STANDARD ABBREVIATIONS

RO	ROUGH OPENING
FD	FRAME DIMENSION
DLO	DAYLIGHT OPENING
DO	DOOR OPENING
DD	DOOR DIMENSION
SMC	SURFACE MOUNTED CLOSER
OHCC	OVERHEAD CONCEALED CLOSER

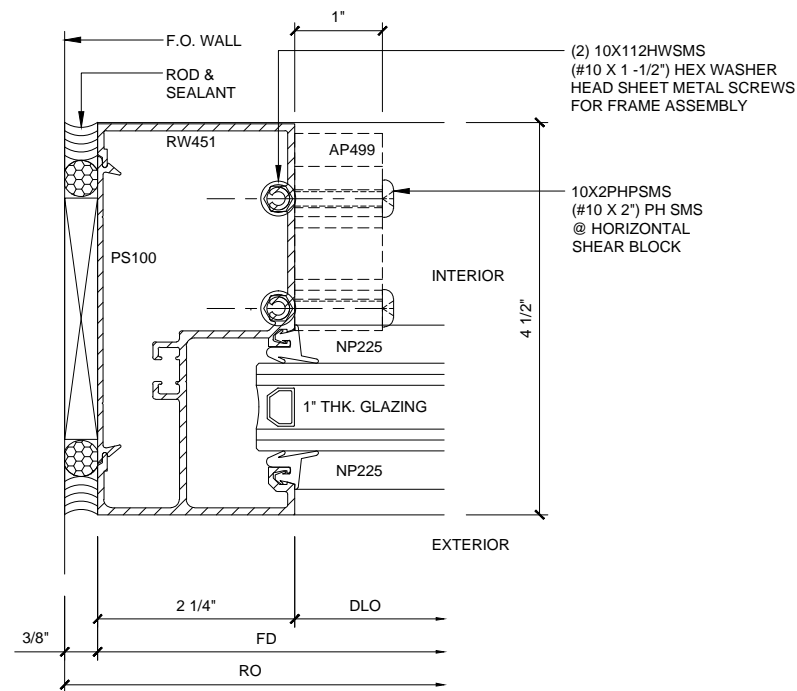
Revisions By:



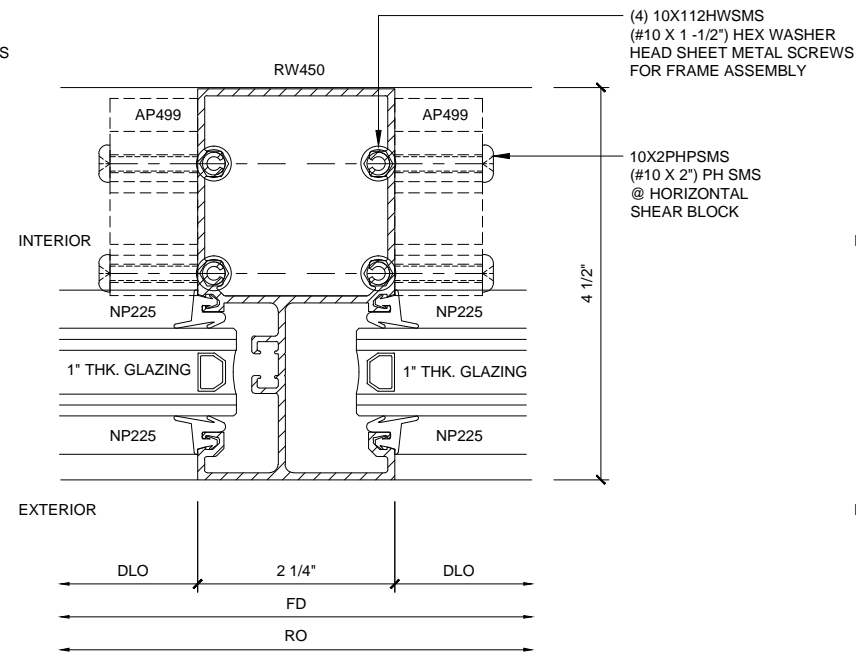
U.S. ALUMINUM  
TOP NOTCH SYSTEM  
SERIES TN451 / SERIES TT451  
SYSTEM DRAWINGS

Drawn By: RPD  
Date: 11/14/14  
Scale: AS NOTED  
File Name: TN451/TT451.dwg  
Sheet

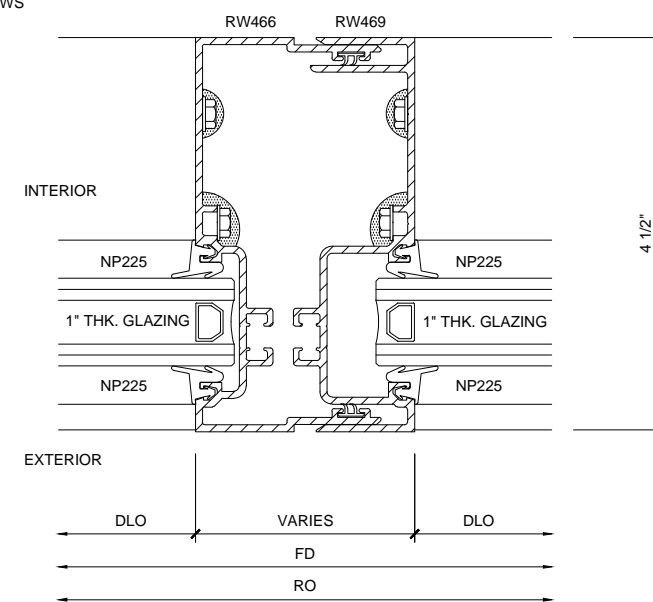
TN451.03



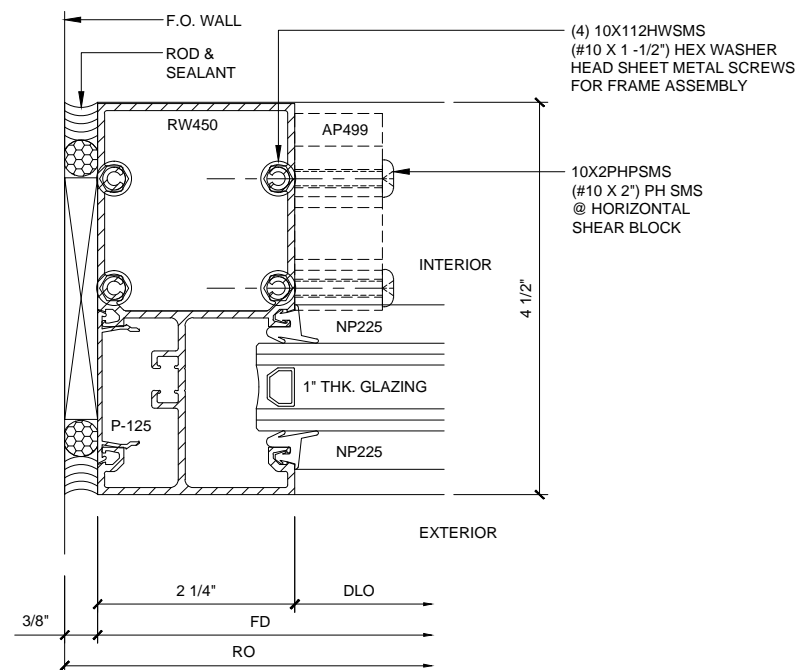
**JAMB SECTION ①**



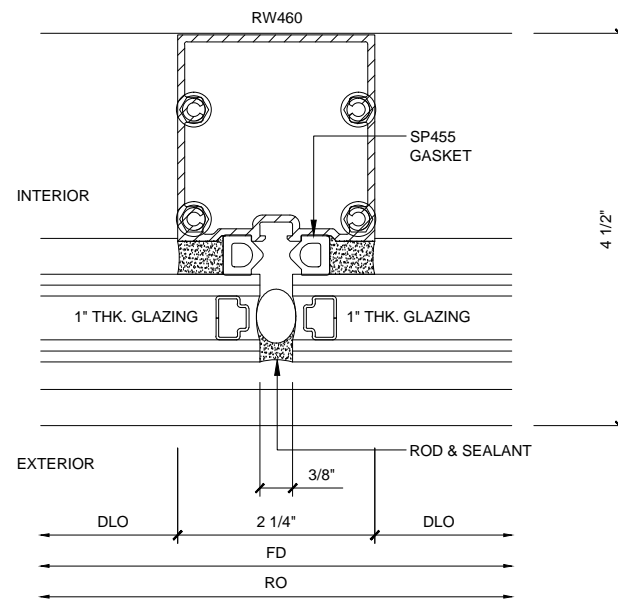
**INT. VERT. SECTION ②**



**INT. VERT. SECTION ④**



**JAMB SECTION ①A**  
ALTERNATE DETAIL



**INT. VERT. SECTION ③**

## WINDOW WALL SERIES TN451 TOP NOTCH SYSTEM

1'-0" = 1'-0"

Revisions By:



C.R. LAURENCE CO. ARCHITECTURAL PRODUCTS  
2303 E. Vernon Avenue, Los Angeles, CA 90058-1897  
PH (800) 421-6144 FX 800-587-7501 www.crlaurence.com

Description:

U.S. ALUMINUM  
TOP NOTCH SYSTEM  
SERIES TN451 / SERIES TT451  
SYSTEM DRAWINGS

Drawn By: RPD

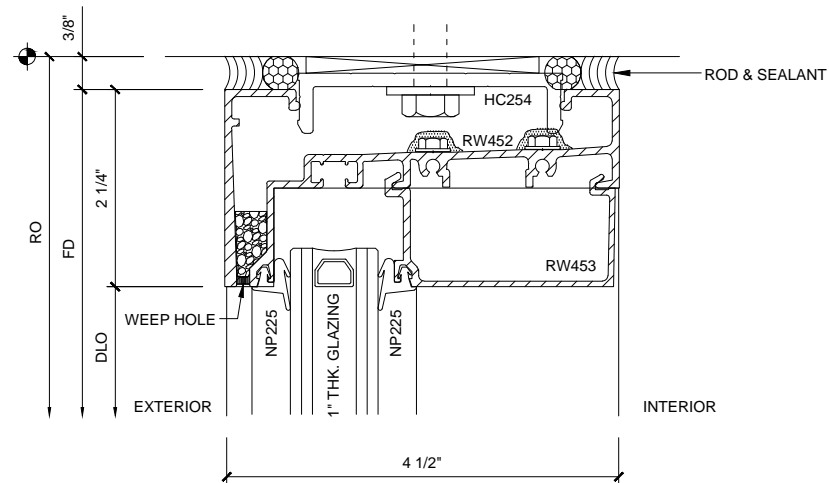
Date: 11/14/14

Scale: AS NOTED

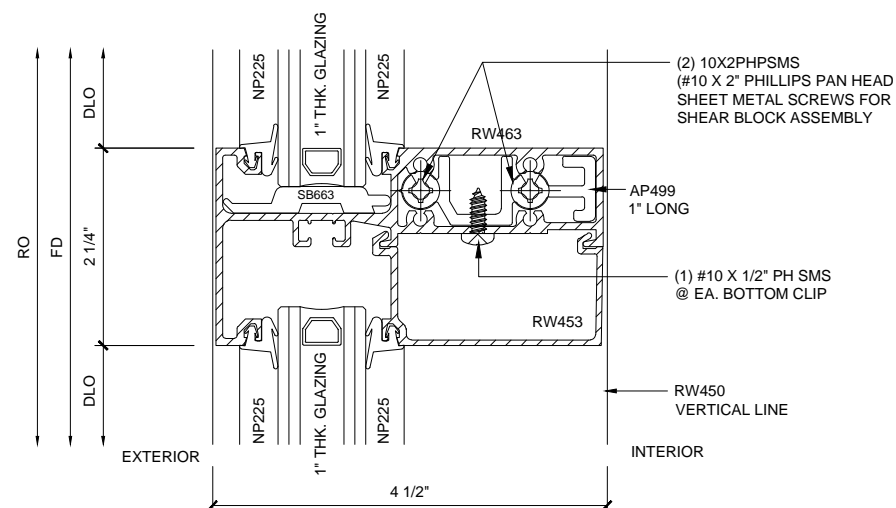
File Name: TN451/TT451.dwg

Sheet

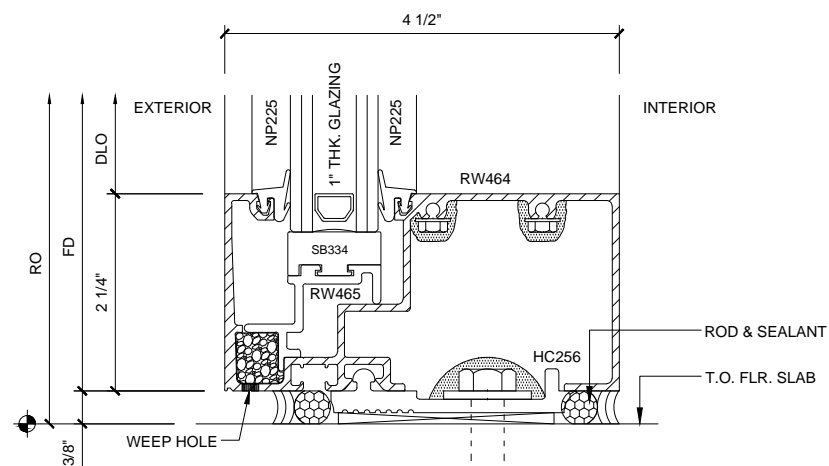
TN451.04



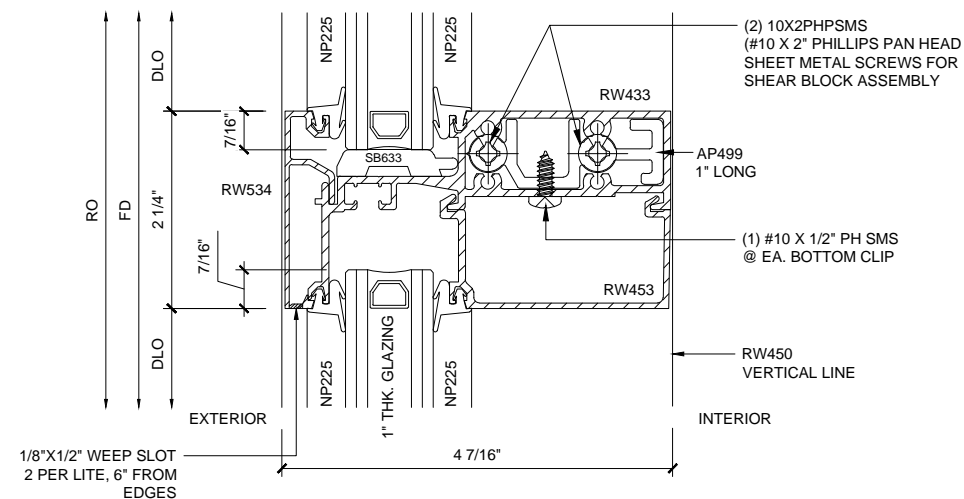
**HEAD SECTION 5**



**INT. HOR. SECTION 6**



**SILL SECTION 7**



**INT. HOR. SECTION  
FOR STRUCTURAL  
SILICONE GLAZING 6A**  
ALTERNATE DETAIL

**WINDOW WALL SERIES TN451 TOP NOTCH SYSTEM**

1'-0" = 1'-0"

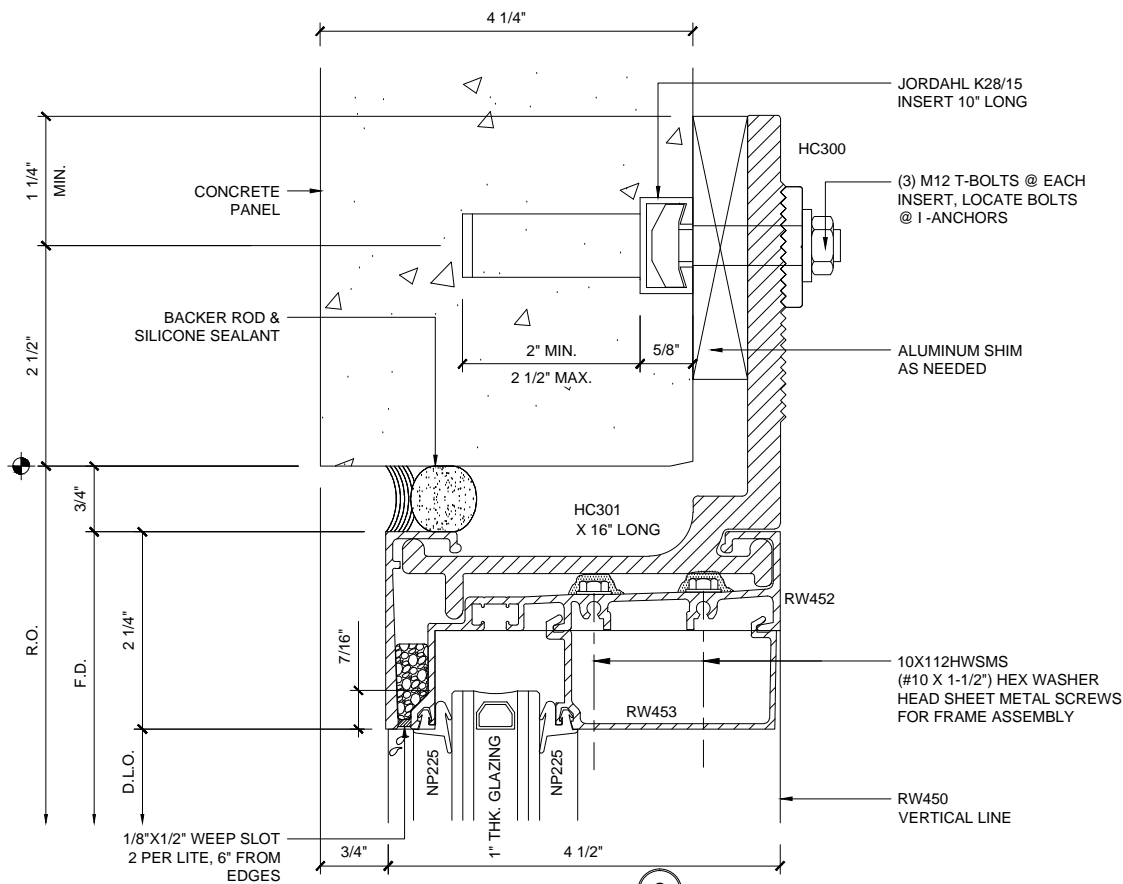
Revisions By:

**CAL ALUMINUM**  
C.R. LAURENCE CO. ARCHITECTURAL PRODUCTS  
2303 E. Vernon Avenue, Los Angeles, CA 90058-1897  
PH (800) 421-6144 FX 800-587-7501 www.crlaurence.com

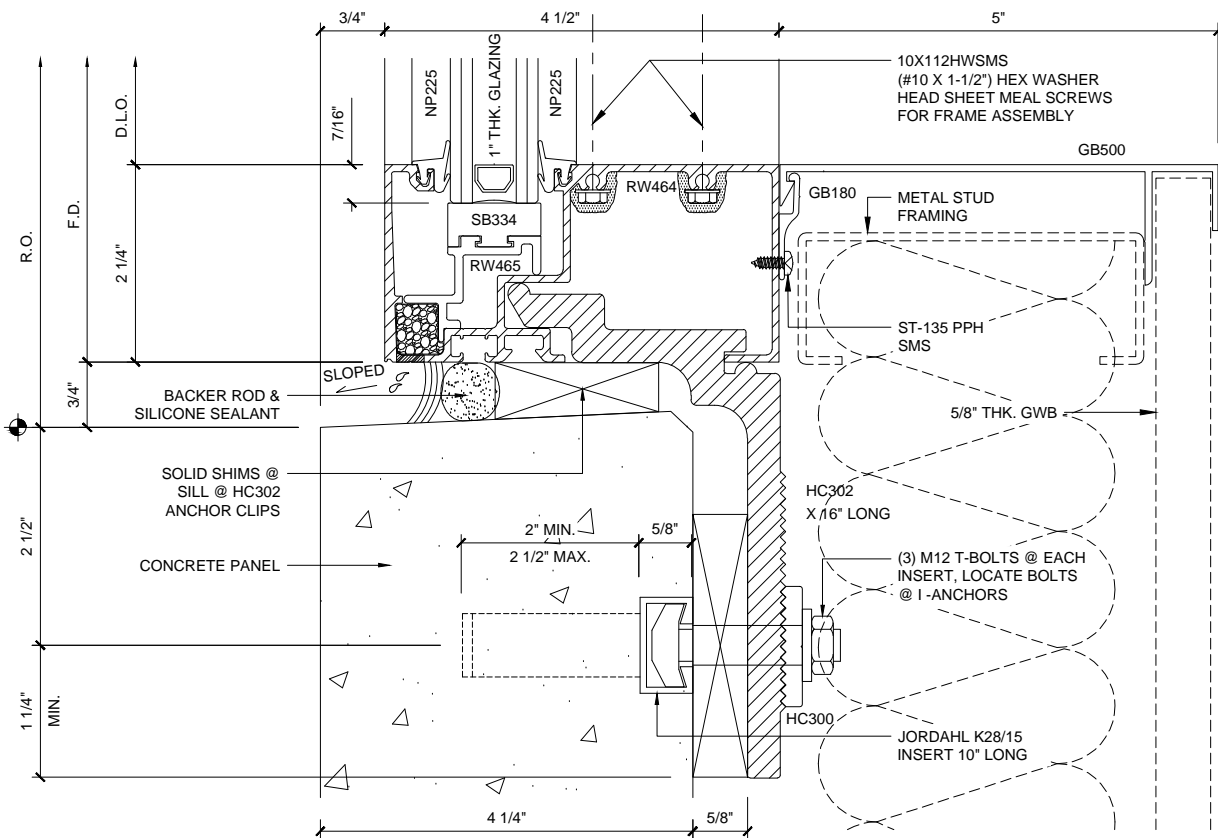
U.S. ALUMINUM  
TOP NOTCH SYSTEM  
SERIES TN451 / SERIES TT451  
SYSTEM DRAWINGS

Drawn By: RPD  
Date: 11/14/14  
Scale: AS NOTED  
File Name: TN451/TT451.dwg  
Sheet

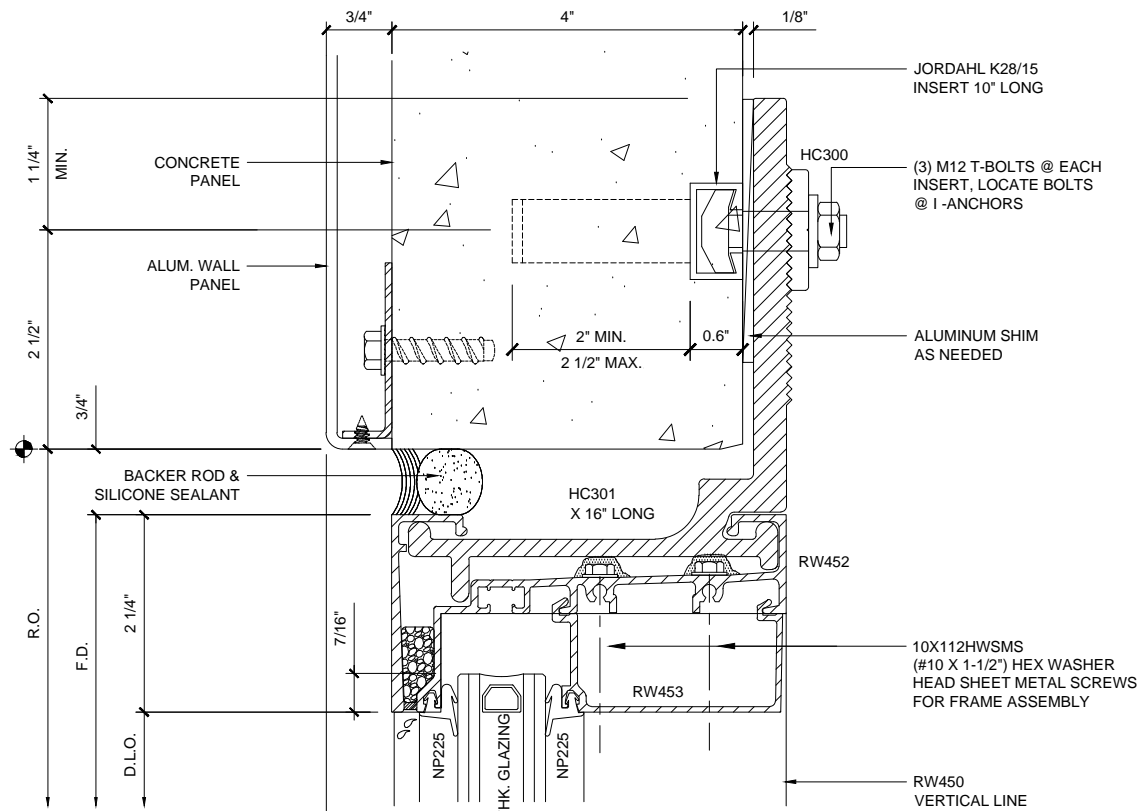
**TN451.05**



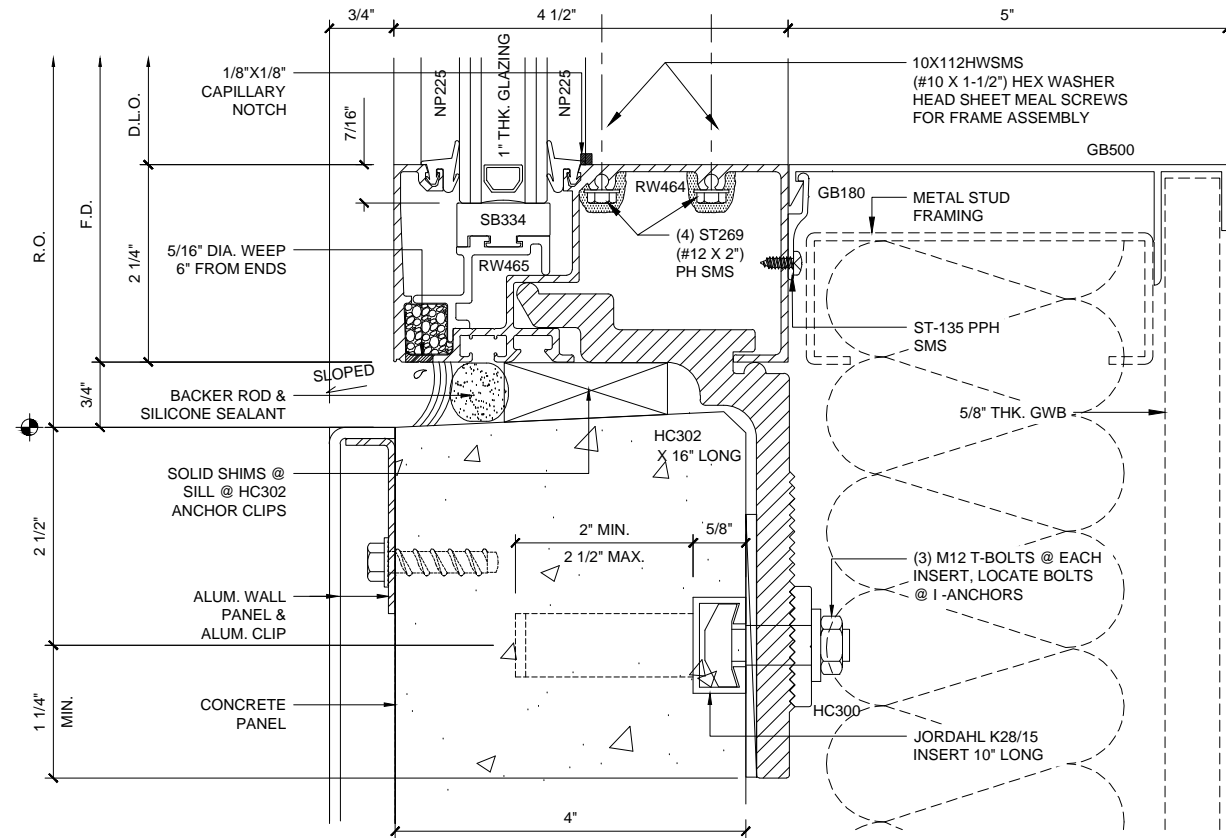
**HEAD SECTION 8**  
@ PRE-CAST PANEL



**SILL SECTION 9**  
@ PRE-CAST PANEL



**HEAD SECTION 8A**  
@ ALUM. WALL PANEL



**SILL SECTION 9A**  
@ ALUM. WALL PANEL

## WINDOW WALL SERIES TN451 TOP NOTCH SYSTEM

1'-0" = 1'-0"

Revisions By:



C.R. LAURENCE CO. ARCHITECTURAL PRODUCTS  
2303 E. Vernon Avenue, Los Angeles, CA 90058-1897  
PH (800) 421-6144 FX 800-587-7501 www.crlaurence.com

Description:

U.S. ALUMINUM  
TOP NOTCH SYSTEM  
SERIES TN451 / SERIES TT451  
SYSTEM DRAWINGS

Drawn By: RPD

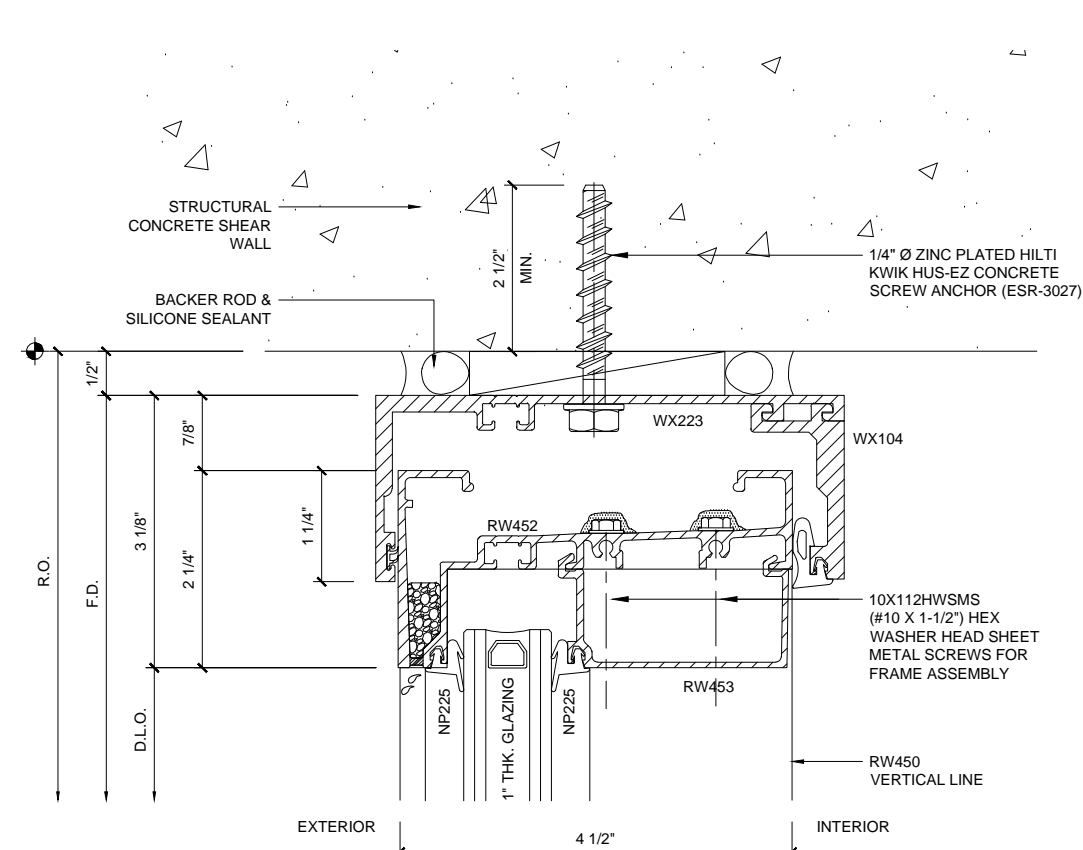
Date: 11/14/14

Scale: AS NOTED

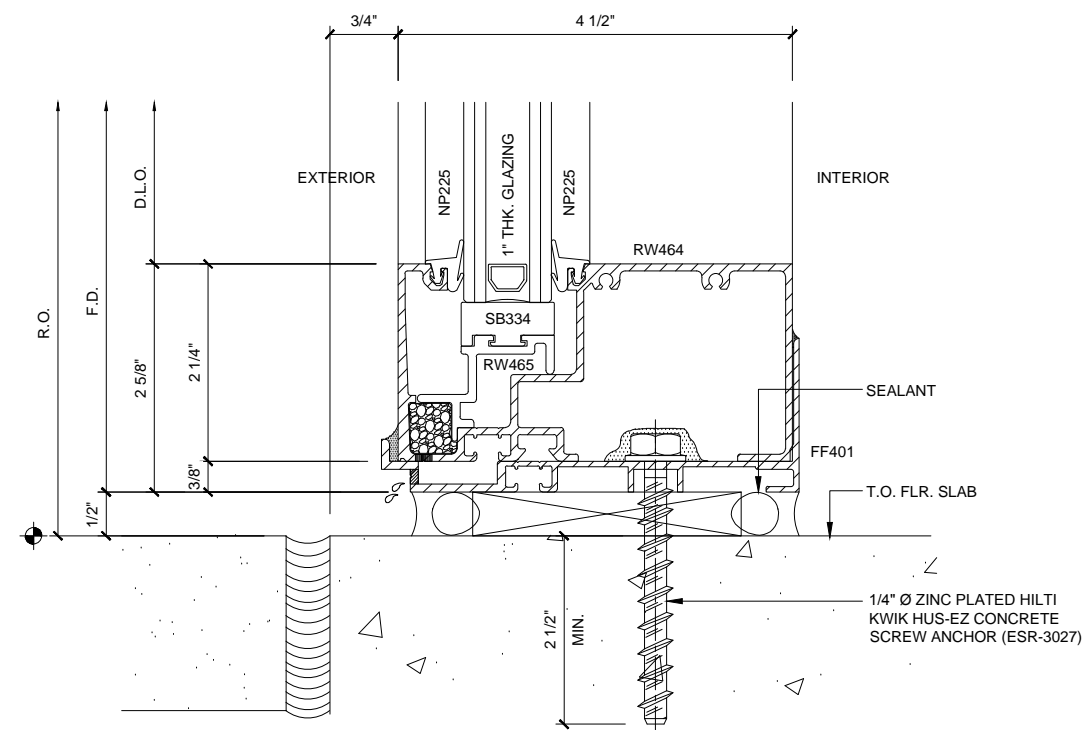
File Name: TN451/TT451.dwg

Sheet

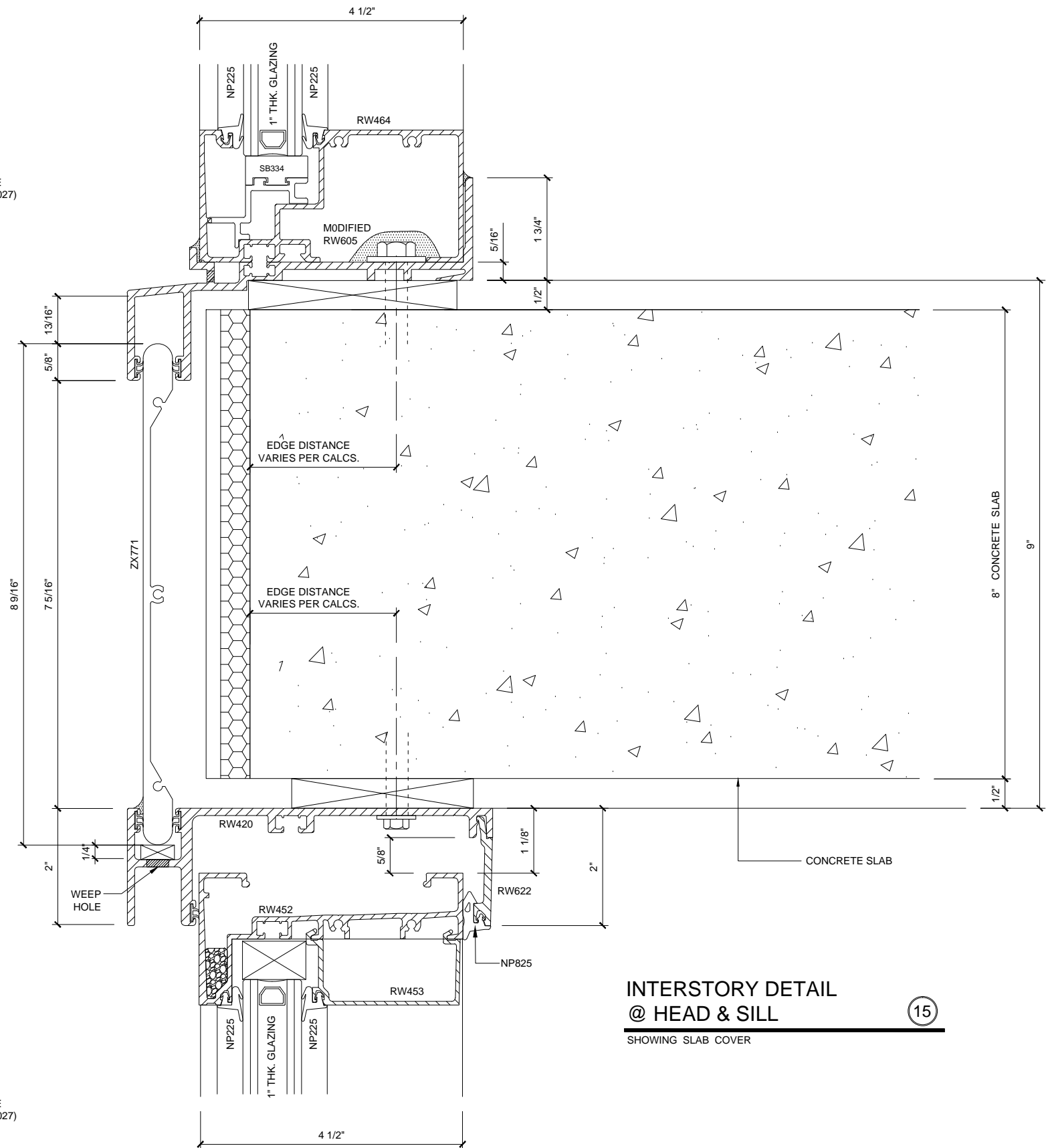
TN451.06



**HEAD SECTION 10**  
WITH RECEIVER



**SILL SECTION 11**  
AT BALCONIES



**INTERSTORY DETAIL @ HEAD & SILL 15**  
SHOWING SLAB COVER

## WINDOW WALL SERIES TN451 TOP NOTCH SYSTEM

1'-0" = 1'-0"

Revisions By:



C.R. LAURENCE CO. ARCHITECTURAL PRODUCTS  
2303 E. Vernon Avenue, Los Angeles, CA 90058-1897  
PH (800) 421-6144 FX 800-587-7501 www.crlaurence.com

Description:

U.S. ALUMINUM  
TOP NOTCH SYSTEM  
SERIES TN451 / SERIES TT451  
SYSTEM DRAWINGS

Drawn By: RPD

Date: 11/14/14

Scale: AS NOTED

File Name: TN451/TT451.dwg

Sheet

TN451.07



WINDOW WALLS

SERIES TT 451 TOP NOTCH SYSTEM  
PUNCHED WINDOW

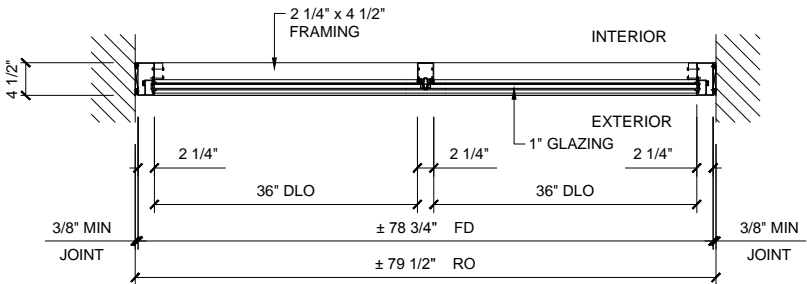
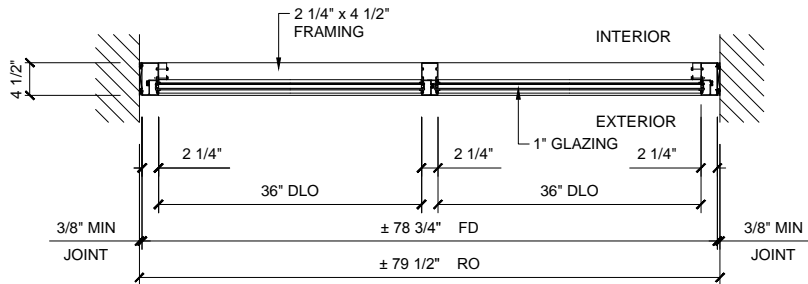
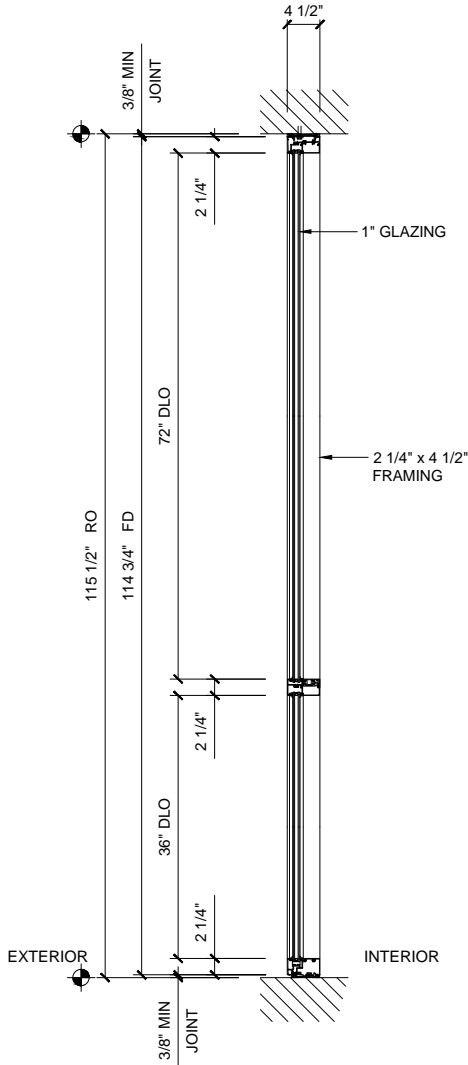
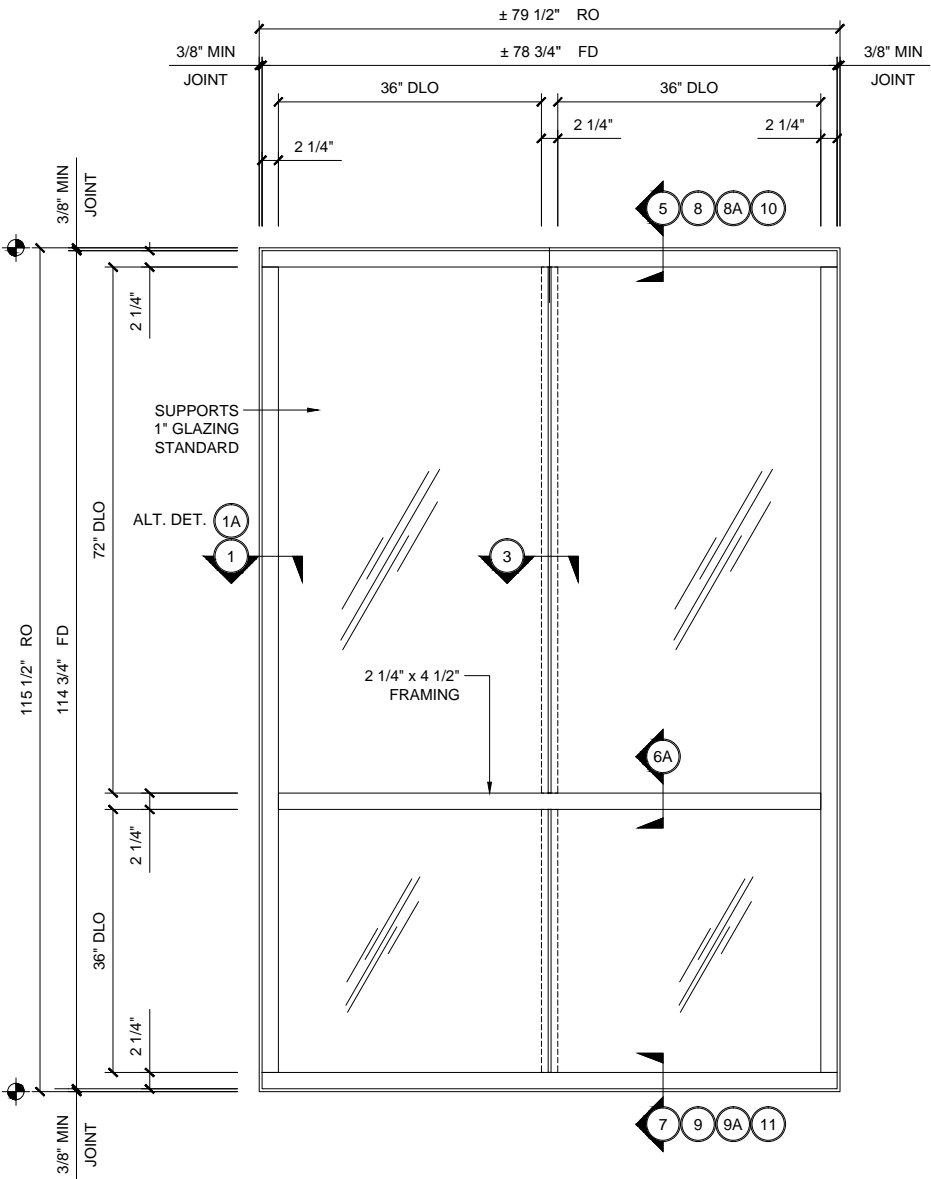
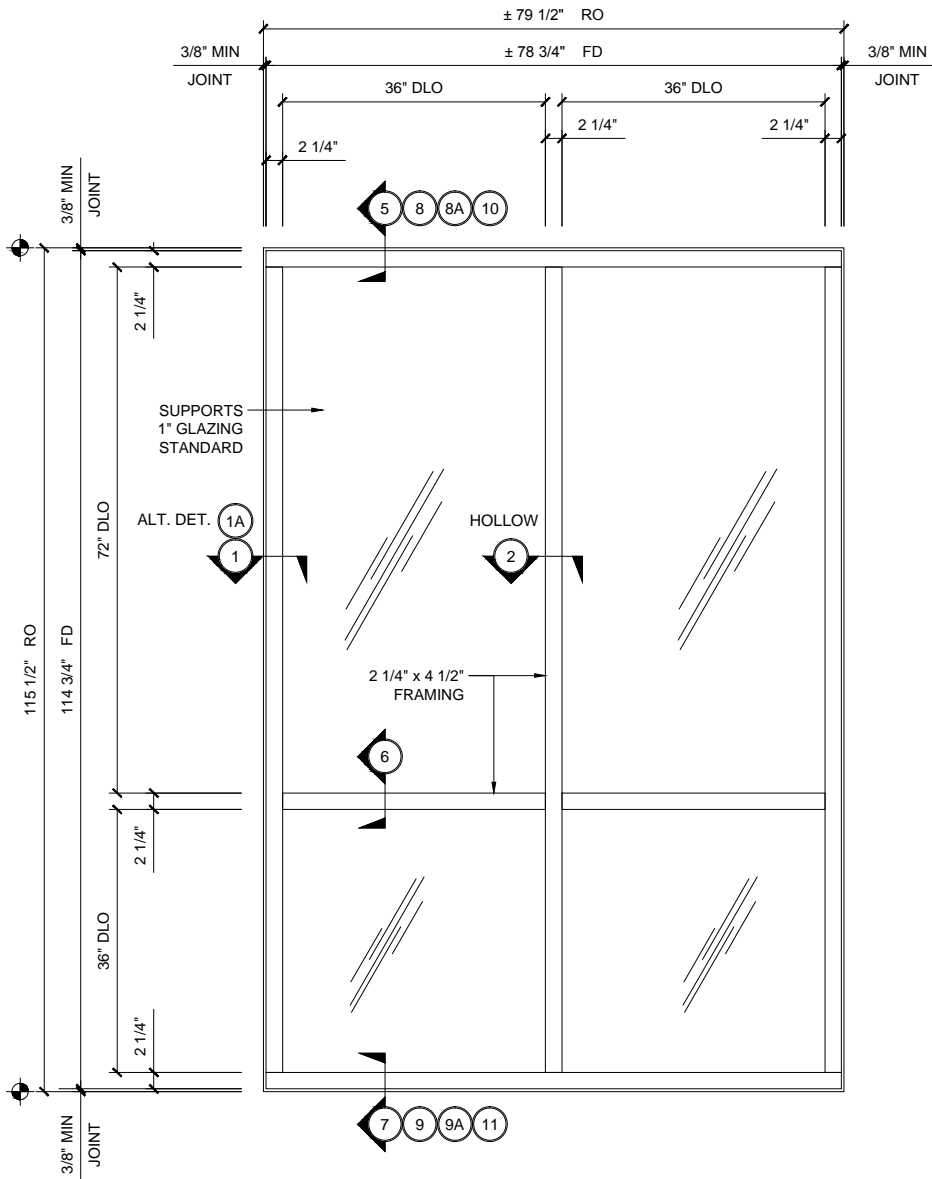
1"=1'-0"

GLASS SIZING NOTE:  
REFERENCE U.S. ALUMINUM  
CATALOGS AND WEBSITE'S  
LOAD CHARTS FOR SIZING  
GUIDELINES.

TT 451 SERIES SPECIFICATIONS

The Top Notch Systems offer a shallow face reveal that creates a flush exterior appearance. These systems are designed for labor saving stacking type installations that requires glazing from the interior. Series TN451 and TT451 utilize wedge-type molded corner exterior sponge gaskets for superior air and water performances. Internal water deflectors at intermediate horizontal to vertical intersections allow infiltrated water to be drained into a continuous sill gutter and weeped to the exterior. Vertical mullions for structural silicone glazing are also available. The Top Notch Systems are designed for fixed horizontal window wall or punched opening applications.

2 1/4" x 4 1/2" frame  
Full range of accessory components  
Available in an array of architectural coatings and anodized finishes  
Interior Glazed



STANDARD ABBREVIATIONS

RO ROUGH OPENING  
FD FRAME DIMENSION  
DLO DAYLIGHT OPENING  
DO DOOR OPENING  
DD DOOR DIMENSION  
SMC SURFACE MOUNTED CLOSER  
OHCC OVERHEAD CONCEALED CLOSER

Revisions By:

Discription:

U.S. ALUMINUM  
TOP NOTCH SYSTEM  
SERIES TN451 / SERIES TT451  
SYSTEM DRAWINGS

Drawn By: RPD

Date: 11/14/14

Scale: AS NOTED

File Name: TN451/TT451.dwg

Sheet

TT451.01

CRL  
ALUMINUM  
C.R. LAURENCE CO. ARCHITECTURAL PRODUCTS  
2303 E. Vernon Avenue, Los Angeles, CA 90058-1897  
PH (800) 421-6144 FX 800-587-7501 www.crlaurence.com



WINDOW WALLS

SERIES TT 451 TOP NOTCH SYSTEM  
FIXED HORIZONTAL WINDOW WALL

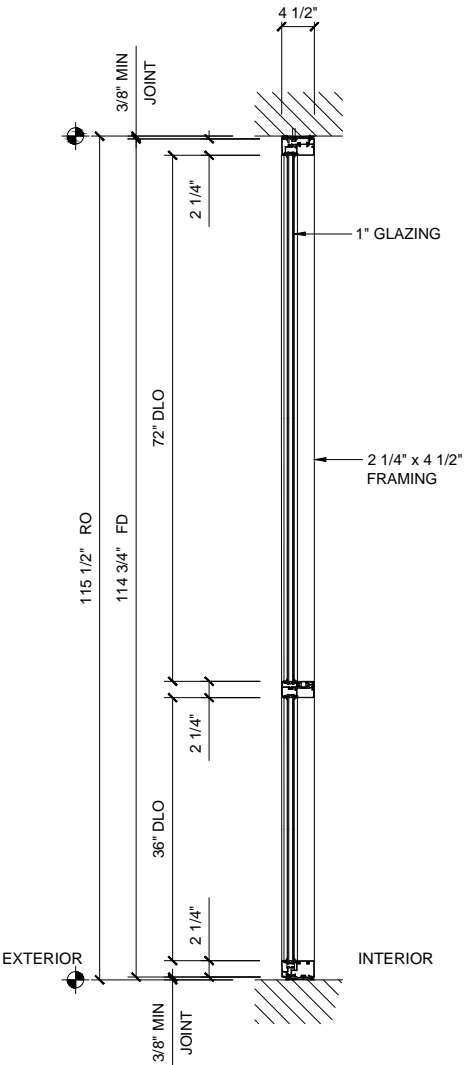
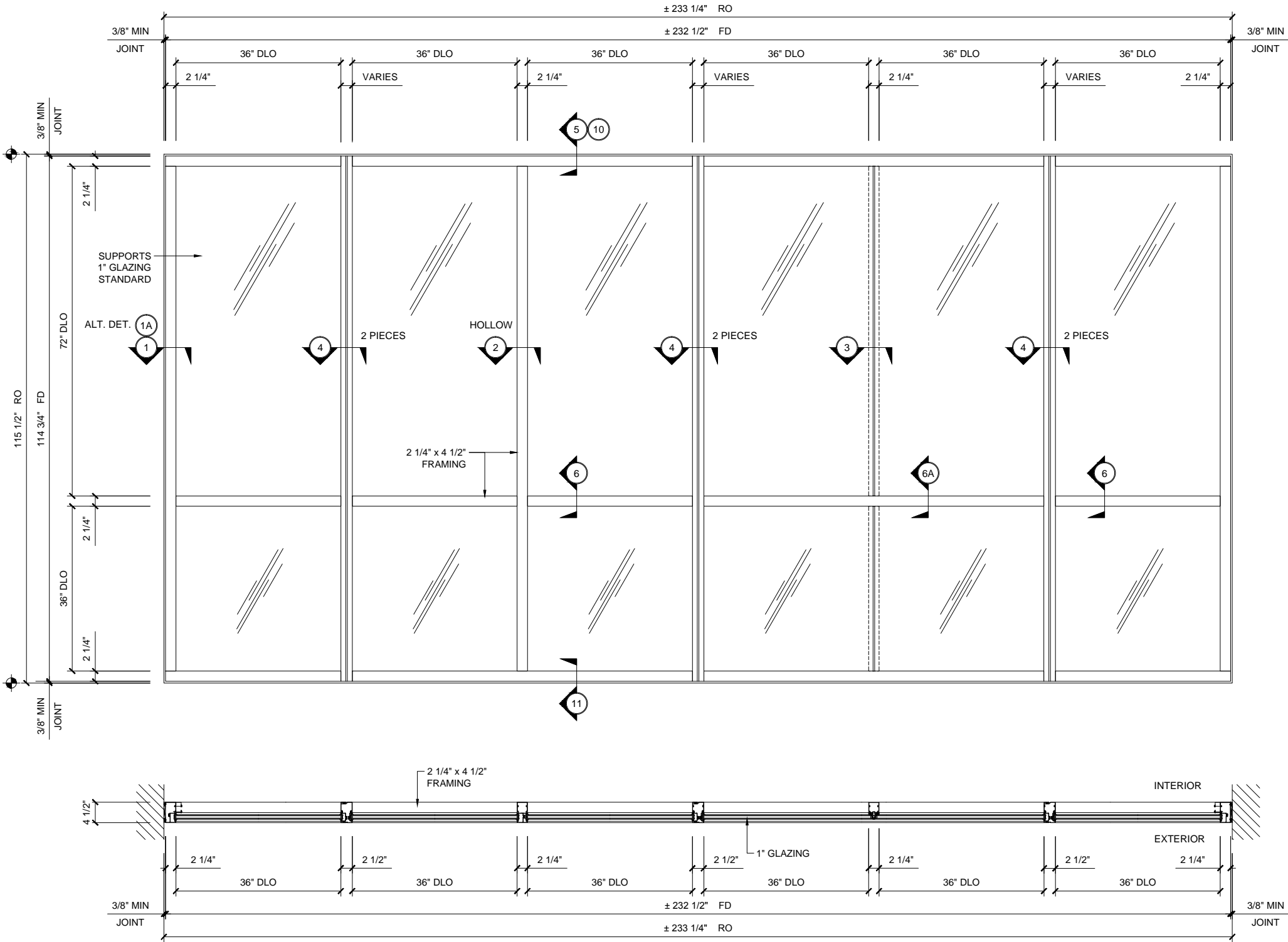
1"=1'-0"

GLASS SIZING NOTE:  
REFERENCE U.S. ALUMINUM  
CATALOGS AND WEBSITE'S  
LOAD CHARTS FOR SIZING  
GUIDELINES.

TT 451 SERIES SPECIFICATIONS

The Top Notch Systems offer a shallow face reveal that creates a flush exterior appearance. These systems are designed for labor saving stacking type installations that requires glazing from the interior. Series TN451 and TT451 utilize wedge-type molded corner exterior sponge gaskets for superior air and water performances. Internal water deflectors at intermediate horizontal to vertical intersections allow infiltrated water to be drained into a continuous sill gutter and weeped to the exterior. Vertical mullions for structural silicone glazing are also available. The Top Notch Systems are designed for fixed horizontal window wall or punched opening applications.

2 1/4" x 4 1/2" frame  
Full range of accessory components  
Available in an array of architectural coatings and anodized finishes  
Interior Glazed



STANDARD ABBREVIATIONS

RO	ROUGH OPENING
FD	FRAME DIMENSION
DLO	DAYLIGHT OPENING
DO	DOOR OPENING
DD	DOOR DIMENSION
SMC	SURFACE MOUNTED CLOSER
OHCC	OVERHEAD CONCEALED CLOSER

Revisions By:

Discription:

U.S. ALUMINUM  
TOP NOTCH SYSTEM  
SERIES TN451 / SERIES TT451  
SYSTEM DRAWINGS

Drawn By: RPD  
Date: 11/14/14  
Scale: AS NOTED  
File Name: TN451/TT451.dwg  
Sheet

TT451.02



WINDOW WALLS

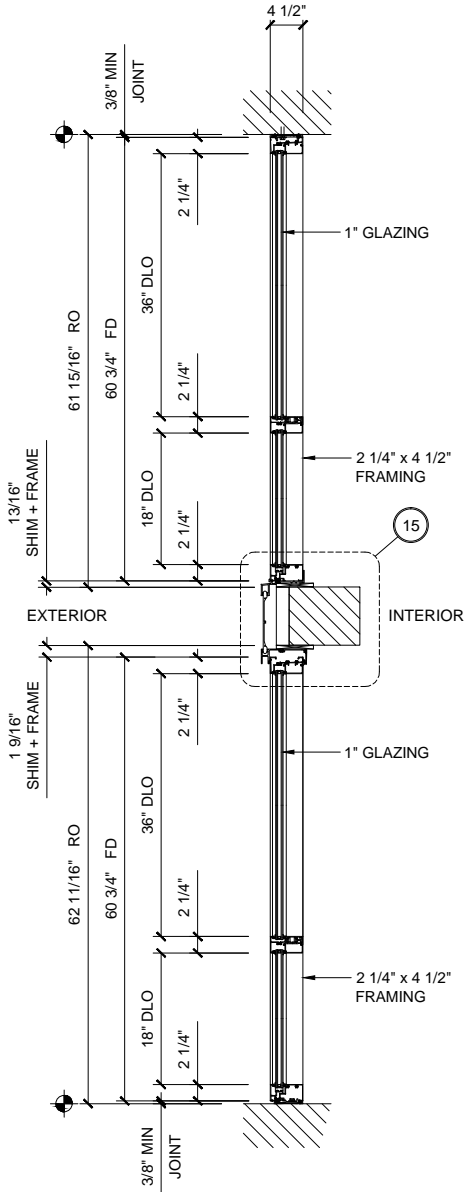
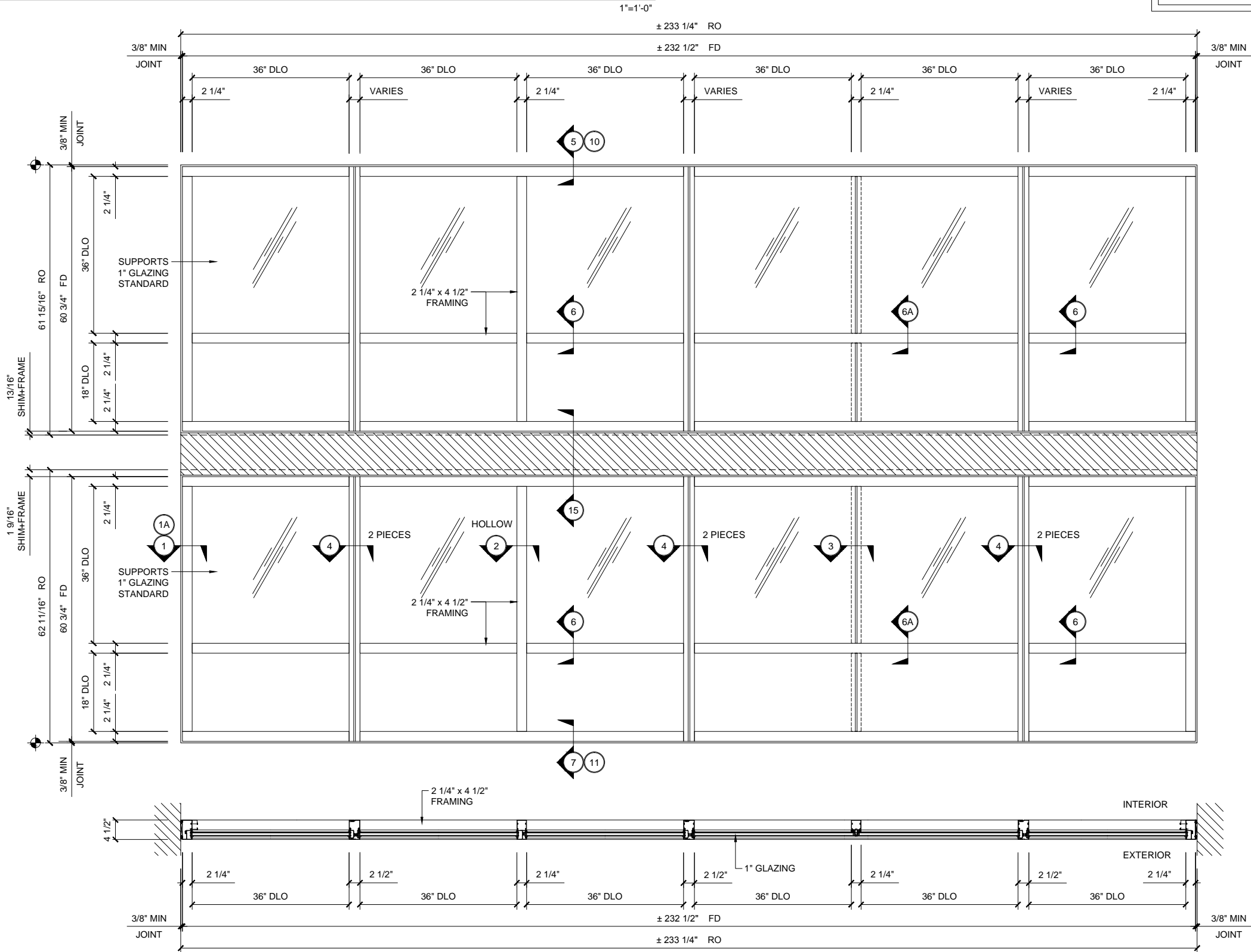
SERIES TT 451 TOP NOTCH SYSTEM  
FIXED HORIZONTAL WINDOW WALL @ INTERSTORY

GLASS SIZING NOTE:  
REFERENCE U.S. ALUMINUM  
CATALOGS AND WEBSITE'S  
LOAD CHARTS FOR SIZING  
GUIDELINES.

TT 451 SERIES SPECIFICATIONS

The Top Notch Systems offer a shallow face reveal that creates a flush exterior appearance. These systems are designed for labor saving stacking type installations that requires glazing from the interior. Series TN451 and TT451 utilize wedge-type molded corner exterior sponge gaskets for superior air and water performances. Internal water deflectors at intermediate horizontal to vertical intersections allow infiltrated water to be drained into a continuous sill gutter and weeped to the exterior. Vertical mullions for structural silicone glazing are also available. The Top Notch Systems are designed for fixed horizontal window wall or punched opening applications.

2 1/4" x 4 1/2" frame  
Full range of accessory components  
Available in an array of architectural coatings and anodized finishes  
Interior Glazed



STANDARD ABBREVIATIONS	
RO	ROUGH OPENING
FD	FRAME DIMENSION
DLO	DAYLIGHT OPENING
DO	DOOR OPENING
DD	DOOR DIMENSION
SMC	SURFACE MOUNTED CLOSER
OHCC	OVERHEAD CONCEALED CLOSER

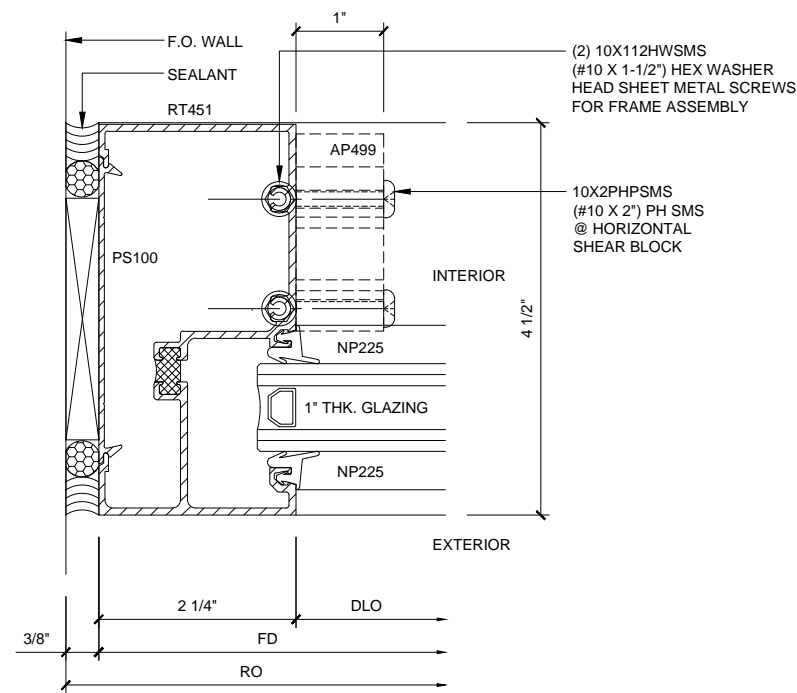
Revisions By:

CRL ALUMINUM

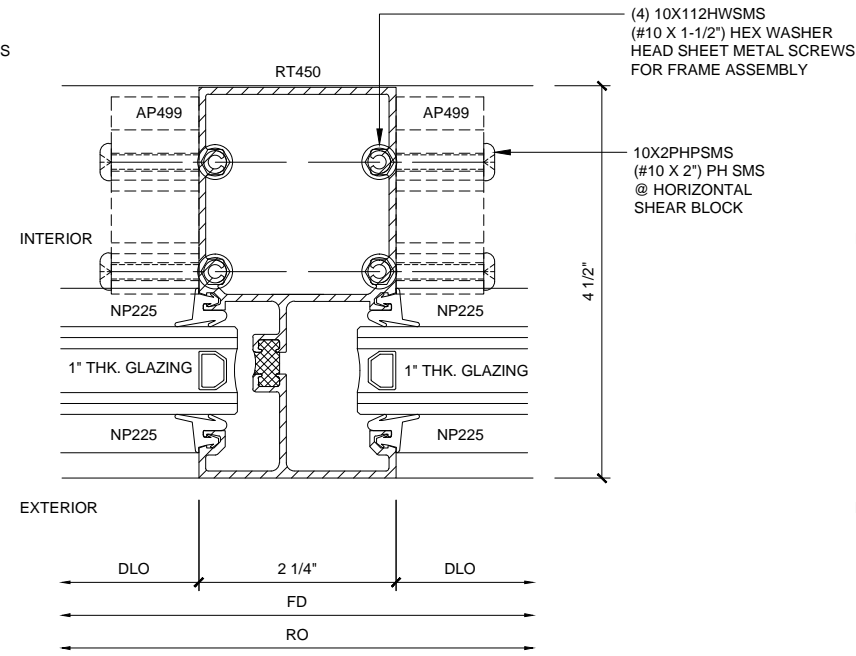
C.R. LAURENCE CO. ARCHITECTURAL PRODUCTS  
2303 E. Vernon Avenue, Los Angeles, CA 90058-1897  
PH (800) 421-6144 FX 800-587-7501 www.crlaurence.com

U.S. ALUMINUM  
TOP NOTCH SYSTEM  
SERIES TN451 / SERIES TT451  
SYSTEM DRAWINGS

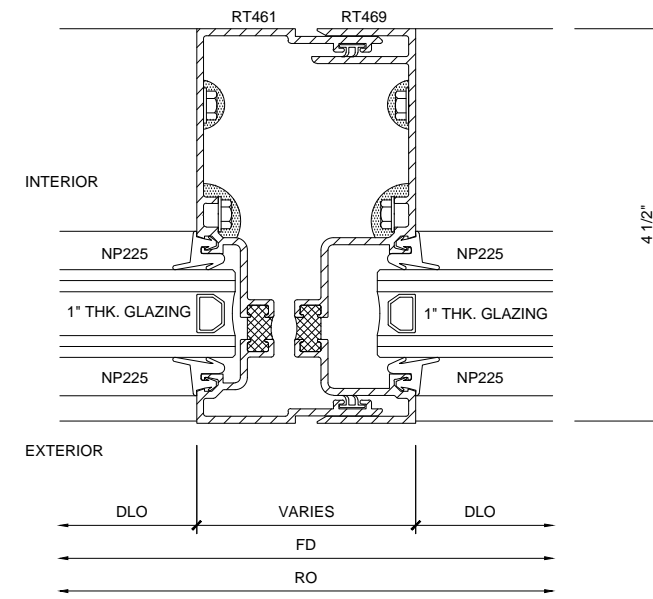
Drawn By: RPD  
Date: 11/14/14  
Scale: AS NOTED  
File Name: TN451/TT451.dwg  
Sheet



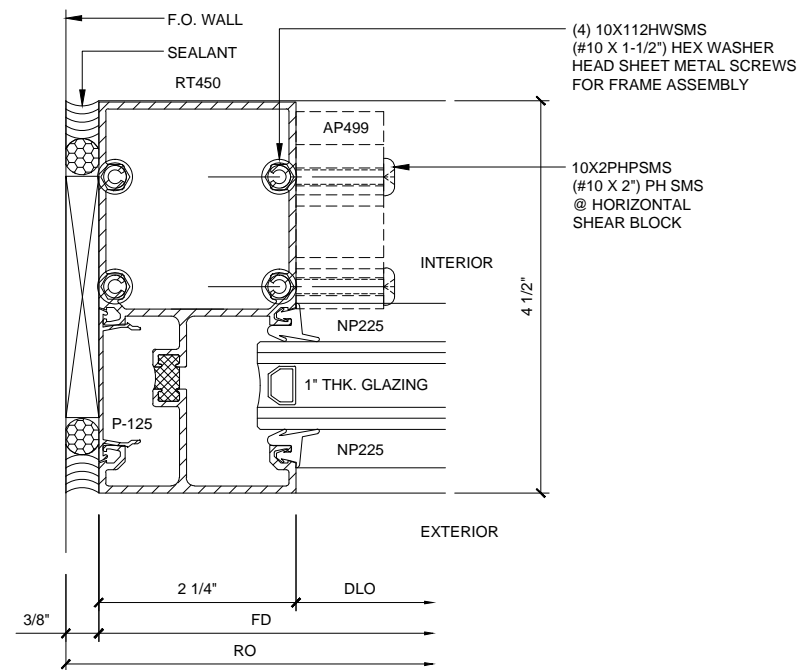
**JAMB SECTION ①**



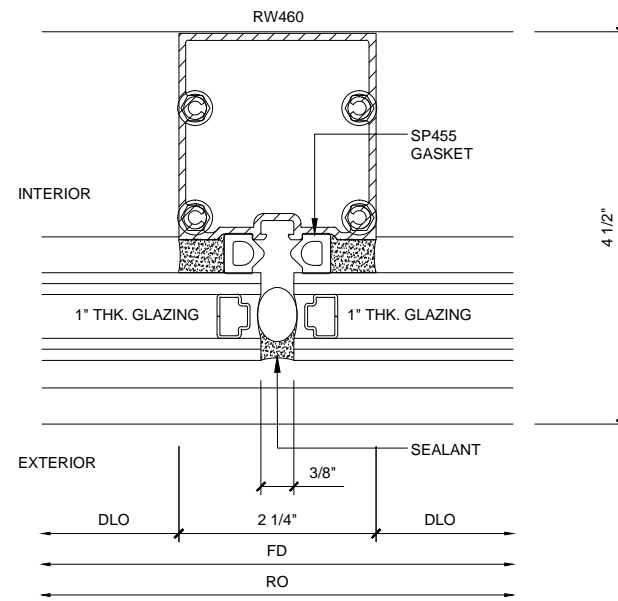
**INT. VERT. SECTION ②**



**INT. VERT. SECTION ④**



**JAMB SECTION ①A**  
ALTERNATE DETAIL



**INT. VERT. SECTION ③**

**WINDOW WALL SERIES TT451 TOP NOTCH SYSTEM**  
WITH THERMALLY BROKEN PARTS

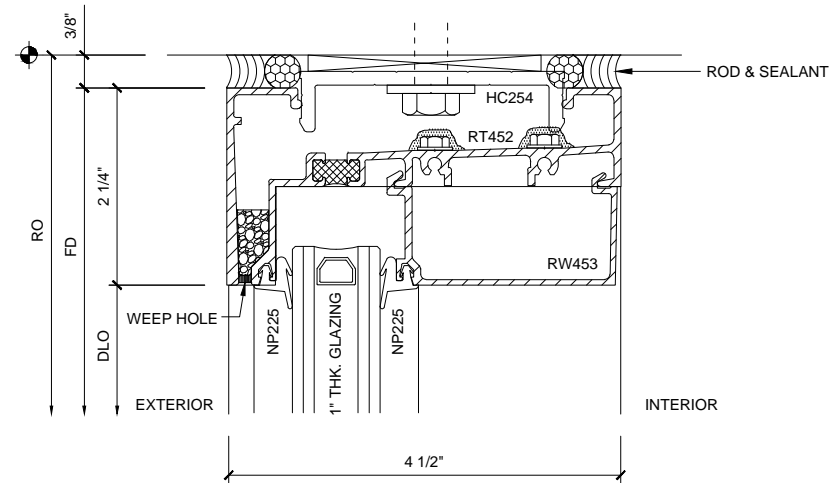
Revisions By:

**CAL ALUMINUM**  
C.R. LAURENCE CO. ARCHITECTURAL PRODUCTS  
2303 E. Vernon Avenue, Los Angeles, CA 90058-1897  
PH (800) 421-6144 FX 800-587-7501 www.crlaurence.com

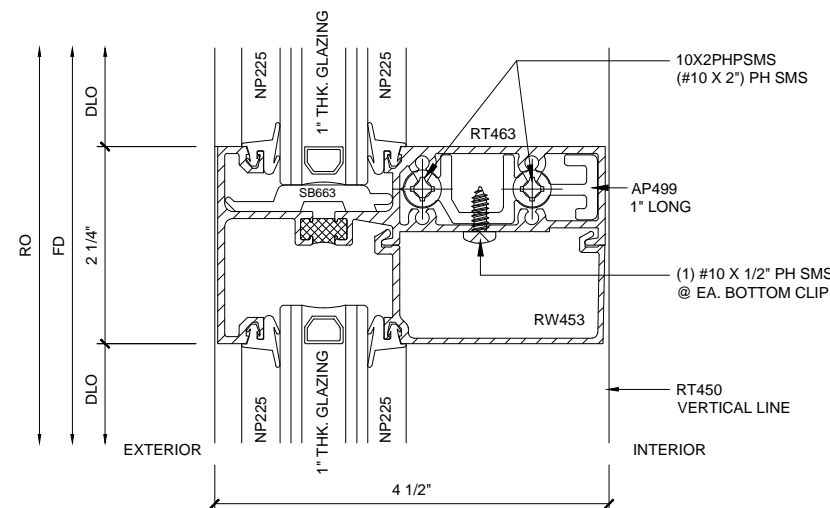
Discription:  
U.S. ALUMINUM  
TOP NOTCH SYSTEM  
SERIES TN451 / SERIES TT451  
SYSTEM DRAWINGS

Drawn By: RPD  
Date: 11/14/14  
Scale: AS NOTED  
File Name: TN451/TT451.dwg  
Sheet

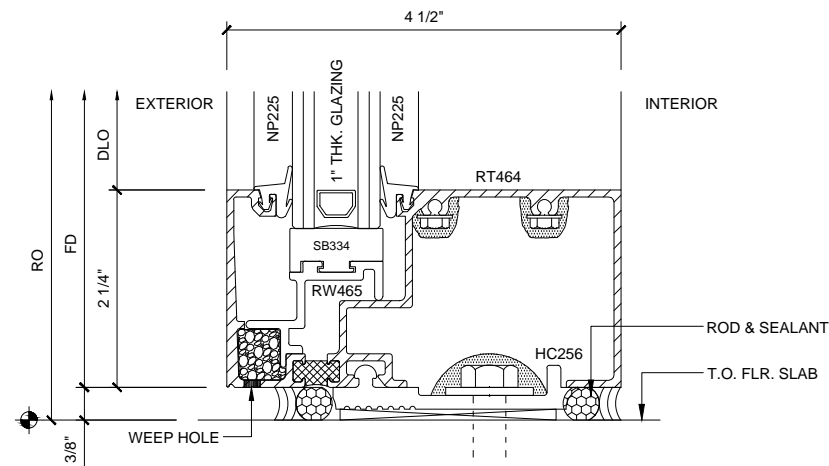
TT451.04



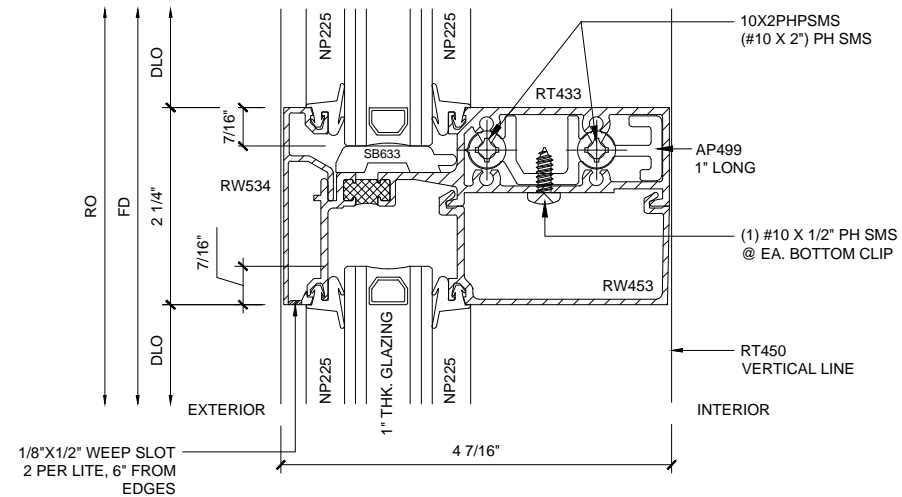
**HEAD SECTION 5**



**INT. HOR. SECTION 6**

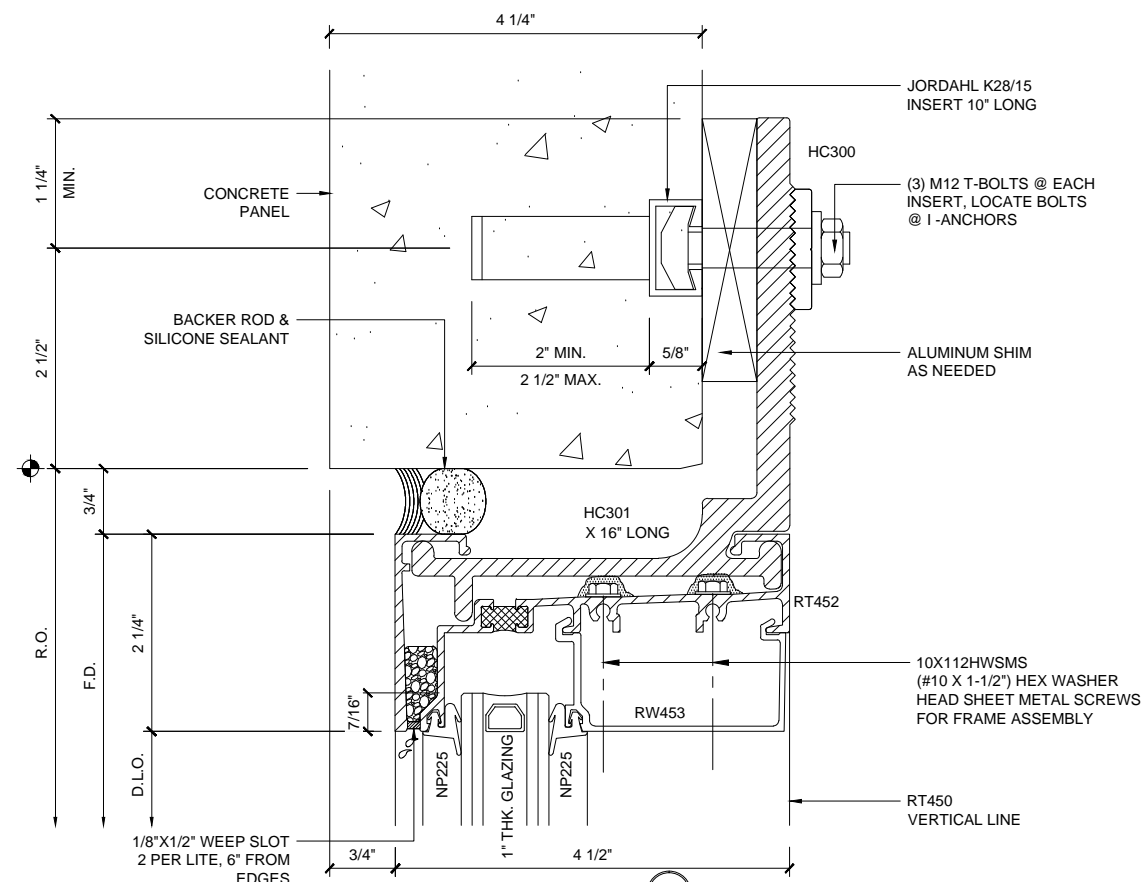


**SILL SECTION 7**

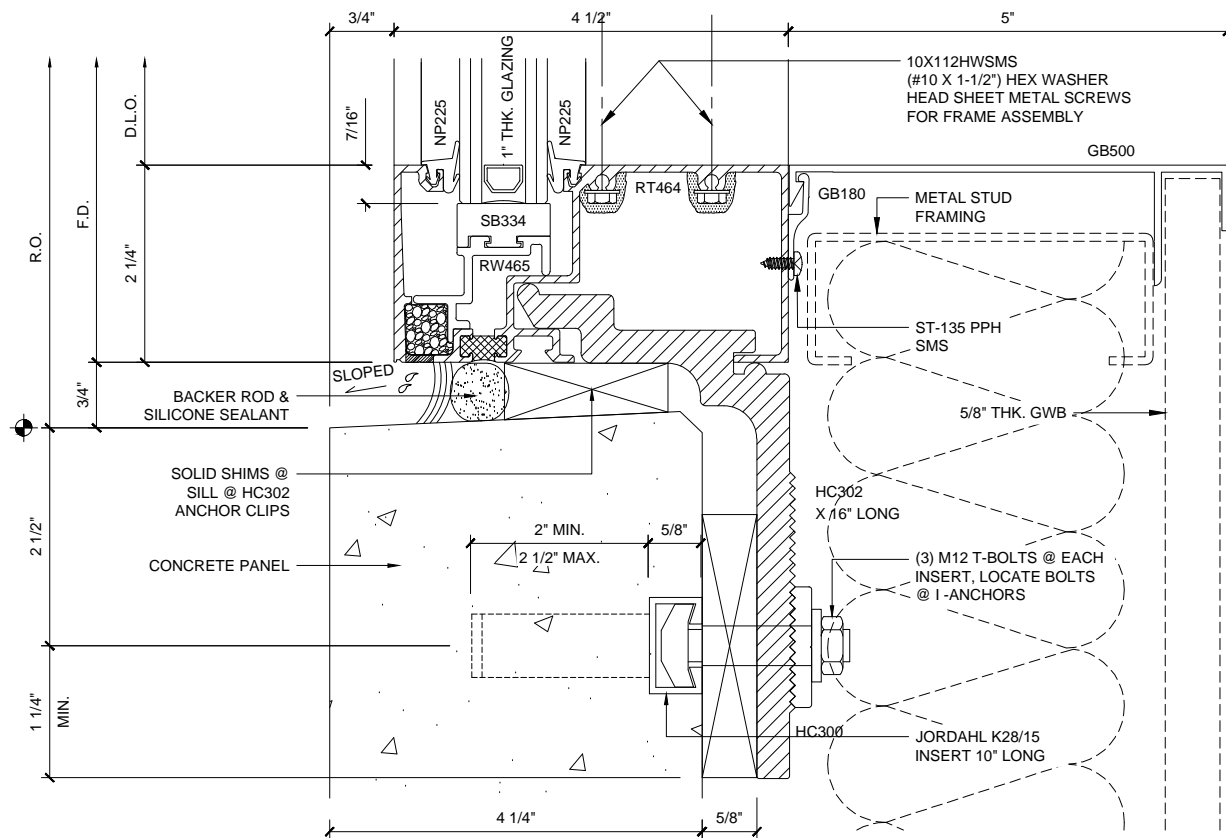


**INT. HOR. SECTION  
FOR STRUCTURAL  
SILICONE GLAZING 6A**  
ALTERNATE DETAIL

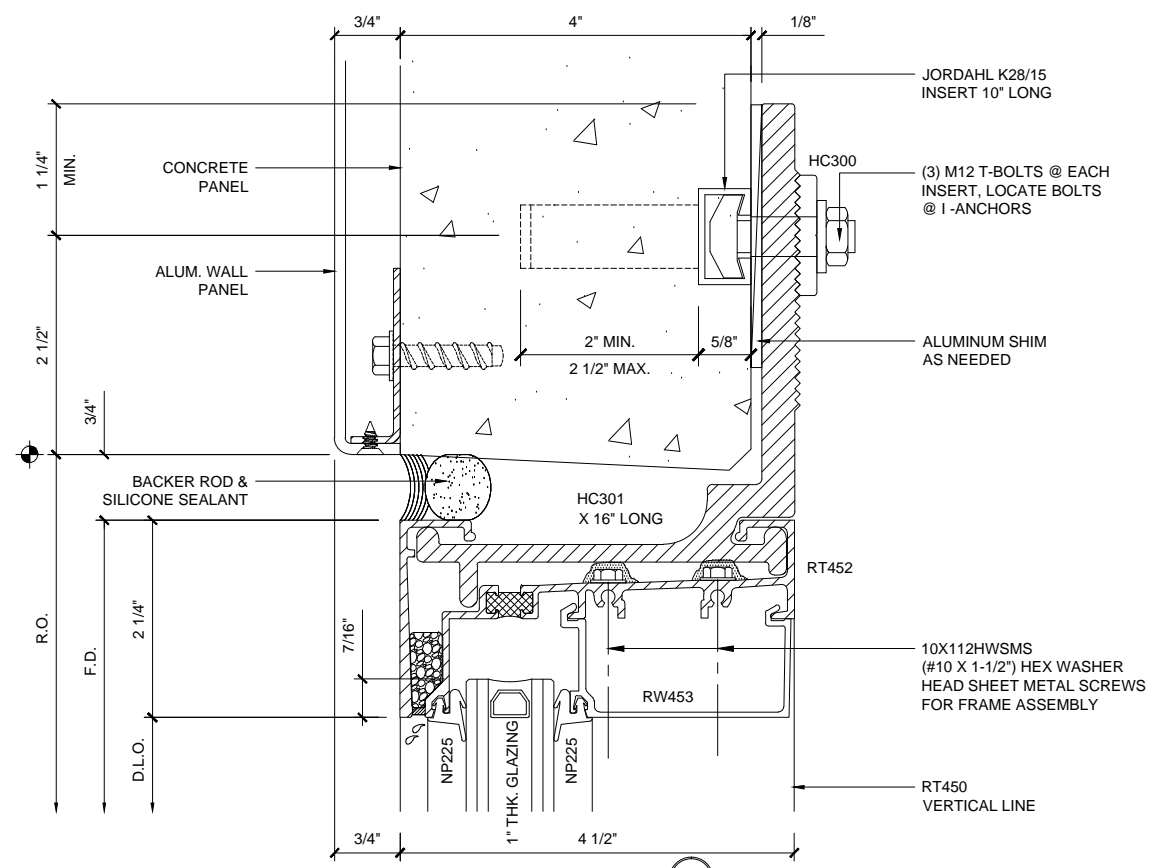
Revisions By:



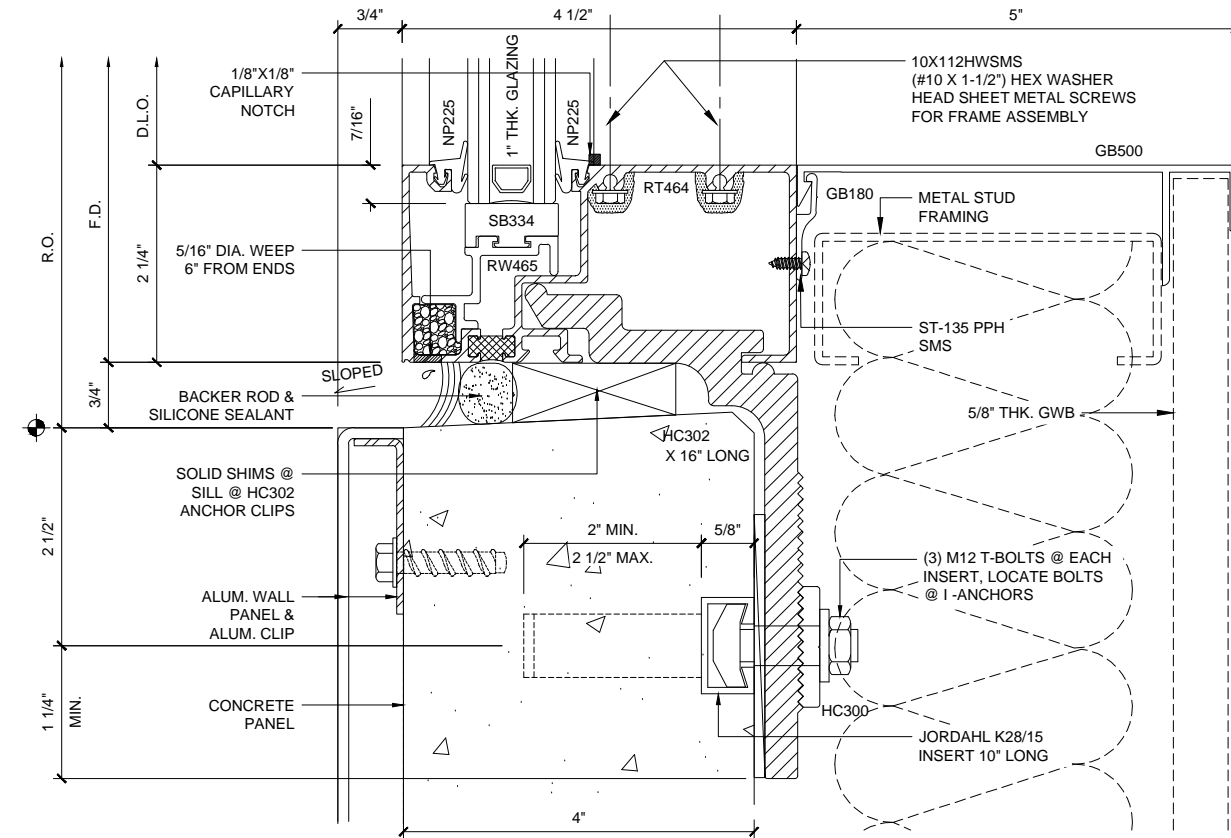
**HEAD SECTION 8**  
@ PRE-CAST PANEL



**SILL SECTION 9**  
@ PRE-CAST PANEL



**HEAD SECTION 8A**  
@ ALUM. WALL PANEL



**SILL SECTION 9A**  
@ ALUM. WALL PANEL

**WINDOW WALL SERIES TT451 TOP NOTCH SYSTEM**  
WITH THERMALLY BROKEN PARTS

1'-0" = 1'-0"

Revisions By:



C.R. LAURENCE CO. ARCHITECTURAL PRODUCTS  
2303 E. Vernon Avenue, Los Angeles, CA 90058-1897  
PH (800) 421-6144 FX 800-587-7501 www.crlaurence.com

Discription:

U.S. ALUMINUM  
TOP NOTCH SYSTEM  
SERIES TT451 / SERIES TT451  
SYSTEM DRAWINGS

Drawn By: RPD

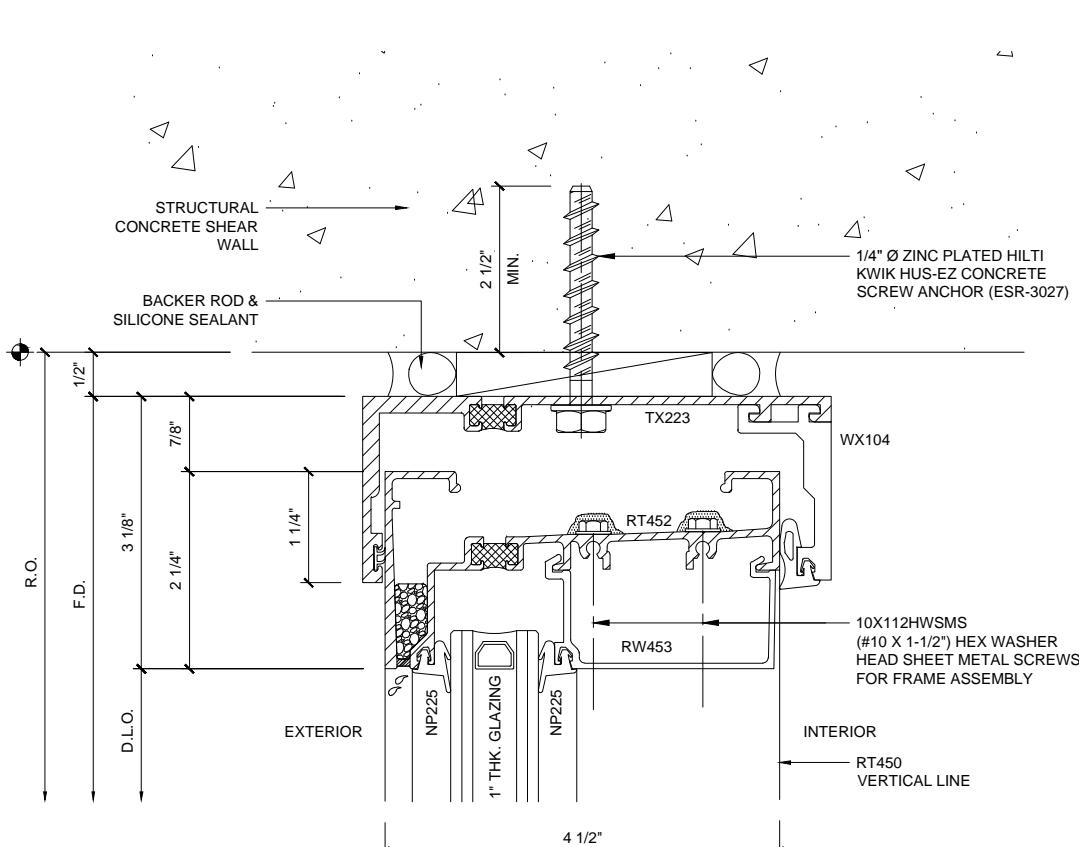
Date: 11/14/14

Scale: AS NOTED

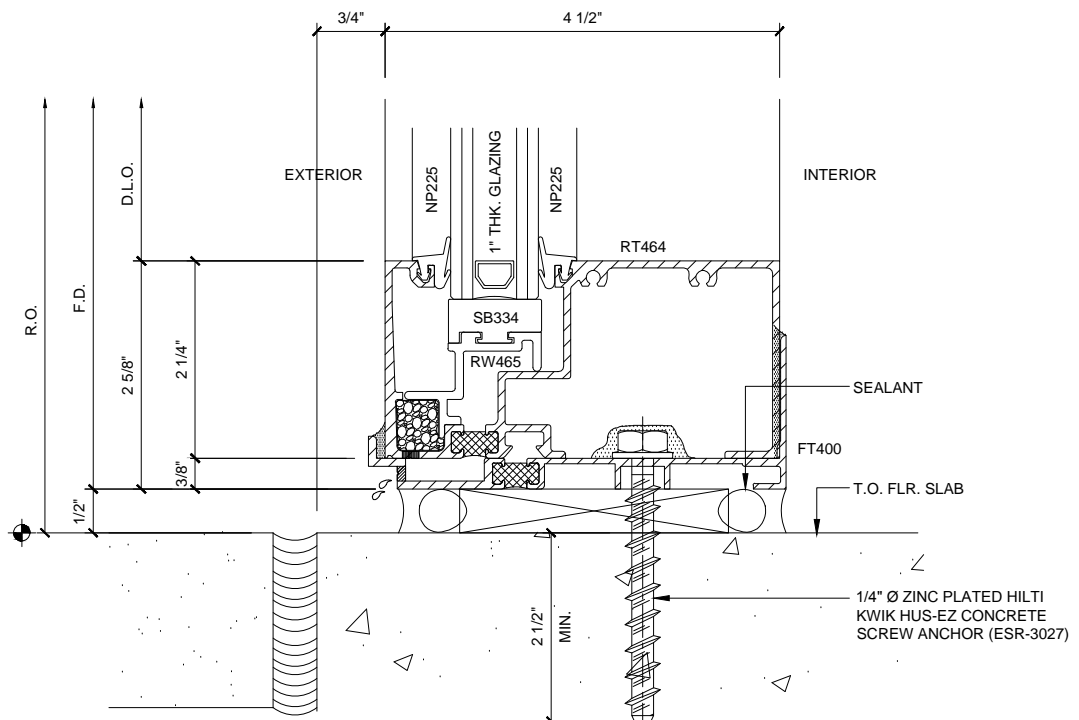
File Name: TT451/TT451.dwg

Sheet

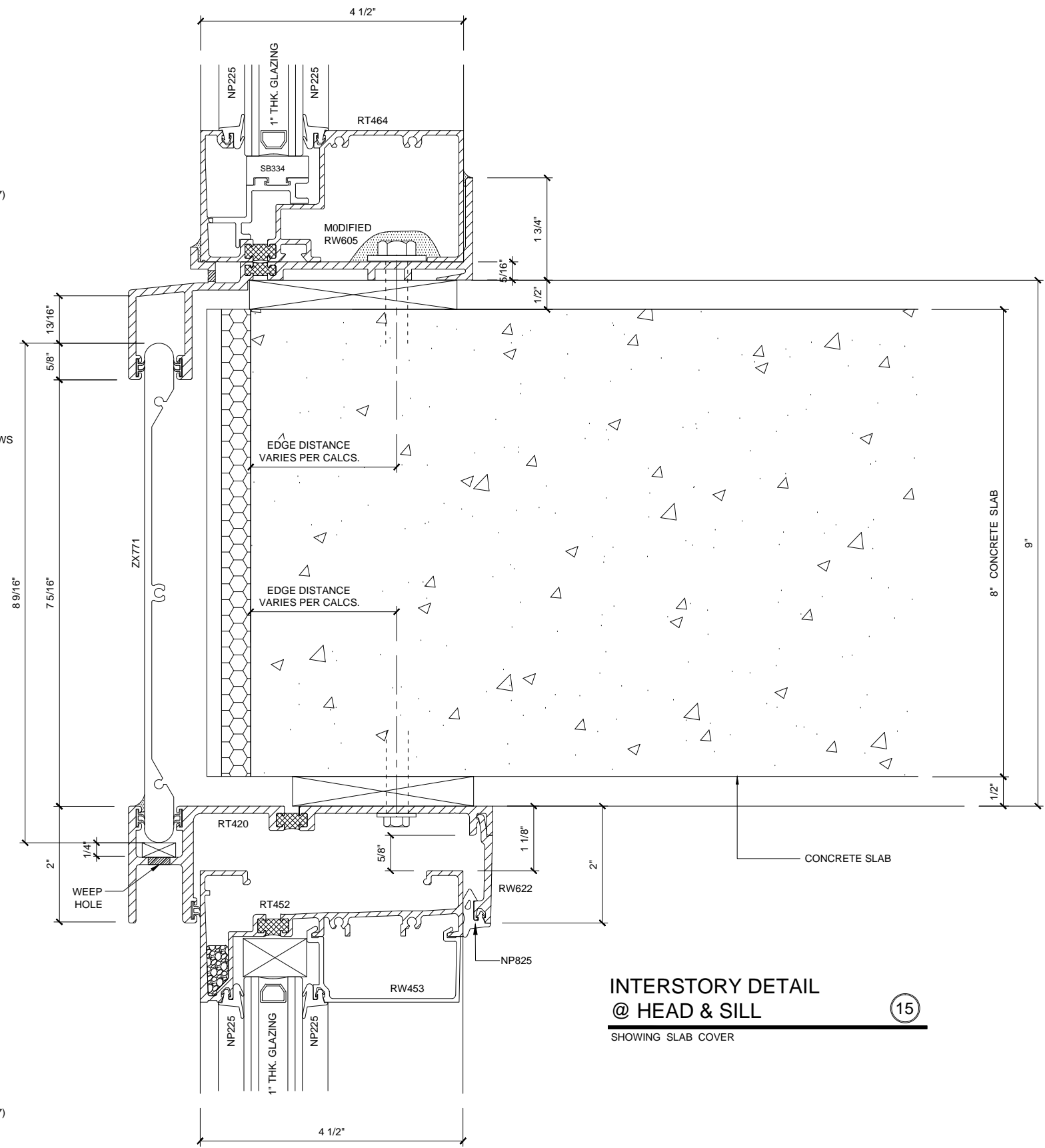
TT451.06



**HEAD SECTION 10**  
WITH RECEIVER




**SILL SECTION 11**  
AT BALCONIES



**INTERSTORY DETAIL @ HEAD & SILL 15**  
SHOWING SLAB COVER

**WINDOW WALL SERIES TT451 TOP NOTCH SYSTEM**  
WITH THERMALLY BROKEN PARTS  
1'-0" = 1'-0"

Revisions By:	
	
C.R. LAURENCE CO. ARCHITECTURAL PRODUCTS 2303 E. Vernon Avenue, Los Angeles, CA 90058-1897 PH (800) 421-6144 FX 800-587-7501 www.crlaurence.com	
Description: U.S. ALUMINUM TOP NOTCH SYSTEM SERIES TN451 / SERIES TT451 SYSTEM DRAWINGS	
Drawn By: RPD Date: 11/14/14 Scale: AS NOTED File Name: TN451/TT451.dwg Sheet	
<b>TT451.07</b>	