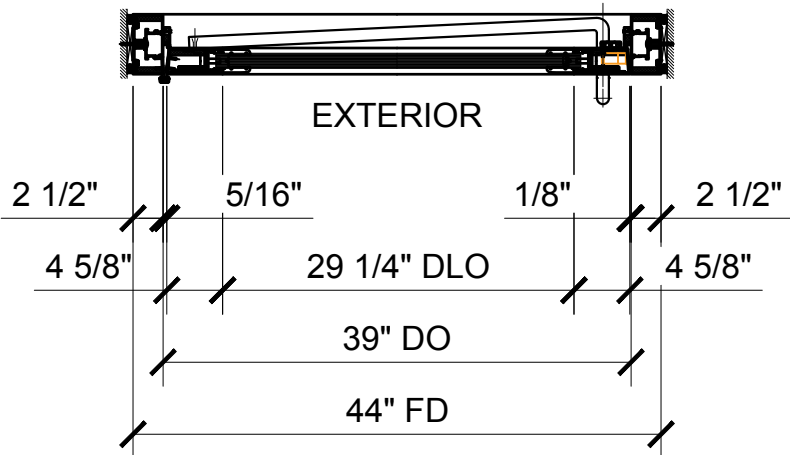
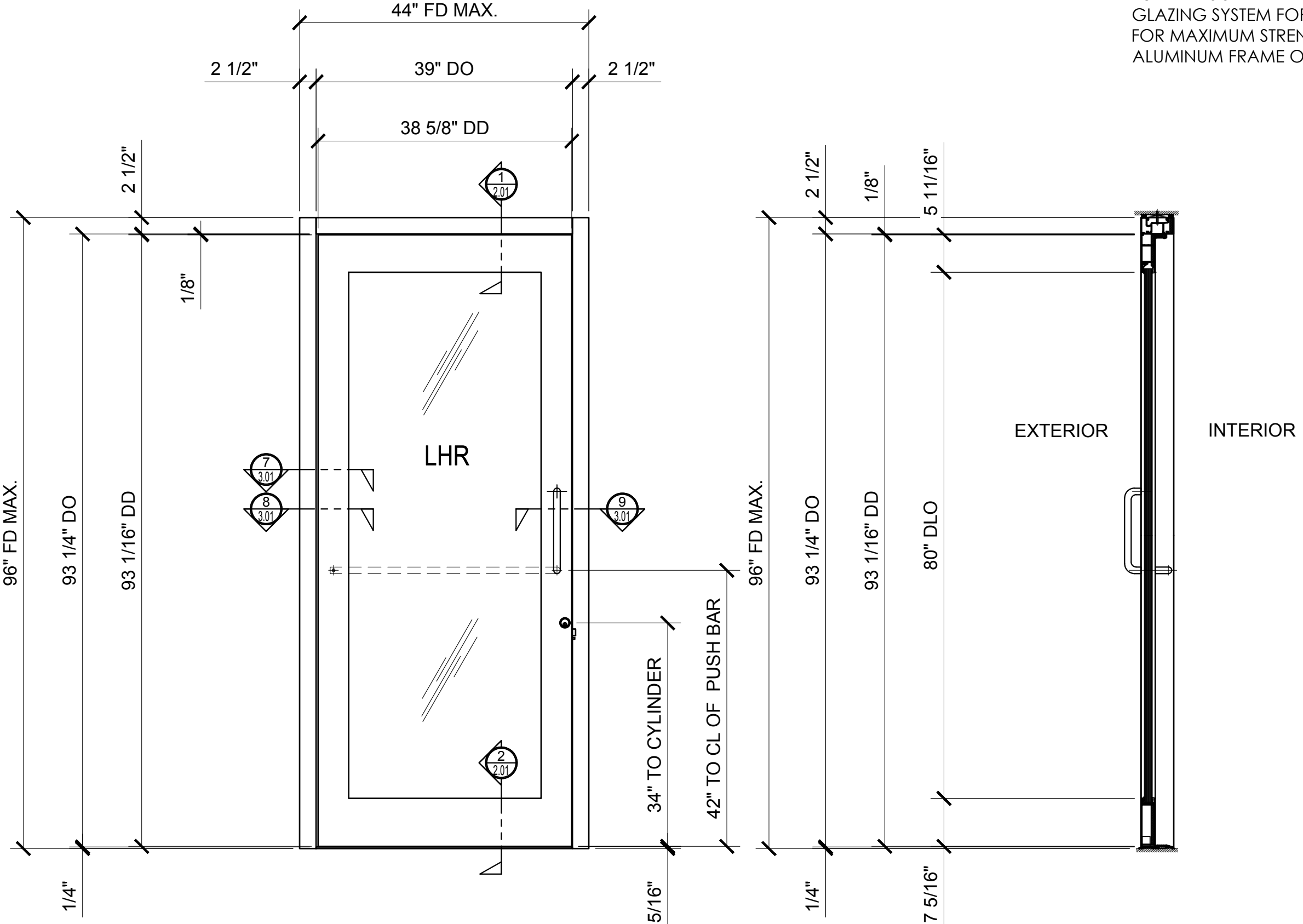
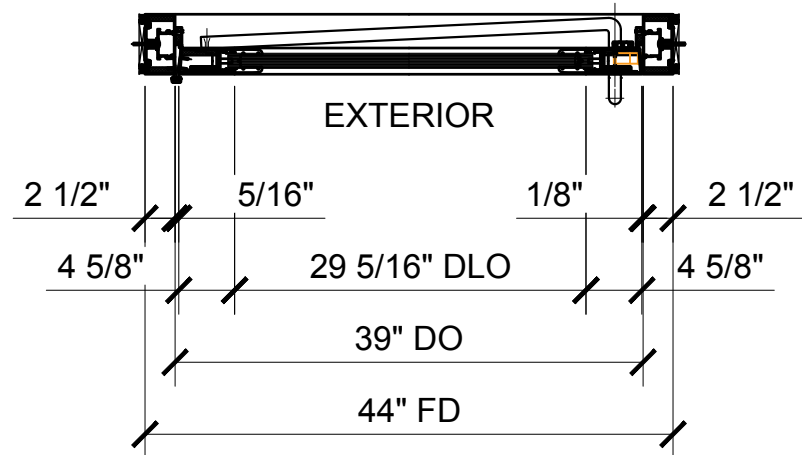
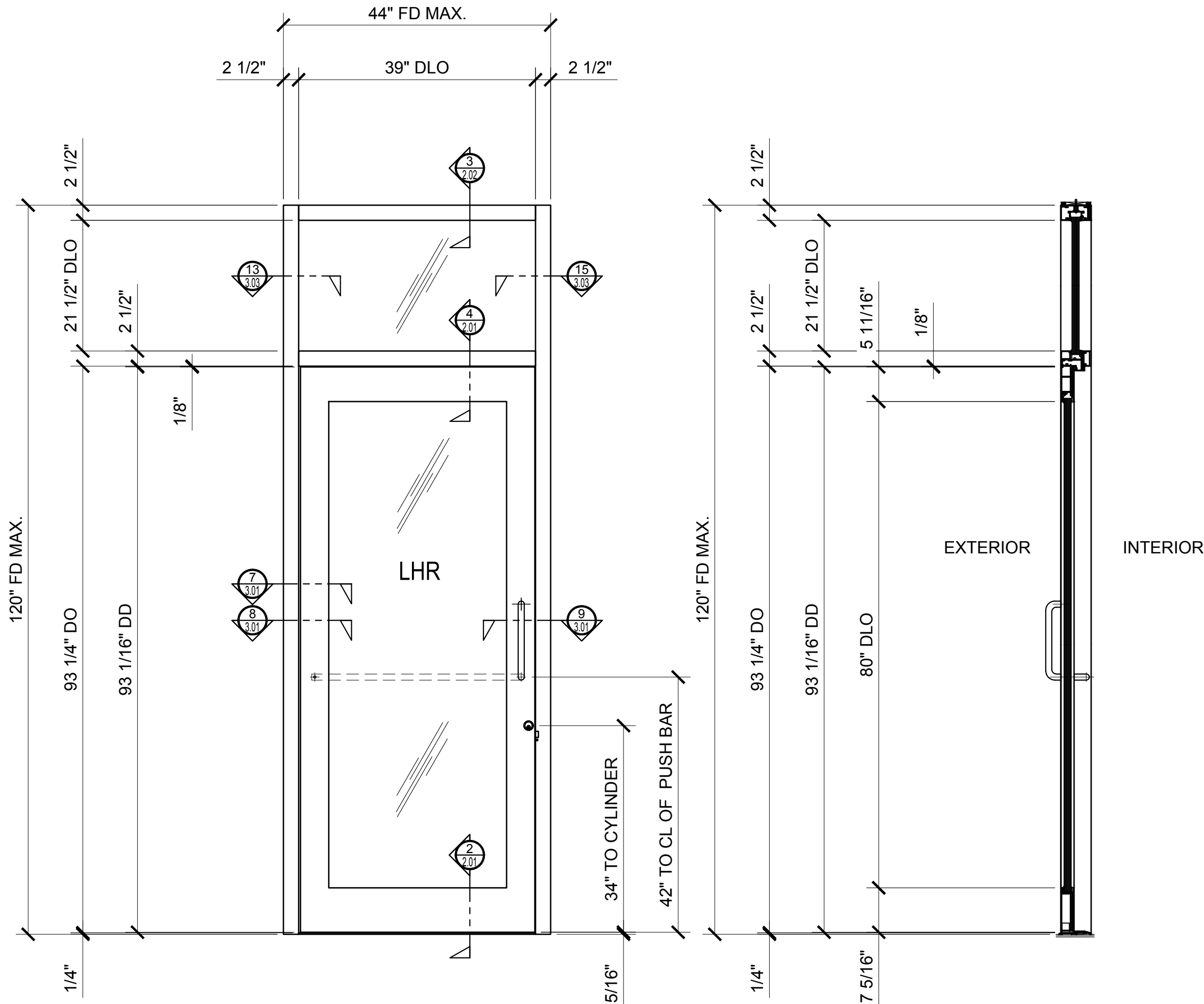




CRL ALUMINUM BULLET RESISTANT ENTRANCE DOORS AND FRAMES



DOOR & FRAME HEIGHT GUIDELINES
93-1/16" MAXIMUM DOOR HEIGHT
96" MAXIMUM FRAME HEIGHT
120" MAXIMUM FRAME W/TRANSOM AND/OR SIDELIGHT HEIGHT

DOOR & FRAME WIDTH GUIDELINES
38-3/4" MAXIMUM DOOR WIDTH FOR BH
38-19/32" MAXIMUM DOOR WIDTH FOR GH
44" MAXIMUM DOOR FRAME WIDTH / 62-1/2" MAXIMUM SIDELIGHT WIDTH

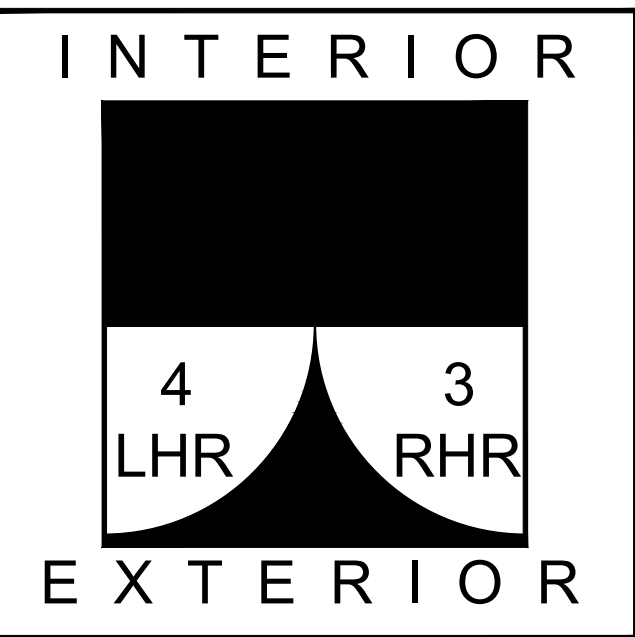
DOOR HARDWARE (SOME CATALOG NUMBERS VARY PER FINISH)
*CYLINDER LOCK, 1.5" BACKSET, ASA STRIKE, STAINLESS STEEL, CATALOG # DH22942
*GEAR HINGE OPTION: CONTINUOUS ALUMINUM GEARED HINGE, ANODIZED FINISH, CATALOG # DH299110096
*BUTT HINGE OPTION: 4.5"X4" BALL BEARING, NON-REMOVABLE PIN, STAINLESS STEEL, CATALOG # DH00911

- * AVAILABLE IN
ABRD1 - ALUMINUM LEVEL 1 BULLET RESISTANT DOOR &
ABRD3 - ALUMINUM LEVEL 3 BULLET RESISTANT DOOR
- * CONTINUOUS GEARED HINGE OR BUTT HINGES AVAILABLE
- * LEVEL 1 & LEVEL 3 GLAZING PROTECTION AVAILABLE
 - * LEVEL 1 GLAZING:
1-1/4" B.R. ACRYLIC NO SAR COAT
1-1/4" B.R. ACRYLIC WITH SAR COAT
1-3/16" B.R. GLASS
 - * LEVEL 3 GLAZING:
1-1/4" B.R. LEXGARD
1-3/16" GLASS CLAD POLYCARBONATE (GCP TESTED PER N.I.J. III A STANDARD, EXCEEDS UL752 LEVEL 3)

- * MATERIALS: FRAME - SATIN ANODIZED, BRONZE ANODIZED, OR KYNAR PAINTED
- * FINISHES: FRAME - SATIN ANODIZED, BRONZE ANODIZED, OR KYNAR PAINTED

CRL BULLET RESISTANT ENTRANCE SYSTEMS ARE ENGINEERED AND SUCCESSFULLY TESTED TO WITHSTAND LEVEL 1 OR 3 HANDGUN PROJECTILES AS DEFINED BY UL752 BALLISTIC STANDARDS. THESE UNIQUE ENTRANCE SYSTEMS FEATURE SCREW SPLINE ASSEMBLY FOR PANEL ERECTION, AND BULLET RESISTANT FIBERGLASS REINFORCED MULLIONS. SINGLE GLASS STOP GLAZING SYSTEM FOR CLEAN SIGHTLINES. WELDED CORNER CONSTRUCTION FOR MAXIMUM STRENGTH. ALUMINUM FRAME OFFERS LEVEL 3 PROTECTION. MADE IN THE U.S.A.

DOOR SWING CHART



"INDUSTRY STANDARD" DOOR STYLES AND SWINGING DOOR PATTERNS

THERE ARE THREE BASIC DOOR STYLES TYPICALLY REFERRED TO THROUGHOUT THE INDUSTRY APPLICABLE TO THE CRL ALUMINUM BULLET RESISTANT DOOR SYSTEMS, BY IDENTIFYING YOUR BASIC DOOR STYLE AND SWING, IT WILL HELP MAKE CLEAR WHAT YOUR INTENTIONS ARE FOR THE PARTICULAR PROJECT. FOR MORE INFORMATION, PLEASE CONTACT OUR TRANSACTION HARDWARE DEPARTMENT AT (800) 421-6144 IN THE U.S., (877) 421-6144 IN CANADA, OR (323) 588-1281 INTERNATIONAL. ASK FOR EXT. 7760. YOU CAN SEND E-MAIL TO: transaction@crlaurence.com

Revisions By:

C.R. LAURENCE CO. ARCHITECTURAL PRODUCTS
2503 E. Verrion Avenue, Los Angeles, CA 90058-1897
PH (800) 421-6144 FX 800-587-7301 www.crlaurence.com

Discription:

CRL BULLET RESISTANT SERIES
ALUMINUM BULLET
RESISTANT DOORS
FOR 1-1/4" & 1-3/16" GLASS

Drawn By: TG

Date: 08/15/17

Scale: AS NOTED

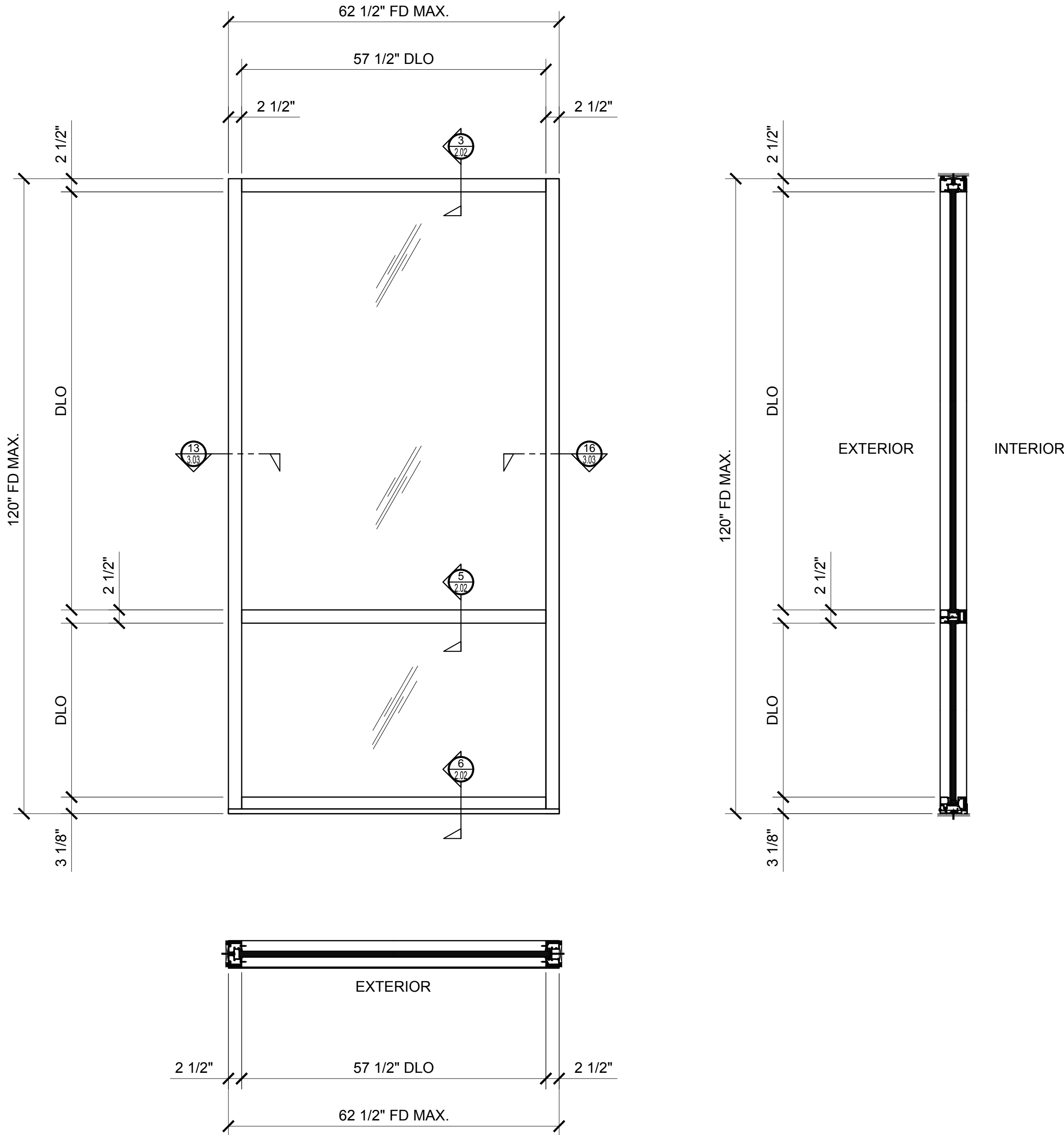
File Name: AluminumBulletResistantDoor.com

Sheet

1.01



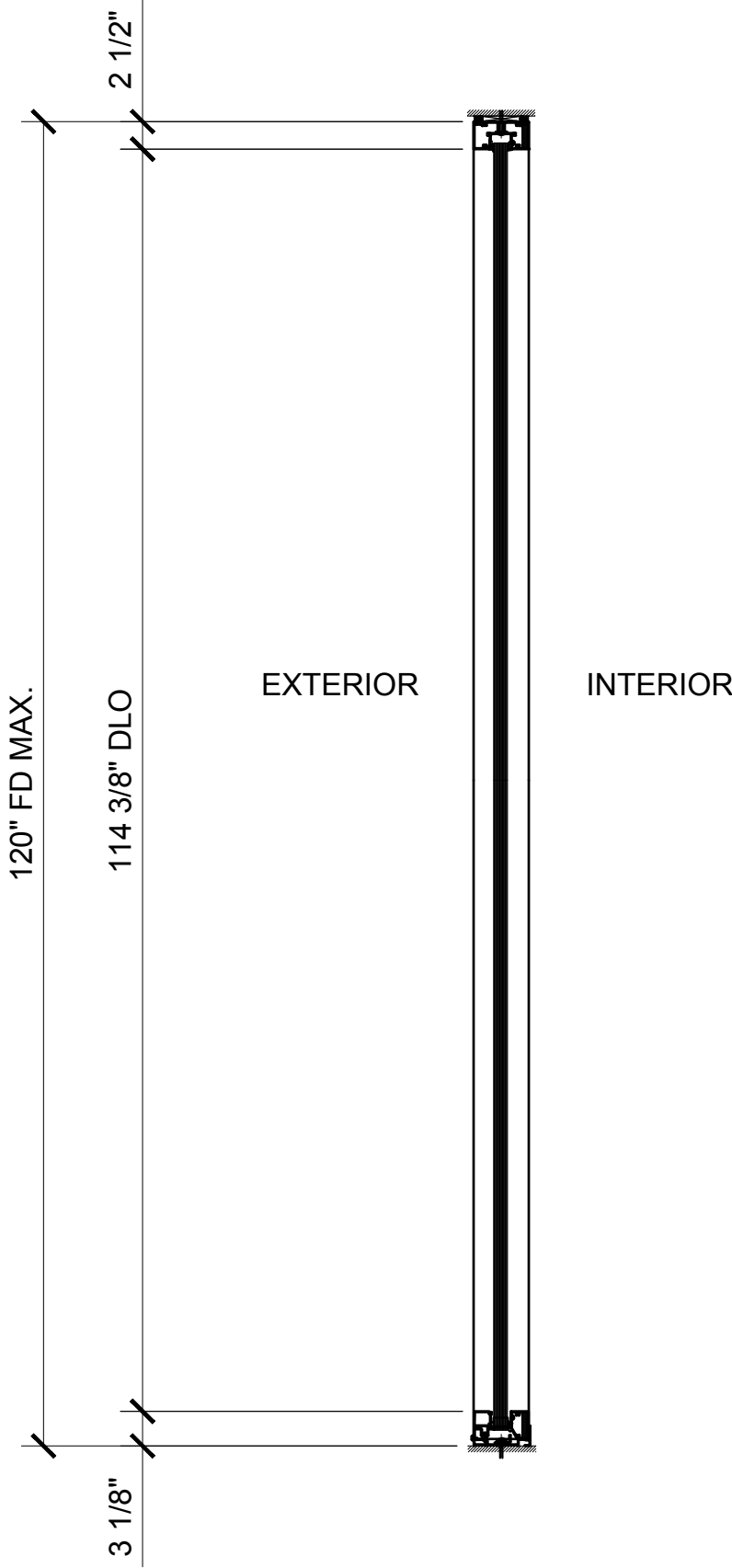
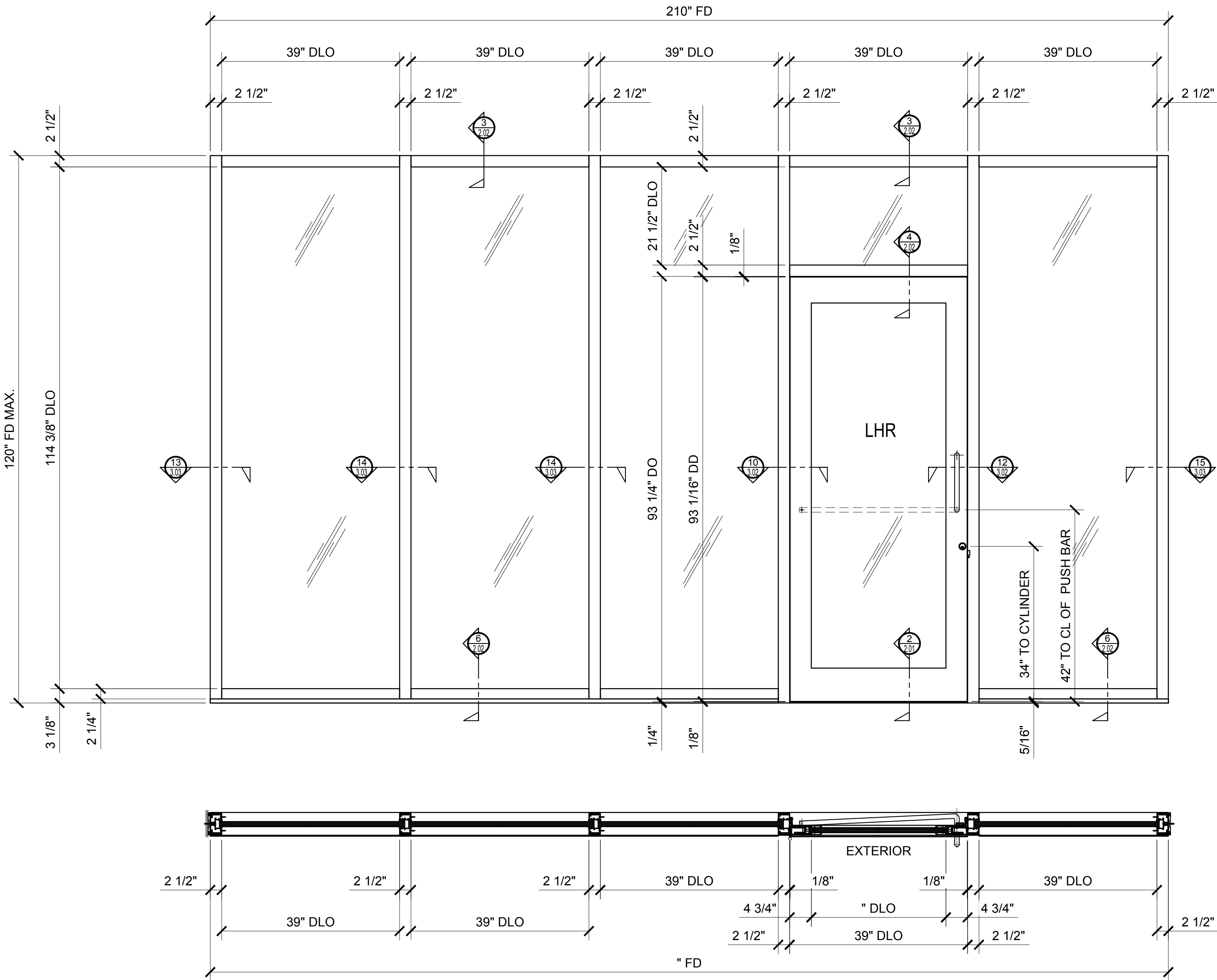
CRL ALUMINUM BULLET RESISTANT
ENTRANCE DOORS AND FRAMES



Revisions By:	
<div><div><div>CRL</div><div>ALUMINUM</div></div><div><div>C.R. LAURENCE CO. ARCHITECTURAL PRODUCTS</div><div>2503 E. Vernon Avenue, Los Angeles, CA 90058-1897</div><div>PH (800) 421-6144 FX 800-597-7301 www.crlaurence.com</div></div></div>	
Description: CRL BULLET RESISTANT SERIES ALUMINUM BULLET RESISTANT DOORS FOR 1-1/4" & 1-3/16" GLASS	
Drawn By: TG	
Date: 08/15/17	
Scale: AS NOTED	
File Name:	
AluminumBulletResistantDoor.com	
Sheet	
1.02	



CRL ALUMINUM BULLET RESISTANT
ENTRANCE DOORS AND FRAMES



Revisions By:

C.R. LAURENCE CO. ARCHITECTURAL PRODUCTS
2503 E. Vernon Avenue, Los Angeles, CA 90058-1897
PH (800) 421-6144 FX 800-597-7301 www.crlaurence.com

Discription:

CRL BULLET RESISTANT SERIES
ALUMINUM BULLET
RESISTANT DOORS
FOR 1-1/4" & 1-3/16" GLASS

Drawn By: TG

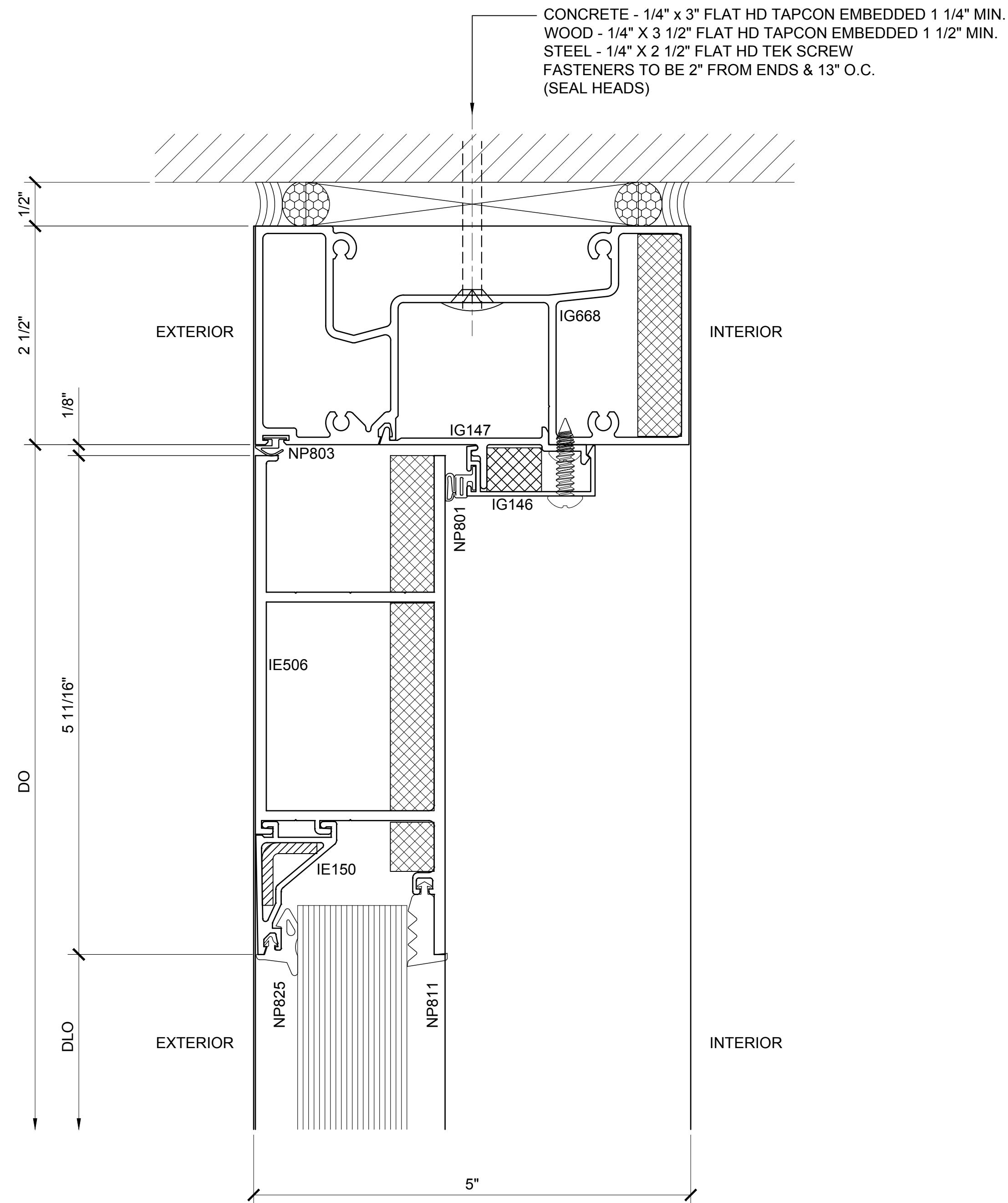
Date: 08/15/17

Scale: AS NOTED

File Name: AluminumBulletResistantDoor.com

Sheet

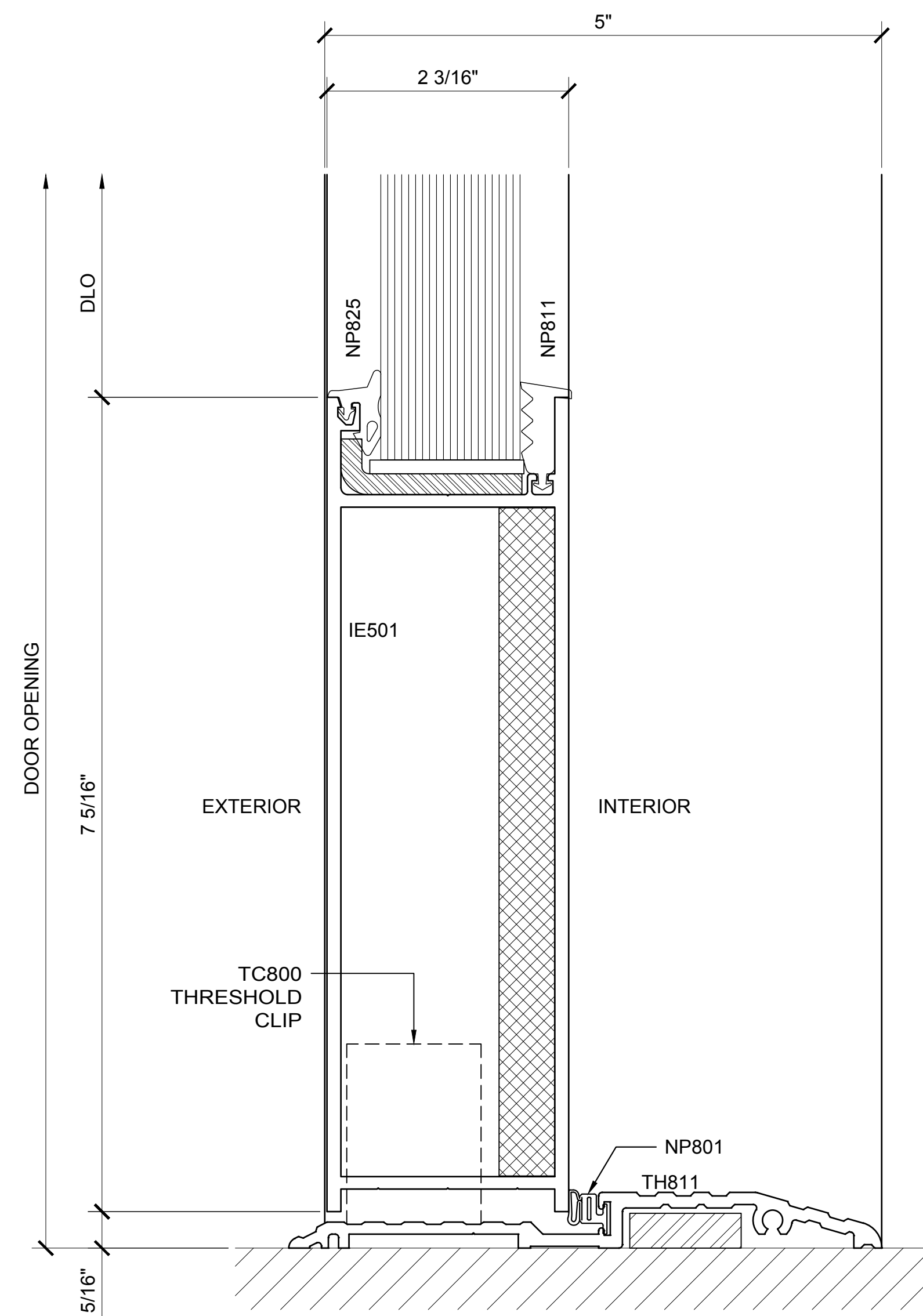
1.03



① SECTION DETAIL AT HEADER FOR UP & OVER FRAME

ARCH REF: NONE

1'-0"=1'-0"

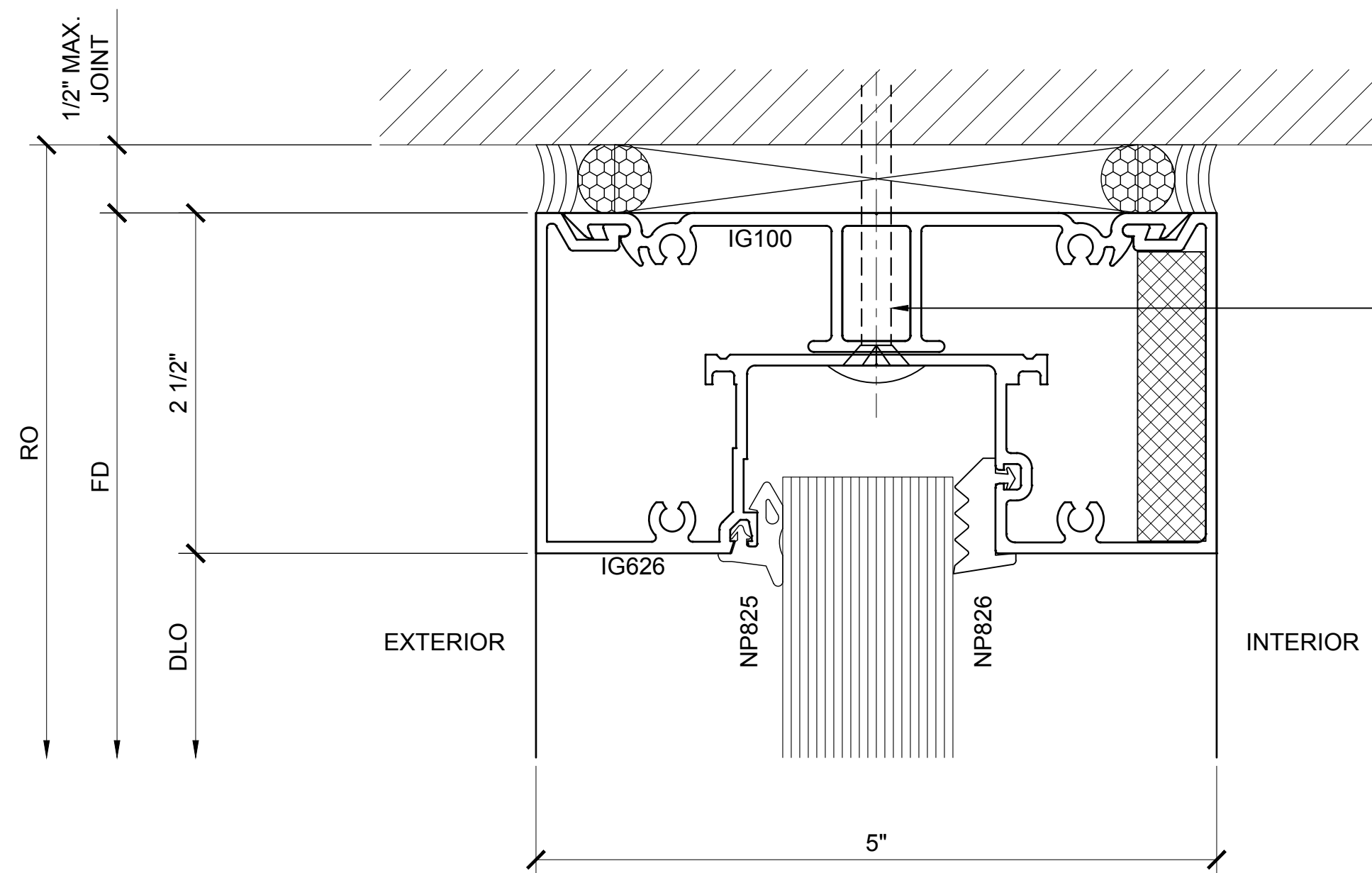


② SECTION DETAIL AT AIR RESISTANT THRESHOLD

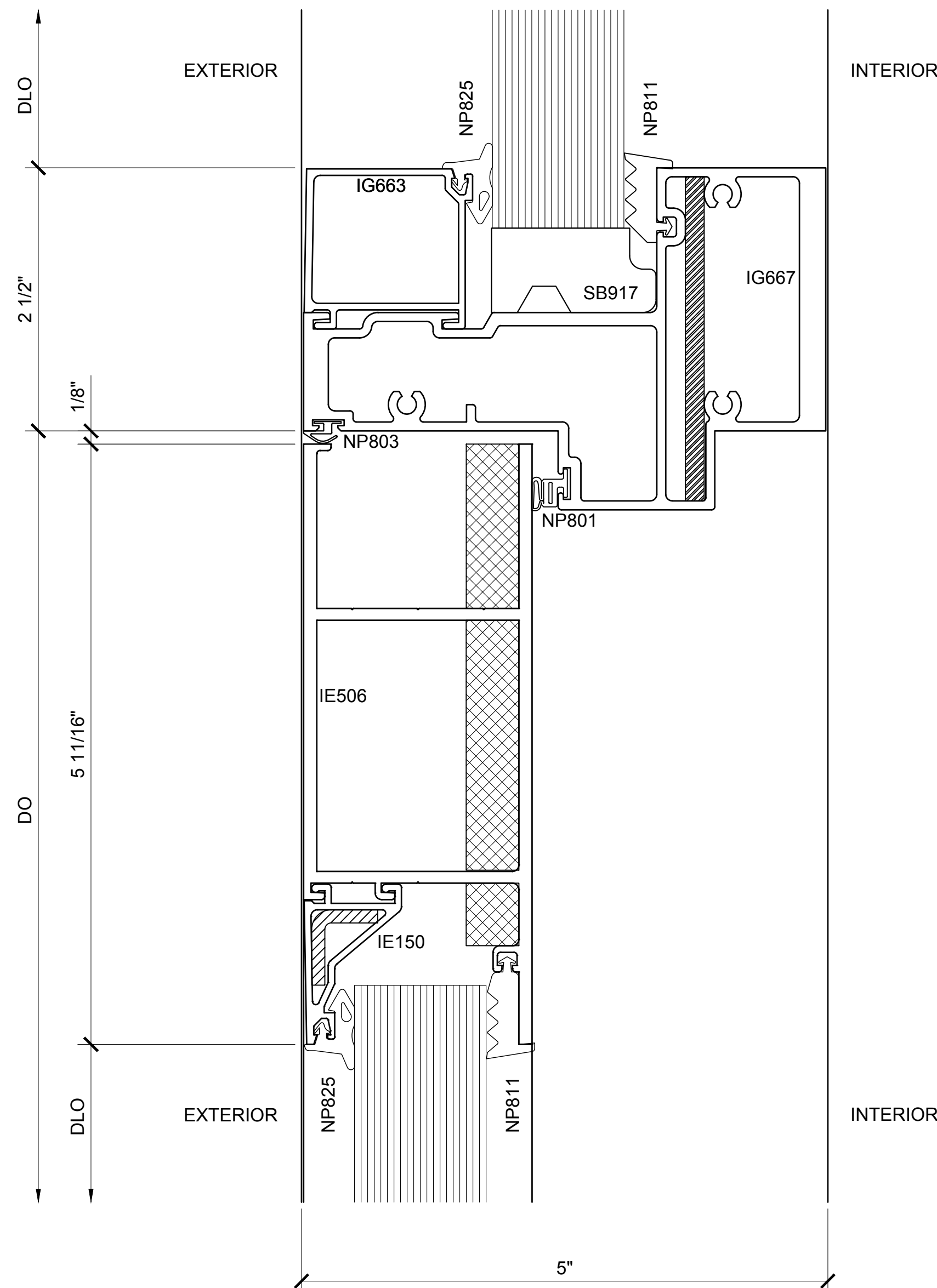
ARCH REF: NONE

1'-0"=1'-0"

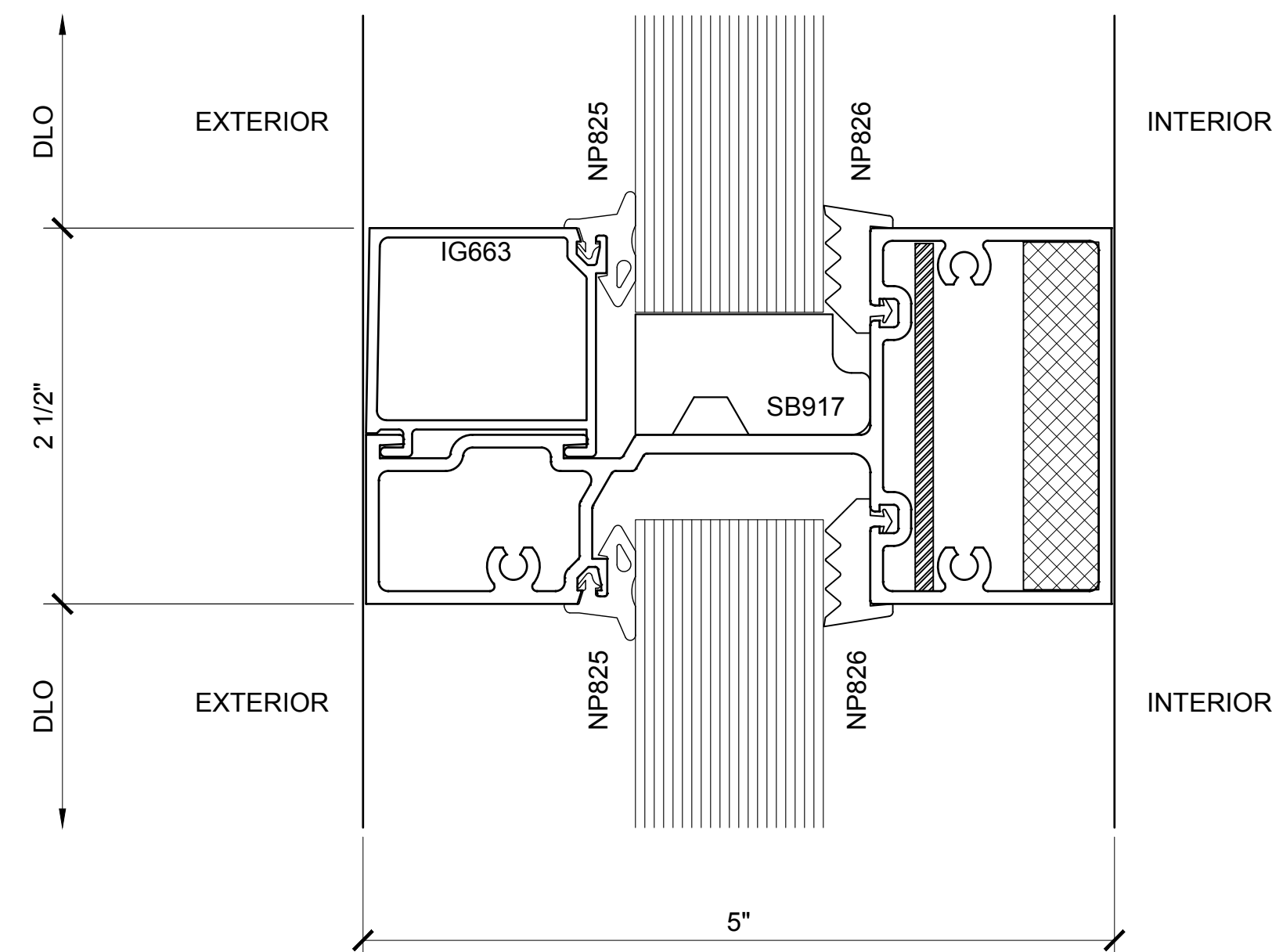
Revisions By:



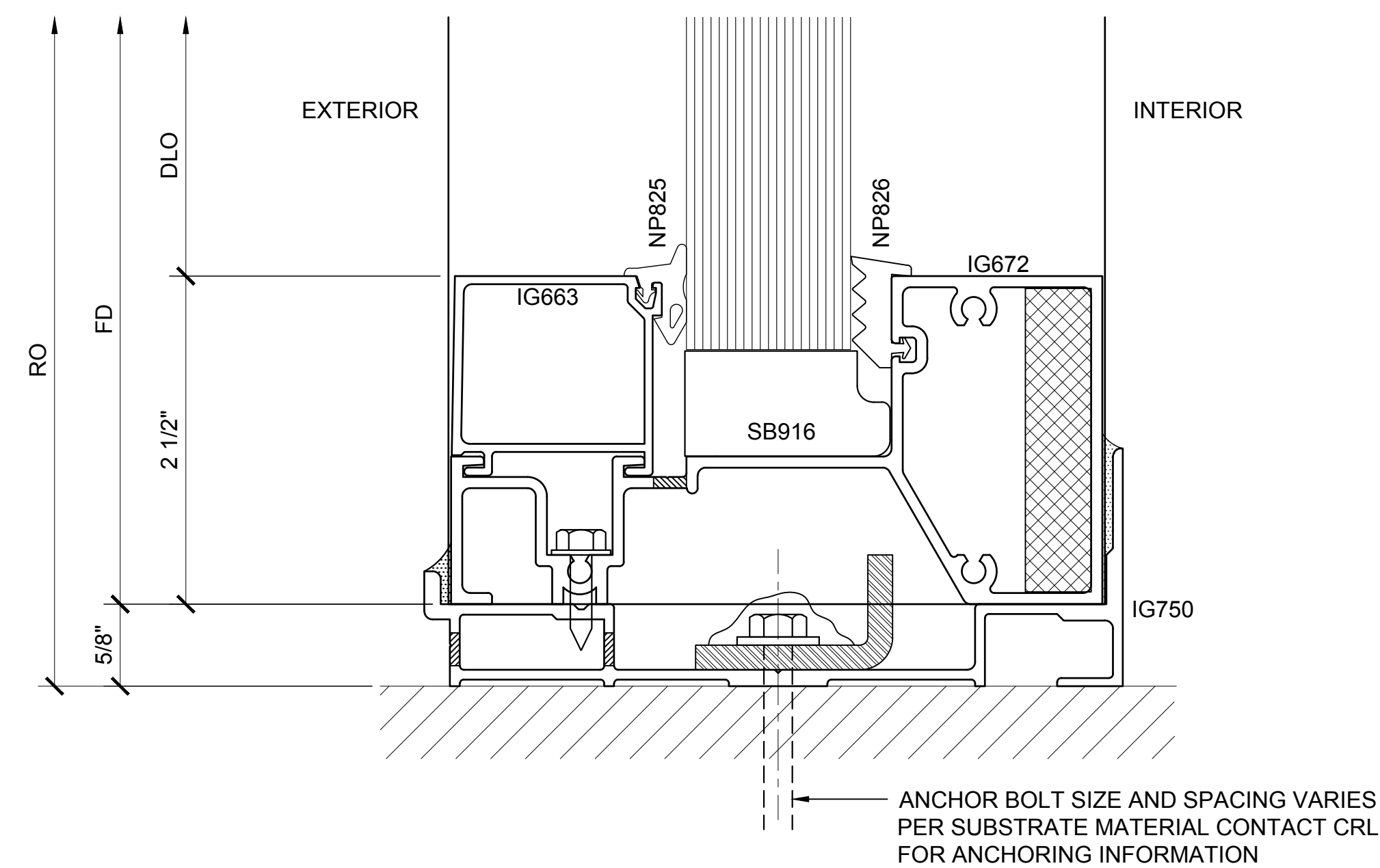
③ SECTION DETAIL AT TRANSOM HEAD
ARCH REF: NONE 1'-0"=1'-0"



④ SECTION DETAIL AT HEADER FOR TRANSOM FRAME
ARCH REF: NONE 1'-0"=1'-0"



⑤ SECTION DETAIL AT INTERMEDIATE MULLION
ARCH REF: NONE 1'-0"=1'-0"



⑥ SECTION DETAIL AT SILL
ARCH REF: NONE 1'-0"=1'-0"

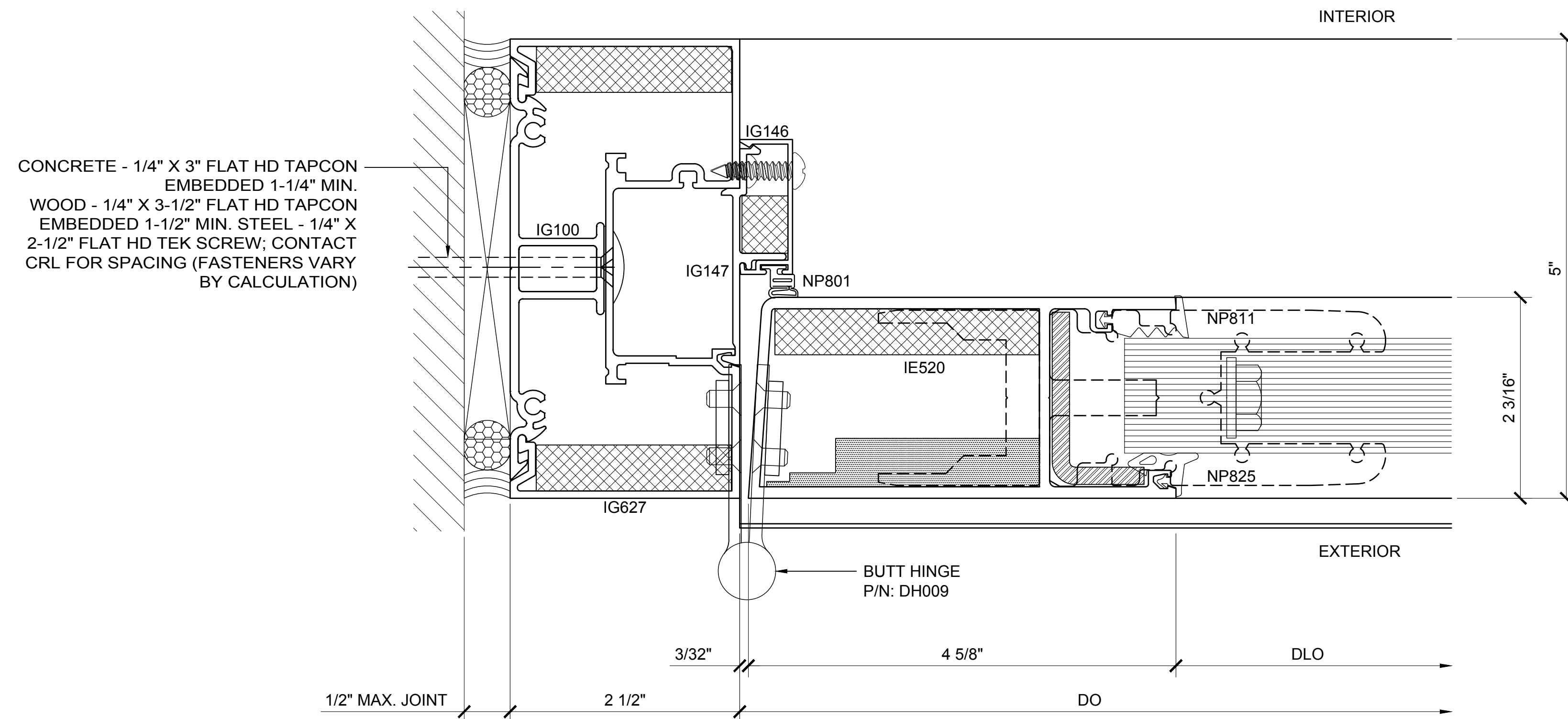
Revisions By:

CRL
ALUMINUM
C.R. LAURENCE CO. ARCHITECTURAL PRODUCTS
2503 E. Vernon Avenue, Los Angeles, CA 90058-1897
PH (800) 421-6144 FX 800-587-7301 www.crlaurence.com

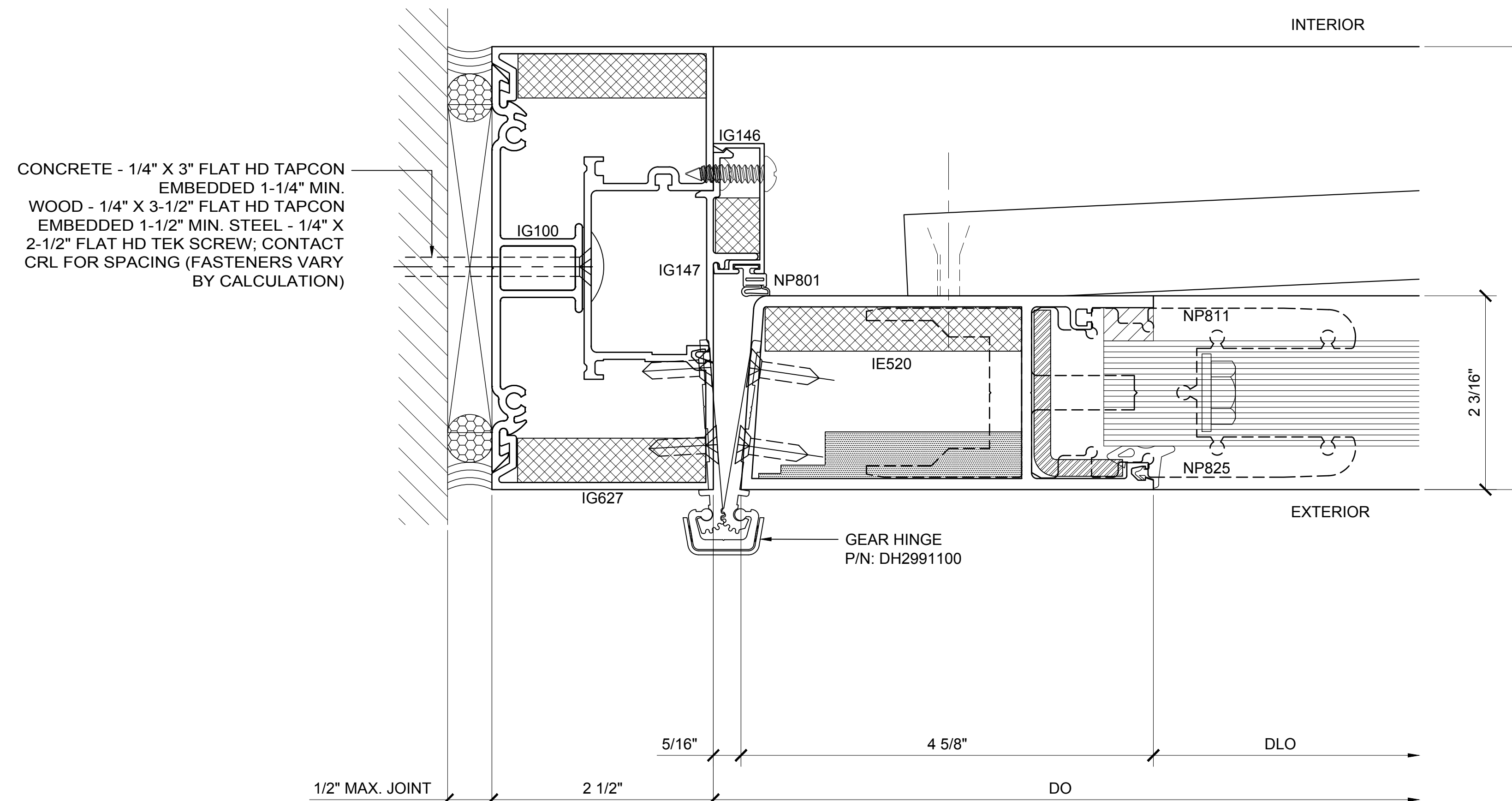
Description:
CRL BULLET RESISTANT SERIES
ALUMINUM BULLET
RESISTANT DOORS
FOR 1-1/4" & 1-3/16" GLASS

Drawn By: TG
Date: 08/15/17
Scale: AS NOTED
File Name:
AluminumBulletResistantDoor.cdm

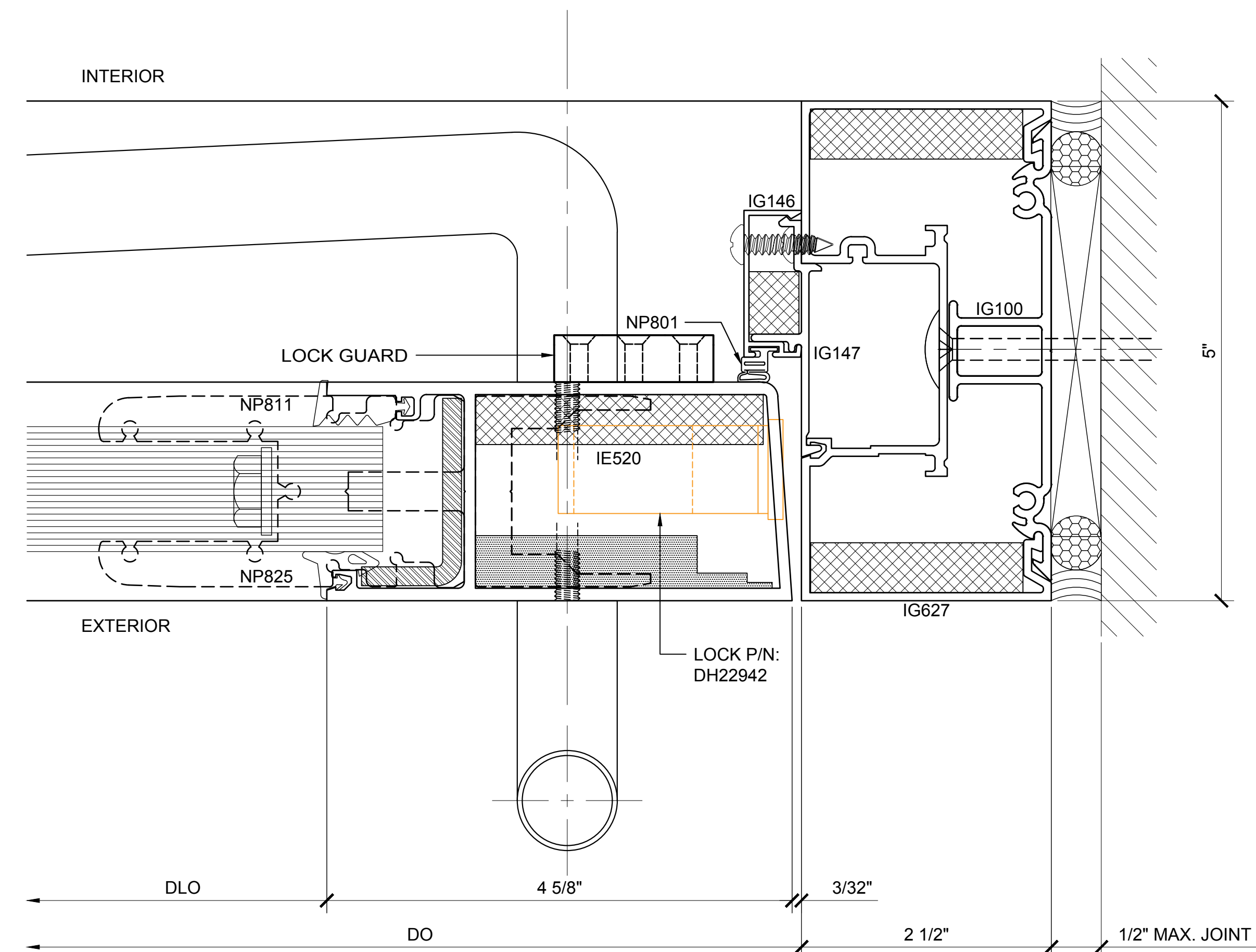
Sheet



7 HINGE DOOR JAMB DETAIL WITH BUTT HINGE
 ARCH REF: NONE 1'-0"=1'-0"

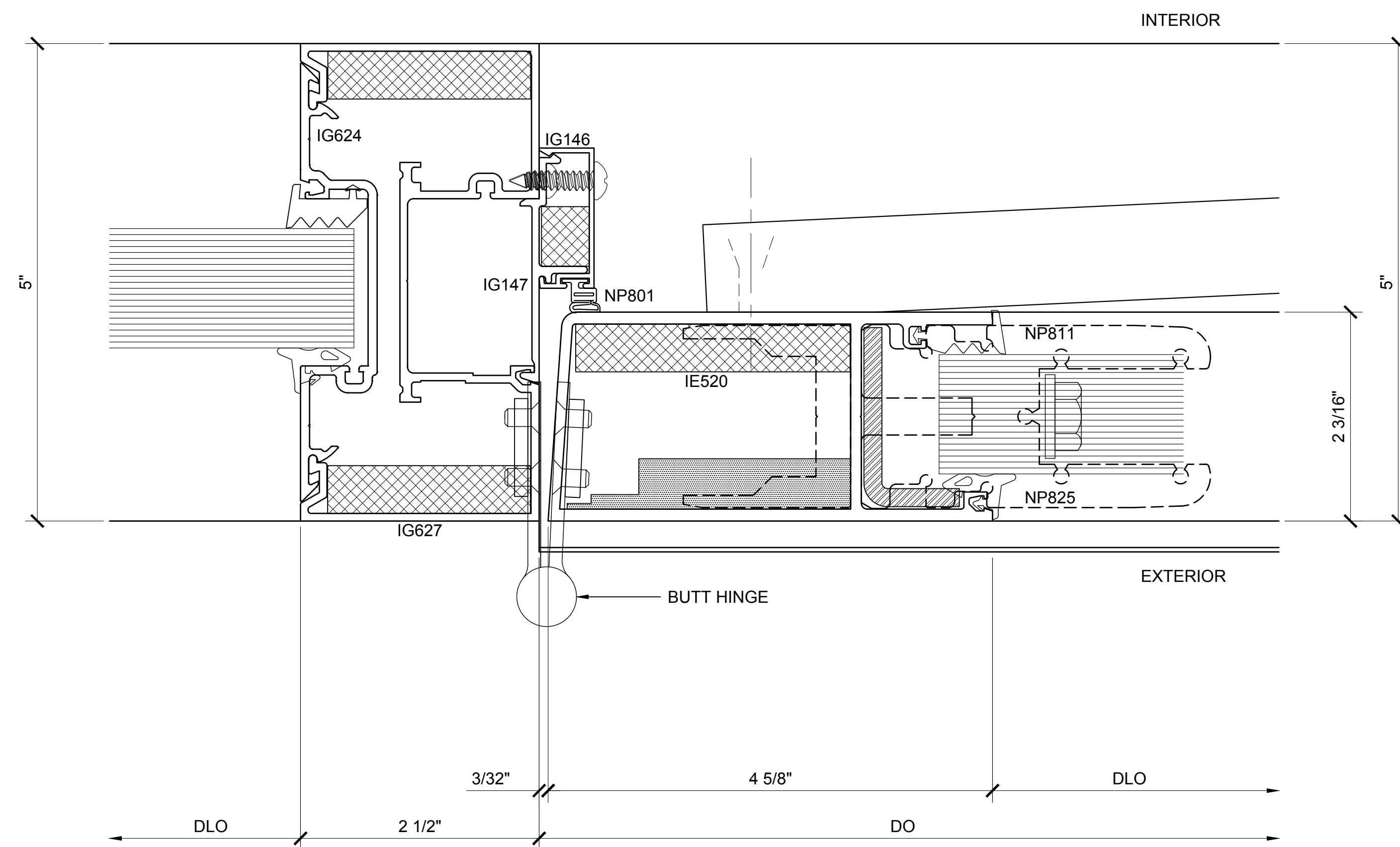


8 HINGE DOOR JAMB DETAIL WITH GEAR HINGE
 ARCH REF: NONE 1'-0"=1'-0"

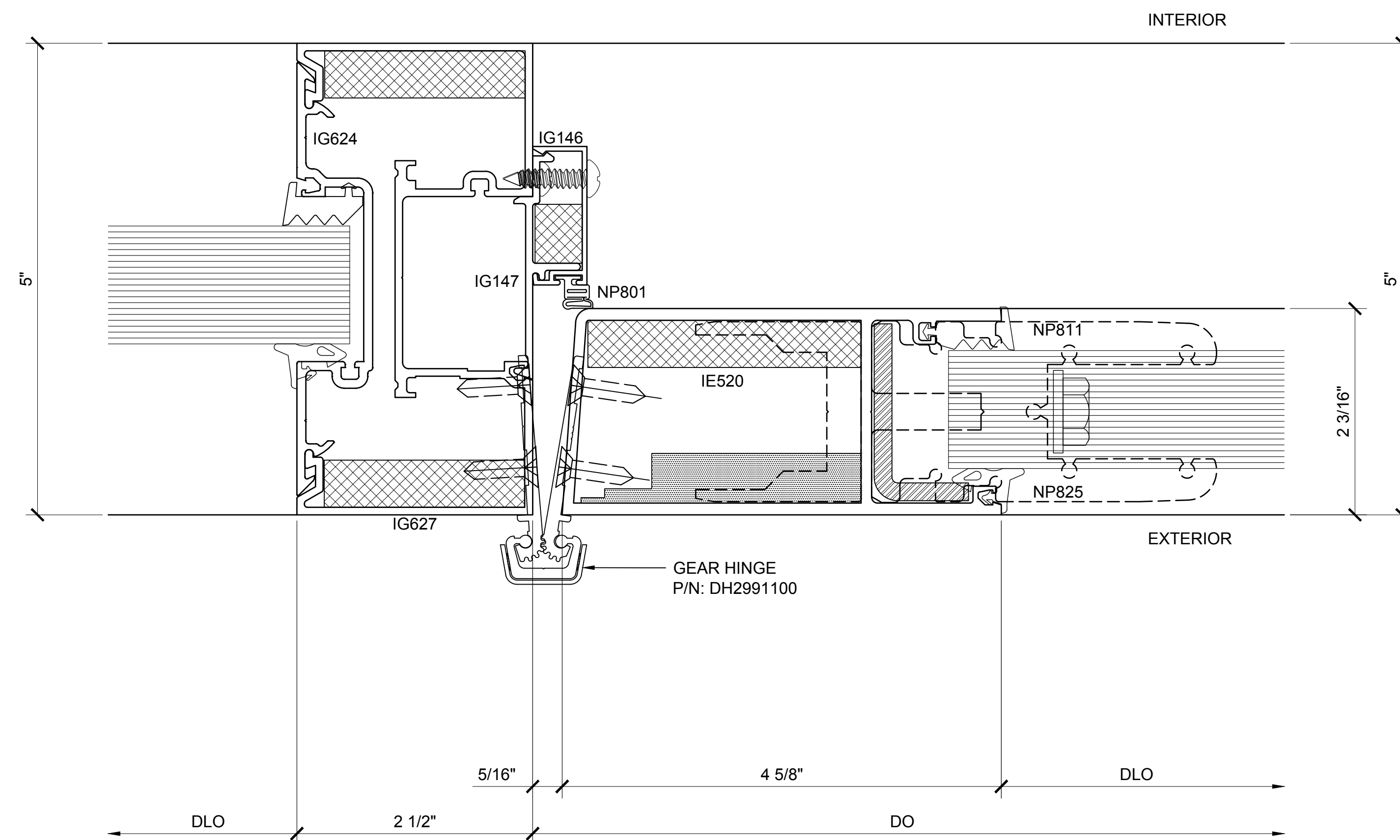


9 LEAD / LOCK DOOR JAMB DETAIL
 ARCH REF: NONE 1'-0"=1'-0"

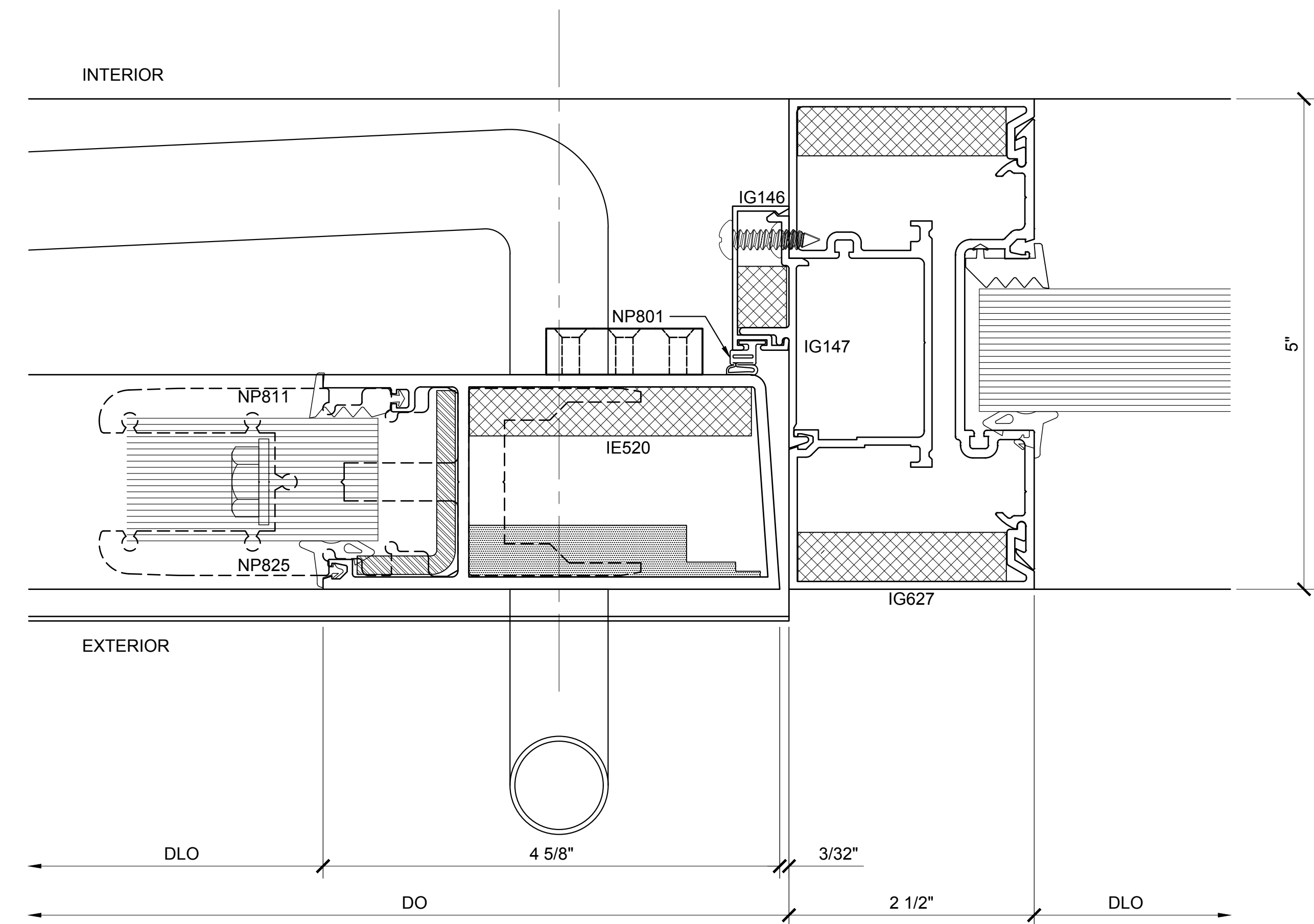
Revisions By:



10 HINGE DOOR JAMB DETAIL WITH BUTT HINGE
 ARCH REF: NONE 1'-0"=1'-0"



11 HINGE DOOR JAMB DETAIL WITH GEAR HINGE
 ARCH REF: NONE 1'-0"=1'-0"



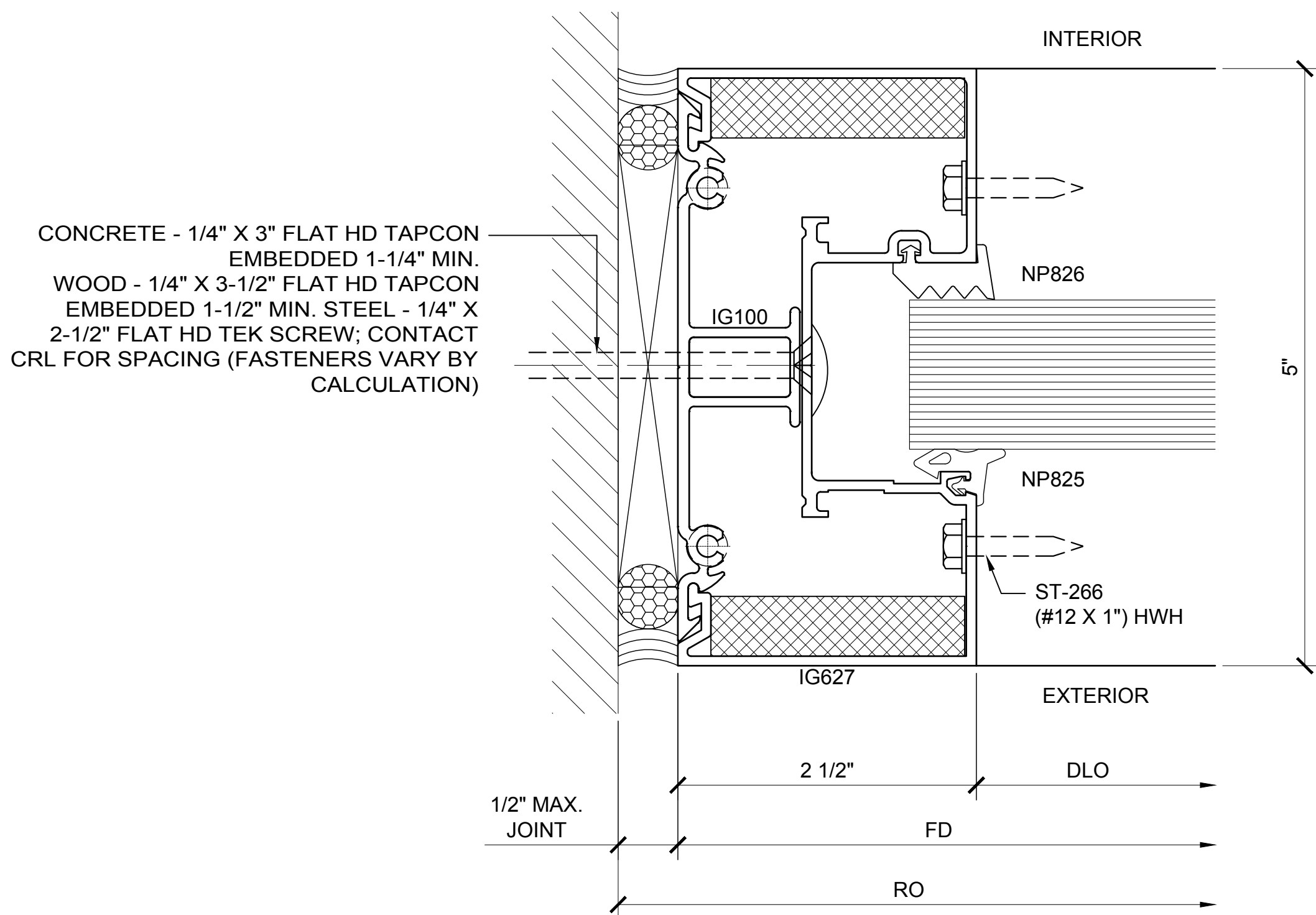
12 LEAD / LOCK DOOR JAMB DETAIL
 ARCH REF: NONE 1'-0"=1'-0"

Revisions By:

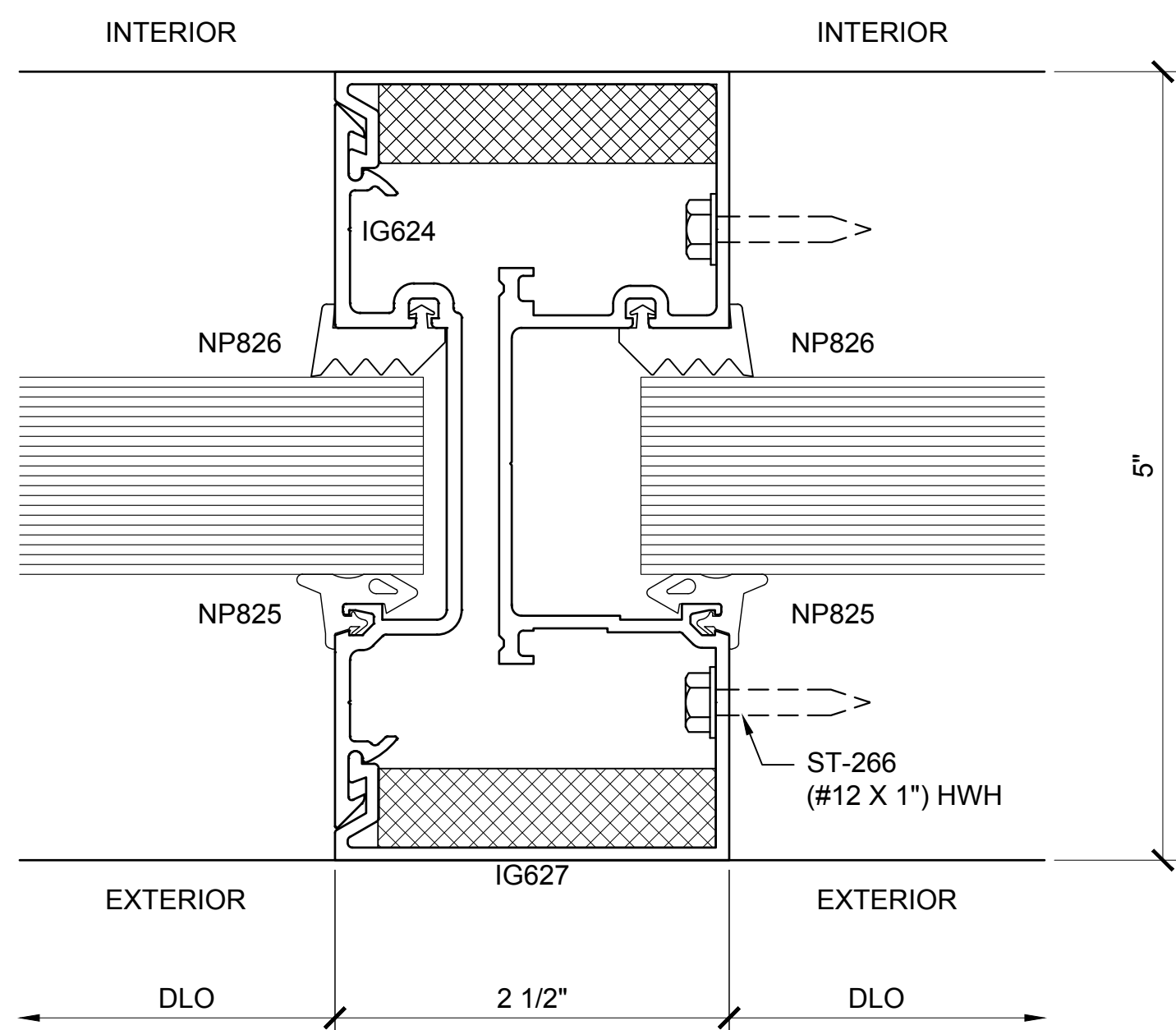
Discription:
 CRL BULLET RESISTANT SERIES
 ALUMINUM BULLET
 RESISTANT DOORS
 FOR 1-1/4" & 1-3/16" GLASS

Drawn By: TG
 Date: 08/15/17
 Scale: AS NOTED
 File Name:
 AluminumBulletResistantDoor.cdm

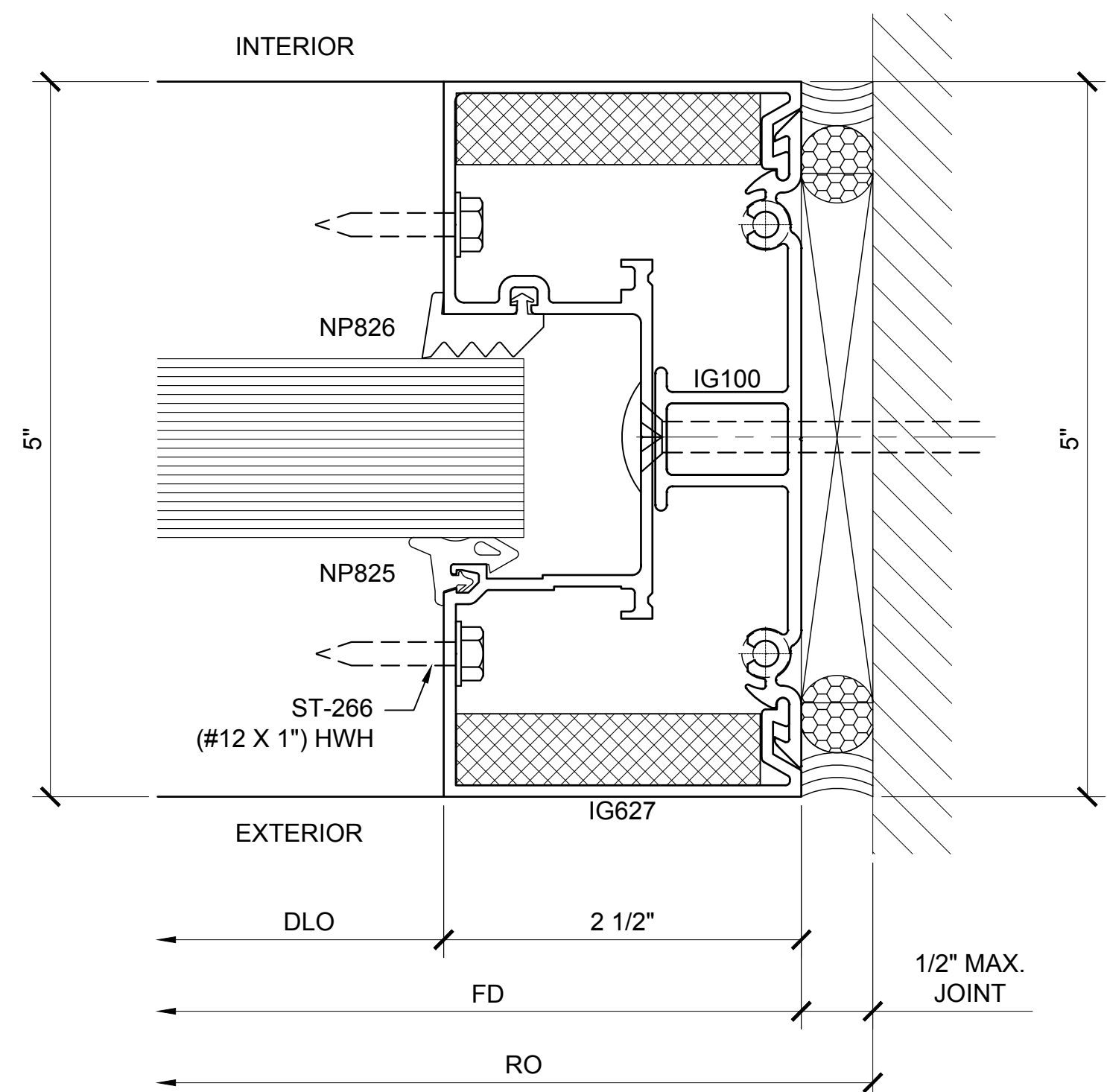
Sheet



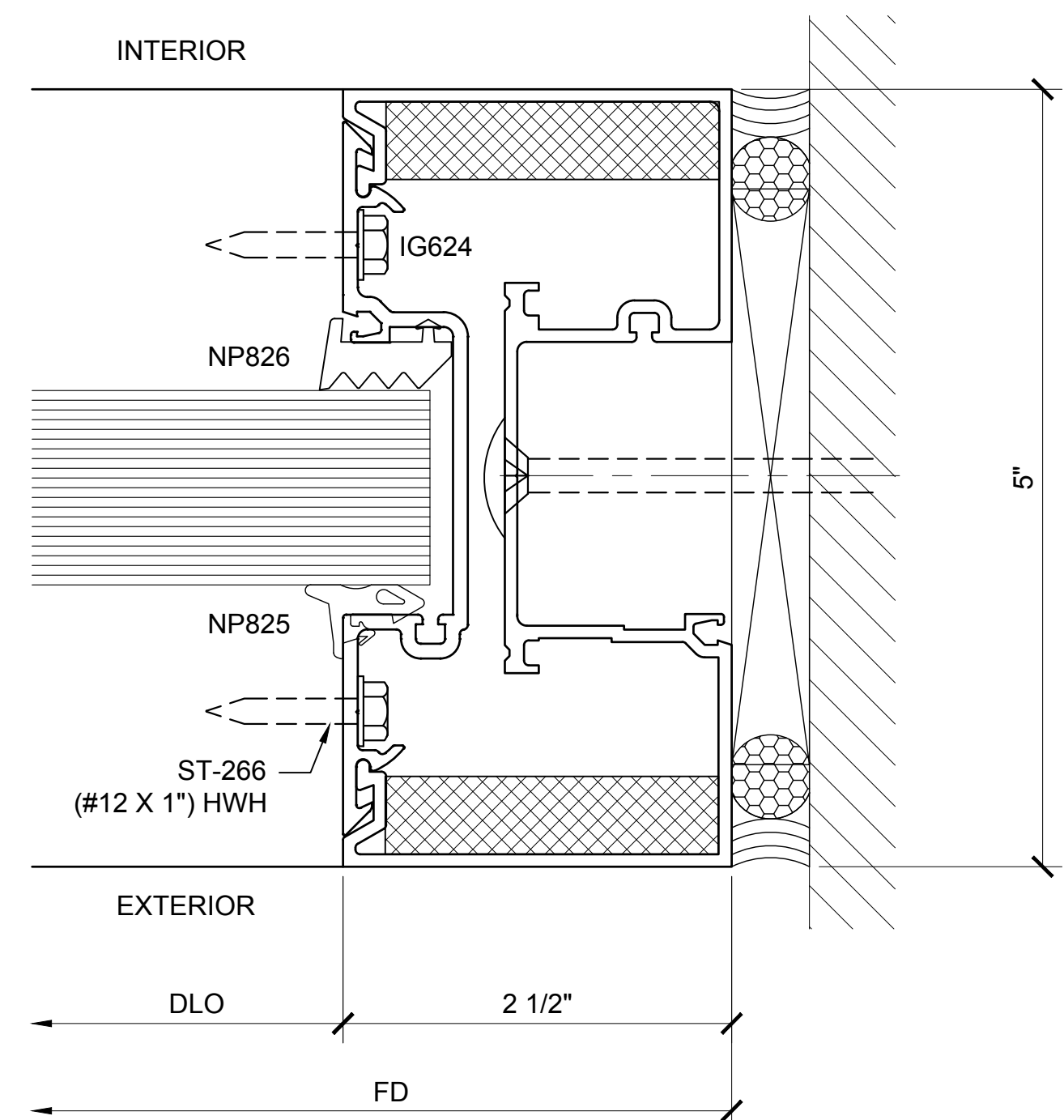
13 SECTION DETAIL AT JAMB
ARCH REF: NONE 1'-0"=1'-0"



14 SECTION DETAIL AT INTERMEDIATE MULLION
ARCH REF: NONE 1'-0"=1'-0"



15 SECTION DETAIL AT JAMB
ARCH REF: NONE 1'-0"=1'-0"



16 SECTION DETAIL AT INTERMEDIATE JAMB
ARCH REF: NONE 1'-0"=1'-0"

Revisions By:

CRL
ALUMINUM
C.R. LAURENCE CO. ARCHITECTURAL PRODUCTS
2503 E. Vernon Avenue, Los Angeles, CA 90058-1897
PH (800) 421-6144 FX 800-587-7301 www.crlaurence.com

Discription:
CRL BULLET RESISTANT SERIES
ALUMINUM BULLET
RESISTANT DOORS
FOR 1-1/4" & 1-3/16" GLASS

Drawn By: TG
Date: 08/15/17
Scale: AS NOTED
File Name:
AluminumBulletResistantDoor.cpm

Sheet