

CRL BI-FOLD DOORS

Door Installation Manual

Full panel overhead track system

IMPORTANT: PLEASE READ BEFORE INSTALLATION
The following instructions will reduce your chances of experiencing problems during installation, and ensure smooth, trouble-free operation of the product

CONTENTS

Introduction	page 2
Configurations	page 3
Head Installation	page 4
Bottom Track and Pivot installation	page 4
Door Assembly (Pivot Rails)	page 5
Door Assembly (Slider Rails)	page 6
Pivot Door Leaf Installation	page 7
Sliding Door Leaf Installation	page 8
Final Assembly	page 9

Introduction

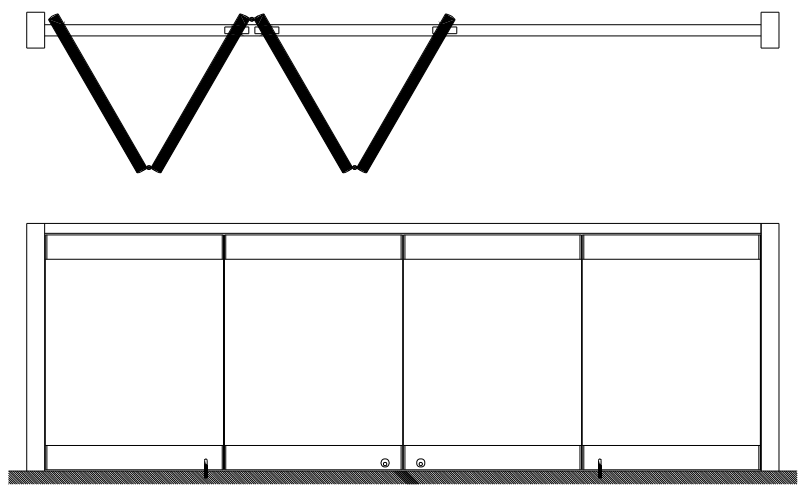
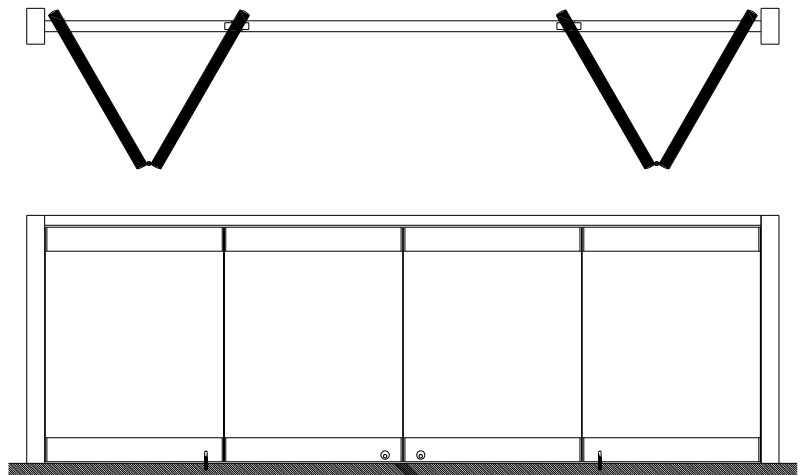
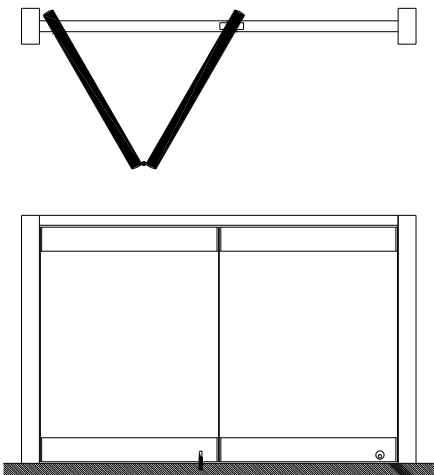
Congratulations on your selection of the CRL Bi-Fold Door System. This system has been designed to work in a variety of different applications. Ease of installation and adjustment for height and alignment by incorporating all the features of the CRL Wedge-Lock Door Rail System make this the best choice you can make in Overhead Track Doors.

By following the instructions in this manual, we believe you will experience a trouble free installation of the system.

Should you have any question about this system or any other CRL products, please contact us at (800) 421-6144 or visit our website at www.crlaurence.com.

Configurations

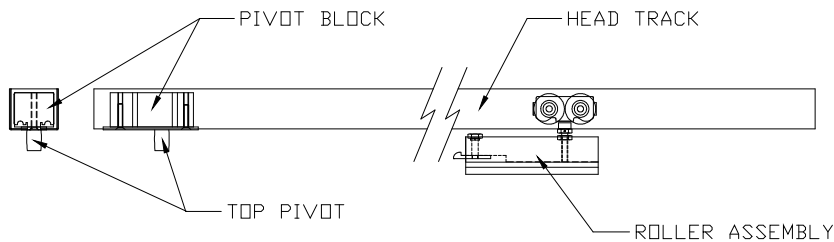
Styles can be 2 panel Bi-Fold, 4 Panel Dual Bi-Fold or 4 Panel Single Side Fold. The maximum width of each panel must not exceed 39" (990mm). Minimum panel width is 15" (381mm) Maximum weight per panel not to exceed 170 lbs. (77kg).



Be sure to re-Install the Roller Assemblies prior to securing the Pivot Block

Head Track Installation

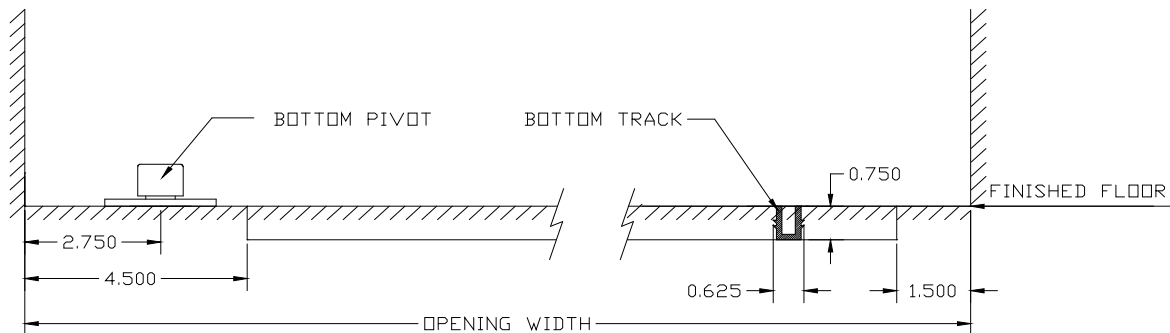
The Head Track assembly is packed complete with Top Pivot, Pivot Block and Roller Assemblies installed. Remove the Top Pivot/s from the Pivot Block/s. This will expose the temporary screws holding the Pivot Blocks to the Head Track. Remove these screws and discard them. Remove the Roller Assemblies. Secure the Head Track onto the top opening with #10 screws (not provided) through the holes provided. Re-install the Roller Assemblies, and then secure the Top Pivot Block to the Head with 1/4" screws (not provided). Screw lengths should be a minimum of 1" long and the head of the opening must be of sufficient strength to withstand considerable torque from the top hung panels when they are open.



Bottom Track and Pivot Installation

The Bottom Track is set into the floor and is positioned directly under the center of the Head Track. It should be positioned 4 1/2" from the Pivot jamb and 1 1/2" from the opposite jamb.

The Bottom Pivot is installed into the finished floor 2 3/4" from the Pivot Jamb and on the centerline of the door.



Door Leaf Assembly

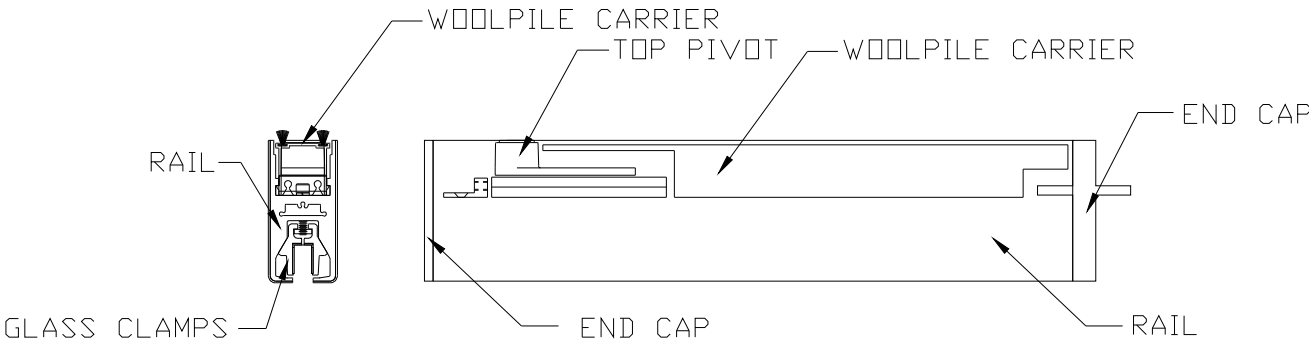
PIVOT TOP RAIL

Remove both End Caps from the Rail. Remove the Woolpile Carrier from the Rail. Assemble the Rail to the Glass as directed in the Rail Assembly Instructions included in the packaging. Re-install the Woolpile Carrier.

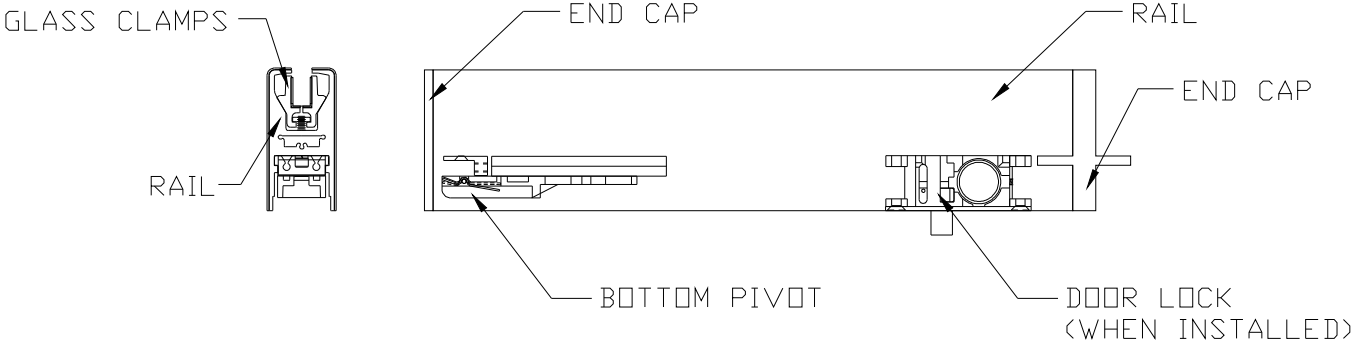
PIVOT BOTTOM RAIL

Remove both End Caps from the Rail. Assemble the Rail to the Glass as directed in the Rail Assembly Instructions included in the packaging. **Be sure that the Bottom Pivot is aligned with the Top Pivot in the Top Rail.**

TOP PIVOT RAIL



BOTTOM PIVOT RAIL



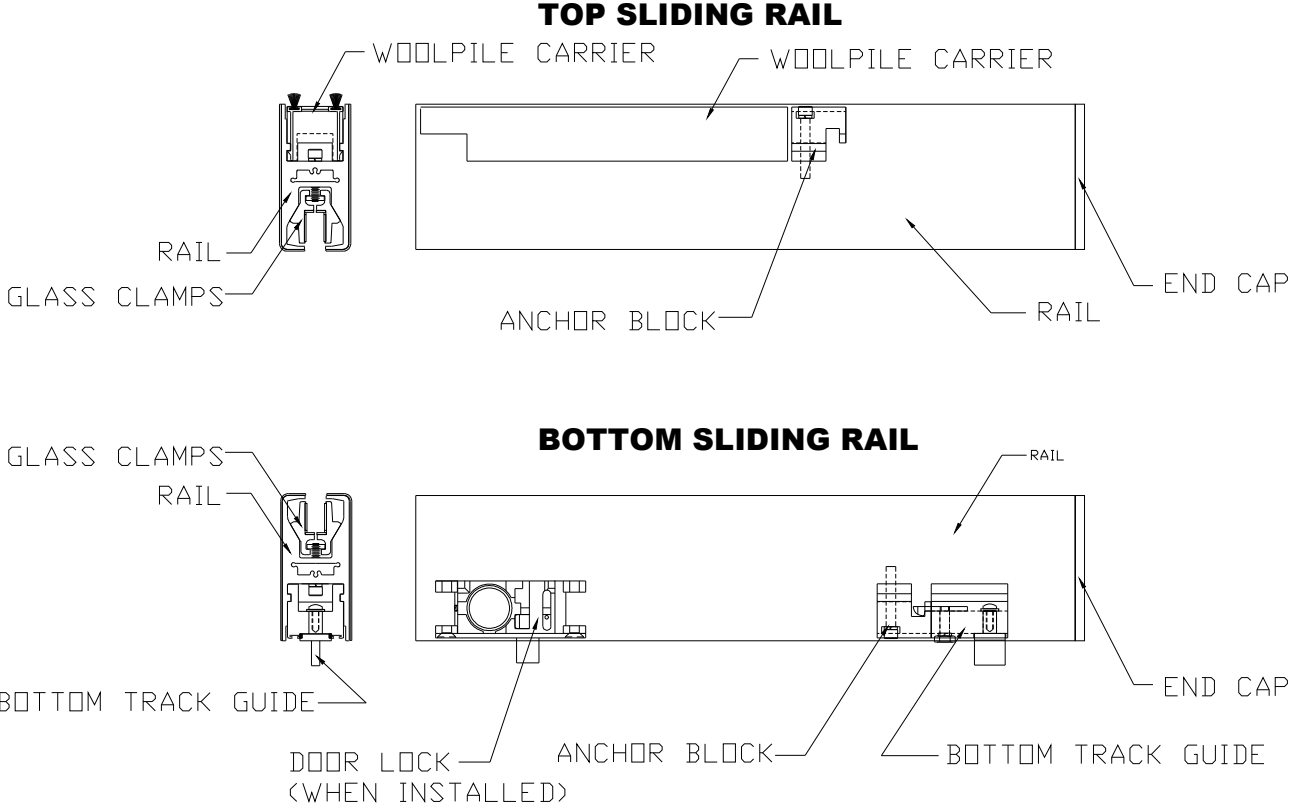
Door Leaf Assembly

SLIDER TOP RAIL

Remove End Caps from the Rail. Remove the Woolpile Carrier from the Rail. Assemble the Rail to the Glass as directed in the Rail Assembly Instructions included in the packaging. Re-install the Woolpile Carrier.

SLIDER BOTTOM RAIL

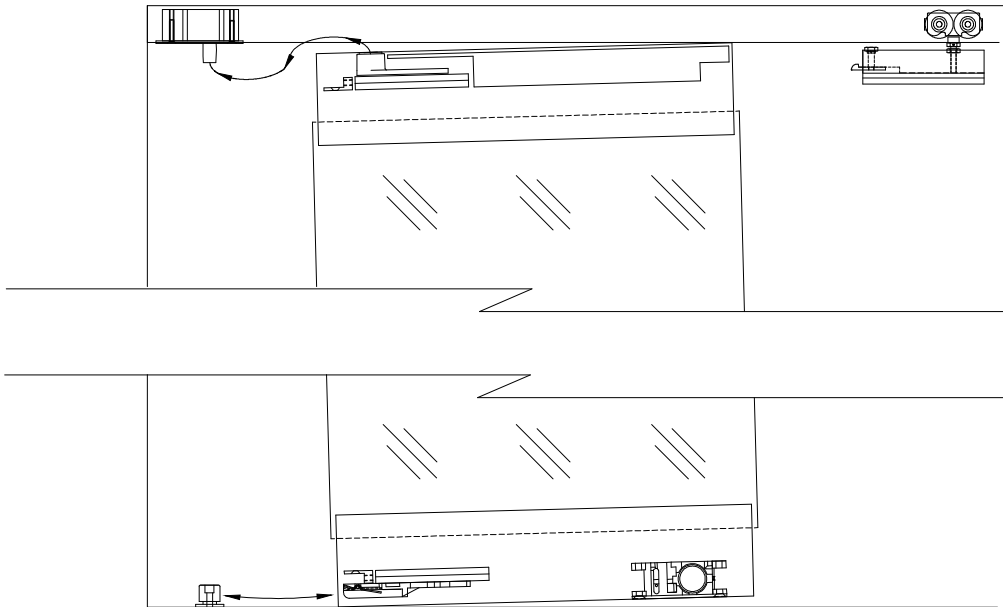
Remove End Caps from the Rail. Assemble the Rail to the Glass as directed in the Rail Assembly Instructions included in the packaging. **Be sure that the Bottom Track Guide is aligned with the Anchor Block in the Top Rail.**



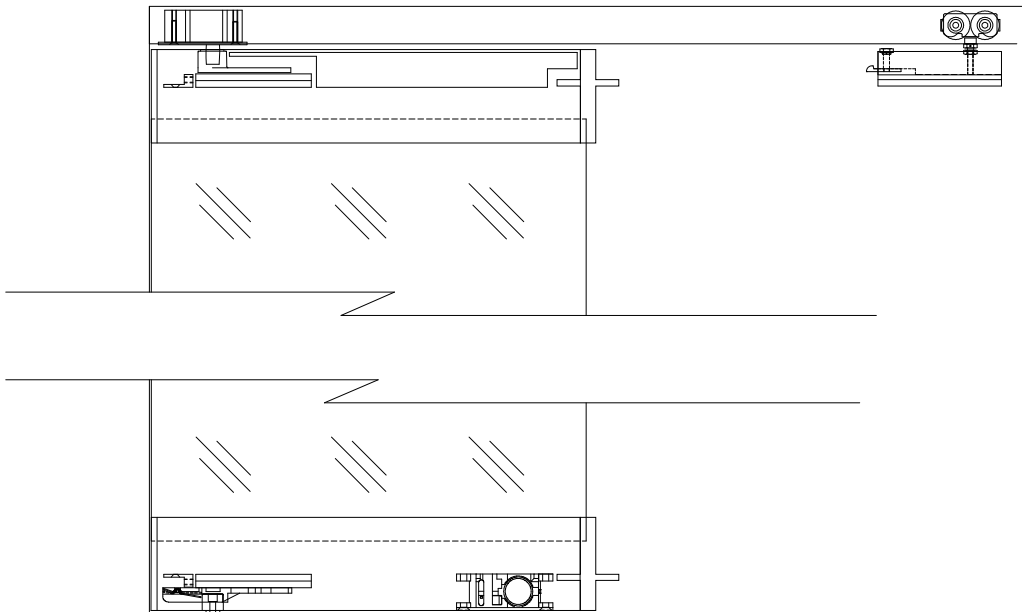
Be sure top and bottom pivots are in the correct position and are secure

Pivot Door Leaf Installation

Lift Door Leaf, and insert the Pivot Receiver in the Door into the Top Pivot.
 Raise the Door Leaf and slide it onto the Bottom Pivot.

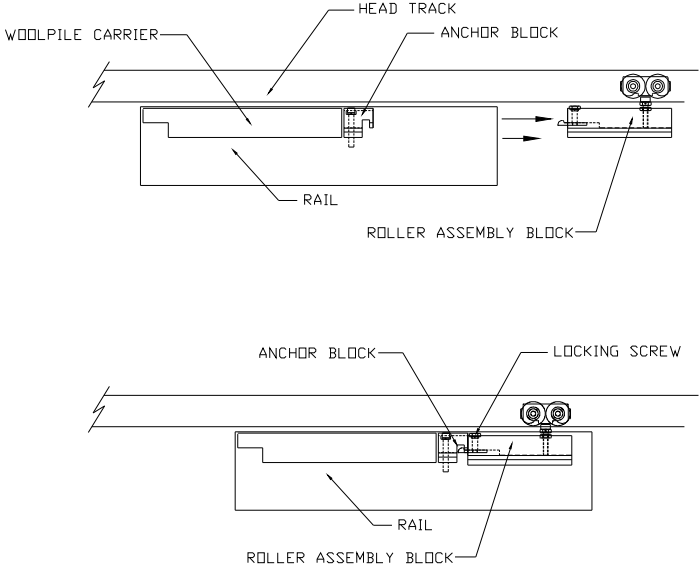


Check alignment of with Head and Jamb. If adjustment is required, follow procedures in Rail Assembly Instructions. When Leaf is aligned correctly, re-install End Caps.

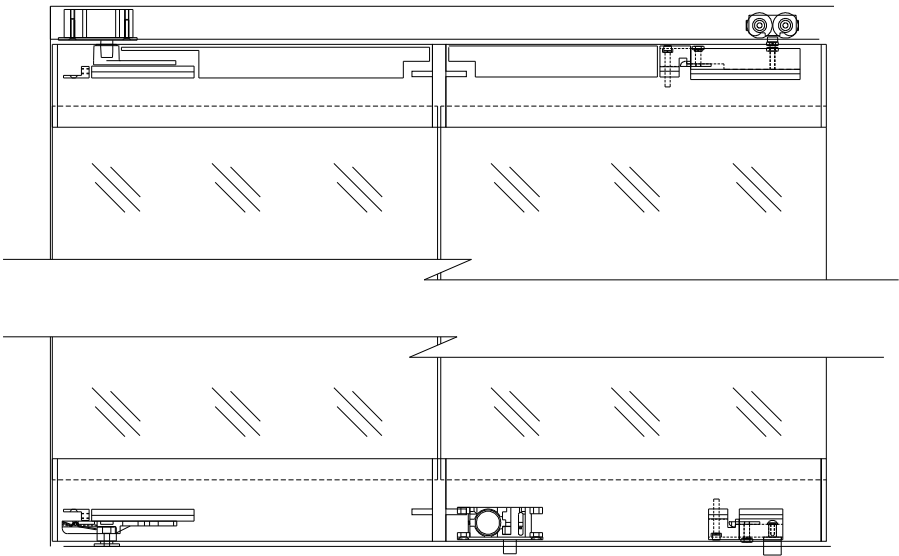


Sliding Door Leaf Installation

Lift Sliding Door Leaf and insert Bottom Track Guide into Bottom Track. Align the end of the Top Rail with the Roller Assembly Block. Slide the Roller Assembly Block into the Top Rail until it contacts with the Anchor Block. While maintaining contact, tighten the locking screw.

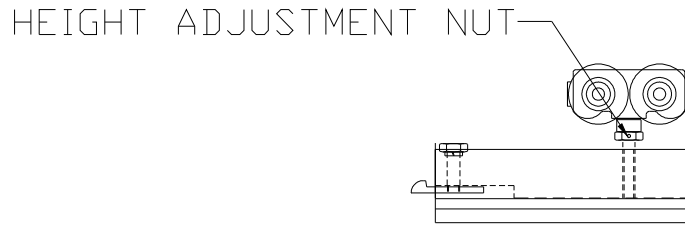


Secure the Hinged End Caps attached to the Pivot Door Leaf to the Sliding Door Leaf. Be sure screws are tight. Continue process until all Sliding Door Leaves are installed.



Sliding Door Leaf Installation (cont.)

If height adjustment is required, rotate Adjustment Nut.



Final Assembly

Check operation of Door. If Binding is observed when door nears full open position, do not force. This will be due to mis-alignment of the Top or Bottom Pivot. Release the hinged end cap screws by a few turns and fully open the door. Any mis-alignment of the Pivots will show as a gap between the Hinge and the Door Rail. Adjust the Slides at the Pivot end of the Rail to bring the Rails in line with the Hinge and re-tighten the Hinge screws. Make any final adjustments to height and alignment. Install Lock cylinders and any other hardware and check function.