

ENTRANCE AND STOREFRONT SYSTEMS

SERIES E1200 ELEPHANT DOORS

SLIDING STOREFRONT SYSTEM WITH SWING DOORS

Allows Maximum Unobstructed Opening, Large Enough for an Elephant!



- Incorporates Our Series 400 Medium Stile Aluminum Doors
- For 1/4" or 1" (6 or 25 mm) Glazing
- Up to 6' (1.8 m) Wide x 14' (4.2 m) Tall Operable Bays
- Available in Clear, Dark Bronze, or Black Anodized Finishes
- Also Available in Standard U.S. Aluminum Fluoropolymer Painted Finishes
- Optional Automatic Operators on Swing Doors

The E1200 Elephant Doors are the first of their kind! They are suitable for up to 6' (1.8 m) wide x 14' (4.2 m) tall bays, and can meet code requirements with 30 psf windloads. With the rugged overall construction, coupled with heavy wall stiles and interlocks, heavy-duty tandem rollers, and a concealed floor track, they offer smooth operation and durability. Available in clear, bronze or black anodized and a wide range of standard U.S. Aluminum Fluoropolymer painted finishes. Doors are available in offset pivot or center hung configurations with a wide variety of locking hardware and overhead concealed closers to meet your specific requirements.

The Elephant Door System is ideal for renovation projects as no wall pockets are needed to facilitate the horizontal movement of the system. The operable storefront sections easily slide behind the fixed sections, creating monumental openings for the passage of large items such as cars, trucks, boats, works of art, furniture, or mass pedestrian traffic for sporting venues.

APPLICATIONS:

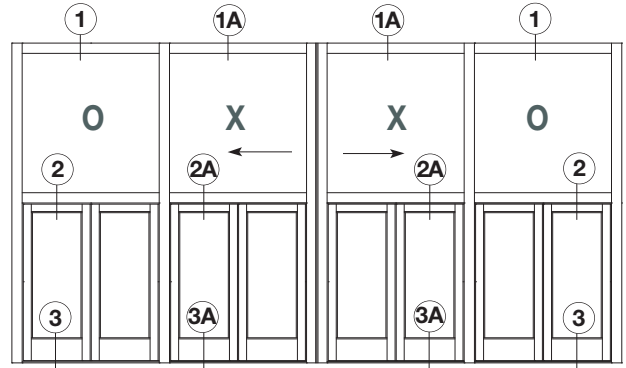
- Mall Fronts
- Convention Centers
- Car, Truck, and Boat Dealerships
- Museums
- Sports Venues
- Performing Arts Facilities

CRL
U.S. ALUMINUM
usalum.com • crlaurence.com
crl-arch.com

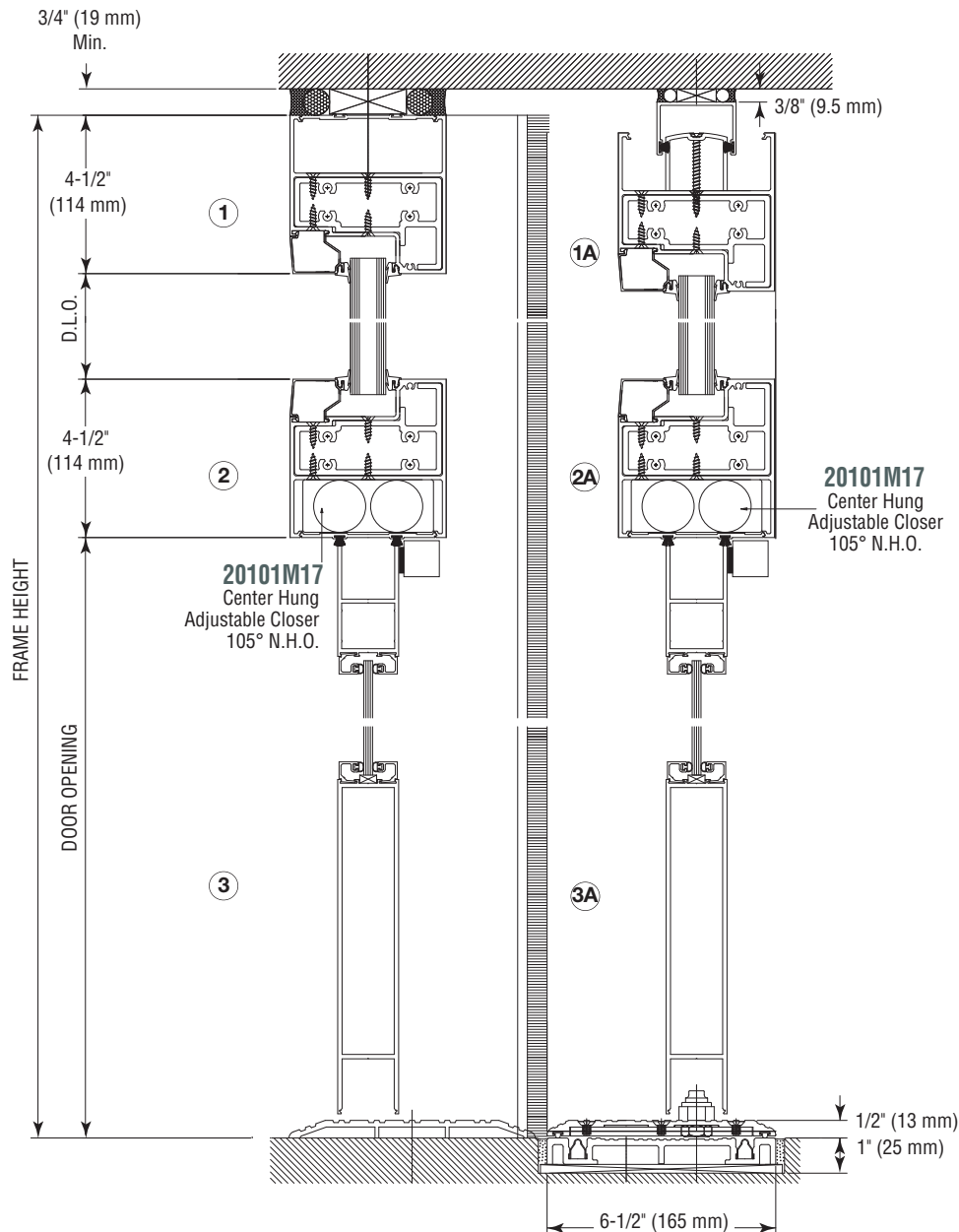
SERIES E1200 ELEPHANT DOORS

TYPICAL DETAILS

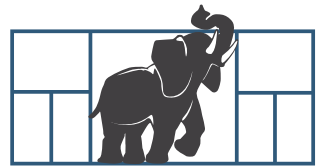
The **U.S. Aluminum Elephant Door System** is ideal for renovation projects as no wall pockets are needed to facilitate the horizontal movement of the system. The operable storefront sections easily slide behind the fixed sections, creating monumental openings for the passage of large items such as cars, trucks, boats, works of art, furniture, or mass pedestrian traffic for sporting venues. Various configurations are available to meet your design needs. The **E1200** is intended for installations that have soffit overhangs greater than the overall entrance frame height. Local codes should be checked for compliance.



TYPICAL ELEVATION



CENTER HUNG DOORS



CRL-U.S. ALUMINUM
ELEPHANT
DOORS

For Specifications,
Details, and Testing
Data go to
usalum.com.

20101M17
Center Hung
Adjustable Closer
105° N.H.O.

NOT TO SCALE

AVDB4189_4/15